

Datasheet for ABIN6698827

Rabbit anti-Chicken IgG Antibody (DyLight 800)[Go to Product page](#)**1** Image

Overview

| | |
|--------------|---|
| Quantity: | 100 µg |
| Target: | IgG |
| Reactivity: | Chicken |
| Host: | Rabbit |
| Clonality: | Polyclonal |
| Conjugate: | DyLight 800 |
| Application: | Western Blotting (WB), FLISA, Fluorescence Microscopy (FM), Dot Blot (DB) |

Product Details

| | |
|------------------|---|
| Purpose: | Chicken IgG (H&L) Antibody DyLight™ 800 Conjugated |
| Immunogen: | Chicken IgG, whole molecule |
| Isotype: | IgG |
| Characteristics: | rabbit anti-Chicken IgG Antibody DyLight™ 800 Conjugation, rabbit anti-Chicken IgY DyLight™ 800 Conjugated Antibody, Anti-Chicken IgG DyLight Antibody generated in rabbit detects chicken IgY. |
| Labeling Ratio: | 2.3 |

Target Details

| | |
|-----------|------------------------------|
| Target: | IgG |
| Abstract: | IgG Products |

Target Details

| | |
|--------------|---|
| Target Type: | Antibody |
| Background: | Secreted as part of the adaptive immune response by plasma B cells, immunoglobulin G constitutes 75 % of serum immunoglobulins. Immunoglobulin G binds to viruses, bacteria, as well as fungi and facilitates their destruction or neutralization via agglutination (and thereby immobilizing them), activation of the compliment cascade, and opsonization for phagocytosis. The whole IgG molecule possesses both the F(c) region, recognized by high-affinity Fc receptor proteins, as well as the F(ab) region possessing the epitope-recognition site. Both heavy and light chains of the antibody molecule are present. |

Application Details

| | |
|--------------------|---|
| Application Notes: | FLISA_Dilution: >1:20,000 IF_Microscopy_Dilution: >1:5,000 Western_Blot_Dilution: >1:10,000 Other: User Optimized |
| Comment: | Anti-Chicken IgG DyLight800 has been tested by dot blot. This product is designed for immunofluorescence microscopy, fluorescence based plate assays (FLISA) and fluorescent western blotting. This product is also suitable for multiplex analysis, including multicolor imaging, utilizing various commercial platforms. The emission spectra for this DyLight™ conjugate match the principle output wavelengths of most common fluorescence instrumentation. |
| Restrictions: | For Research Use only |

Handling

| | |
|--------------------|---|
| Format: | Lyophilized |
| Reconstitution: | Reconstitution Volume: 100 µL Reconstitution Buffer: Restore with deionized water (or equivalent) |
| Concentration: | 1.0 mg/mL |
| Buffer: | 0.02 M Potassium Phosphate, 0.15 M Sodium Chloride, pH 7.2, 10 mg/mL Bovine Serum Albumin (BSA) - Immunoglobulin and Protease free, 0.01 % (w/v) Sodium Azide |
| Preservative: | Sodium azide |
| Precaution of Use: | This product contains Sodium azide: a POISONOUS AND HAZARDOUS SUBSTANCE which should be handled by trained staff only. |

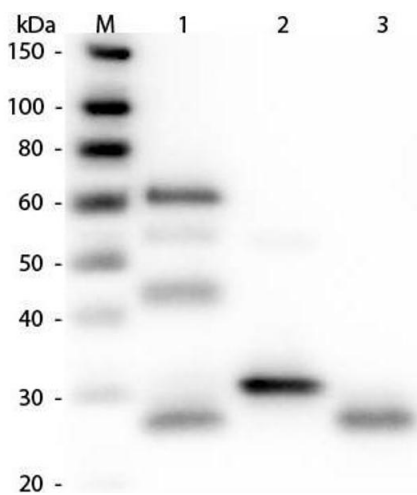
Handling

Storage: 4 °C,-20 °C

Storage Comment: Store conjugated secondary antibody at 4° C prior to restoration. For extended storage aliquot contents and freeze at -20° C or below. Avoid cycles of freezing and thawing. Centrifuge product if not completely clear after standing at room temperature. Conjugated Secondary Antibody is stable for several weeks at 4° C as an undiluted liquid. Dilute only prior to immediate use.

Expiry Date: 12 months

Images



Western Blotting

Image 1. Western Blot of Anti-Chicken IgG (H&L) (RABBIT) Antibody. Lane M: 3 µl Molecular Ladder. Lane 1: Chicken IgG whole molecule. Lane 2: Chicken IgG F(c) Fragment. Lane 3: Chicken IgG Fab Fragment. All samples were reduced. Load: 50 ng per lane. Block: ABIN925618 for 30 min at RT. Primary Antibody: Anti-Chicken IgG (H&L) (RABBIT) Antibody 1:3,000 for 60 min at RT. Secondary antibody: Anti-Rabbit IgG (GOAT) Peroxidase Conjugated Antibody 1:40,000 in ABIN925618 for 30 min at RT. Predicted/Observed Size: 25 and 72 kDa for Chicken IgG, 25 kDa for F(c) and Fab. Chicken F(c) migrates slightly higher.