

Datasheet for ABIN6698843

Donkey anti-Goat IgG Antibody (Cy3) - Preadsorbed[Go to Product page](#)**1** Image**2** Publications

Overview

Quantity:	1 mg
Target:	IgG
Reactivity:	Goat
Host:	Donkey
Clonality:	Polyclonal
Conjugate:	Cy3
Application:	Western Blotting (WB), Flow Cytometry (FACS), FLISA, Fluorescence Microscopy (FM), Dot Blot (DB)

Product Details

Purpose:	Goat IgG (H&L) Antibody CY3 Conjugated Pre-Adsorbed
Immunogen:	Goat IgG whole molecule
Isotype:	IgG
Cross-Reactivity (Details):	Minimal crossreactivity against Ch GP Ham Hs Ms Rb & Rt Serum Proteins
Characteristics:	donkey anti-Goat IgG CY3 Conjugated Pre-Adsorbed Antibody, Anti-Goat IgG Cy3 Antibody generated in donkey detects goat IgG.
Purification:	Preadsorption: Pre-Adsorbed
Labeling Ratio:	8.1

Target Details

Target: IgG

Abstract: [IgG Products](#)

Target Type: Antibody

Background: Secreted as part of the adaptive immune response by plasma B cells, immunoglobulin G constitutes 75 % of serum immunoglobulins. Immunoglobulin G binds to viruses, bacteria, as well as fungi and facilitates their destruction or neutralization via agglutination (and thereby immobilizing them), activation of the complement cascade, and opsonization for phagocytosis. The whole IgG molecule possesses both the F(c) region, recognized by high-affinity Fc receptor proteins, as well as the F(ab) region possessing the epitope-recognition site. Both heavy and light chains of the antibody molecule are present. Secondary Antibodies are available in a variety of formats and conjugate types. When choosing a secondary antibody product, consideration must be given to species and immunoglobulin specificity, conjugate type, fragment and chain specificity, level of cross-reactivity, and host-species source and fragment composition.

Application Details

Application Notes: FLISA_Dilution: 1:10,000 - 1:50,000
Flow_Cytometry_Dilution: 1:500 - 1:2,500
IF_Microscopy_Dilution: 1:1,000 - 1:5,000
Other: FLOW CYTOMETRY 1:500 - 1:2,500

Comment: Goat IgG (H&L) Antibody CY3 Conjugated Pre-Adsorbed antibody has been tested by dot blot and western blot. These antibodies are designed for immunofluorescence microscopy, fluorescence based plate assays (FLISA) and fluorescent western blotting. This product is also suitable for multiplex analysis, including multicolor imaging, utilizing various commercial platforms. Suitable for immunomicroscopy and flow cytometry or FACS analysis as well as other antibody based fluorescent assays requiring lot-to-lot consistency.
Suggested Applications: IHC, Multiplex, Other

Restrictions: For Research Use only

Handling

Format: Lyophilized

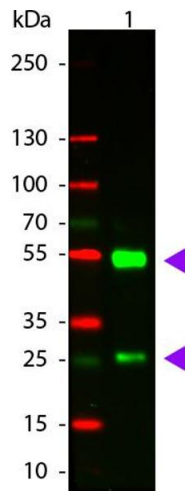
Reconstitution: Reconstitution Volume: 1.0 mL
Reconstitution Buffer: Restore with deionized water (or equivalent)

Handling

Concentration:	1.0 mg/mL
Buffer:	0.02 M Potassium Phosphate, 0.15 M Sodium Chloride, pH 7.2, 10 mg/mL Bovine Serum Albumin (BSA) - Immunoglobulin and Protease free, 0.01 % (w/v) Sodium Azide
Preservative:	Sodium azide
Precaution of Use:	This product contains Sodium azide: a POISONOUS AND HAZARDOUS SUBSTANCE which should be handled by trained staff only.
Storage:	4 °C,-20 °C
Storage Comment:	Store conjugated secondary antibody at 4° C prior to restoration. For extended storage aliquot contents and freeze at -20° C or below. Avoid cycles of freezing and thawing. Centrifuge product if not completely clear after standing at room temperature. Conjugated Secondary Antibody is stable for several weeks at 4° C as an undiluted liquid. Dilute only prior to immediate use.
Expiry Date:	12 months

Publications

Product cited in:	<p>Masuda-Murakami, Kobayashi, Wang, Yamada, Kimura, Hossain, Matsumoto: "Effects of mineral trioxide aggregate on the differentiation of rat dental pulp cells." in: Acta histochemica, Vol. 112, Issue 5, pp. 452-8, (2011) (PubMed).</p> <p>Jain, Liu, Ramani, Arauz, Ishitsuka, Ragunathan, Park, Chen, Xiang, Ha: "Probing cellular protein complexes using single-molecule pull-down." in: Nature, Vol. 473, Issue 7348, pp. 484-8, (2011) (PubMed).</p>
-------------------	--



Western Blotting

Image 1. WB - Goat IgG (H&L) Antibody CY3 Conjugated Pre-Adsorbed Western Blot of Donkey anti-Goat IgG Cy3 Conjugated Antibody. Lane 1: Goat IgG. Lane 2: None. Load: 50 ng per lane. Primary antibody: None. Secondary antibody: Cy3 donkey secondary antibody at 1:1,000 for 60 min at RT. Block: ABIN925618 for 30 min at RT. Predicted/Observed size: 28 & 55 kDa, 28 & 55 kDa for Goat IgG. Other band(s): None