

Datasheet for ABIN6698844

Donkey anti-Goat IgG Antibody (Cy3.5) - Preadsorbed[1 Image](#)[1 Publication](#)[Go to Product page](#)

Overview

Quantity:	1 mg
Target:	IgG
Reactivity:	Goat
Host:	Donkey
Clonality:	Polyclonal
Conjugate:	Cy3.5
Application:	Flow Cytometry (FACS), FLISA, Fluorescence Microscopy (FM), Dot Blot (DB)

Product Details

Purpose:	Goat IgG (H&L) Antibody CY3.5 Conjugated Pre-Adsorbed
Immunogen:	Goat IgG whole molecule
Isotype:	IgG
Cross-Reactivity (Details):	Minimal crossreactivity against Ch GP Ham Hs Ms Rb & Rt Serum Proteins
Characteristics:	donkey anti-Goat IgG CY3.5 Conjugated Pre-Adsorbed Antibody, Anti-Goat IgG Cy3.5 Antibody generated in donkey detects goat IgG.
Purification:	Preadsorption: Pre-Adsorbed
Labeling Ratio:	6.6

Target Details

Target:	IgG
---------	-----

Target Details

Abstract: [IgG Products](#)

Target Type: Antibody

Background: Secreted as part of the adaptive immune response by plasma B cells, immunoglobulin G constitutes 75 % of serum immunoglobulins. Immunoglobulin G binds to viruses, bacteria, as well as fungi and facilitates their destruction or neutralization via agglutination (and thereby immobilizing them), activation of the complement cascade, and opsonization for phagocytosis. The whole IgG molecule possesses both the F(c) region, recognized by high-affinity Fc receptor proteins, as well as the F(ab) region possessing the epitope-recognition site. Both heavy and light chains of the antibody molecule are present. Secondary Antibodies are available in a variety of formats and conjugate types. When choosing a secondary antibody product, consideration must be given to species and immunoglobulin specificity, conjugate type, fragment and chain specificity, level of cross-reactivity, and host-species source and fragment composition.

Application Details

Application Notes: FLISA_Dilution: 1:10,000 - 1:50,000
Flow_Cytometry_Dilution: 1:500 - 1:2,500
IF_Microscopy_Dilution: 1:1,000 - 1:5,000
Other: FLOW CYTOMETRY 1:500 - 1:2,500

Comment: Anti-Goat IgG Cy3.5 Antibody has been tested by dot blot. This product is designed for immunofluorescence microscopy, fluorescence based plate assays (FLISA) and fluorescent western blotting. This product is also suitable for multiplex analysis, including multicolor imaging, utilizing various commercial platforms.
Suggested Applications: IF, Multiplex, Other

Restrictions: For Research Use only

Handling

Format: Lyophilized

Reconstitution: Reconstitution Volume: 1.0 mL
Reconstitution Buffer: Restore with deionized water (or equivalent)

Concentration: 1.0 mg/mL

Buffer: 0.02 M Potassium Phosphate, 0.15 M Sodium Chloride, pH 7.2, 10 mg/mL Bovine Serum

Handling

Albumin (BSA) - Immunoglobulin and Protease free, 0.01 % (w/v) Sodium Azide

Preservative: Sodium azide

Precaution of Use: This product contains Sodium azide: a POISONOUS AND HAZARDOUS SUBSTANCE which should be handled by trained staff only.

Storage: 4 °C, -20 °C

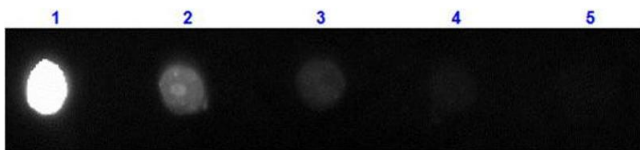
Storage Comment: Store conjugated secondary antibody at 4° C prior to restoration. For extended storage aliquot contents and freeze at -20° C or below. Avoid cycles of freezing and thawing. Centrifuge product if not completely clear after standing at room temperature. Conjugated Secondary Antibody is stable for several weeks at 4° C as an undiluted liquid. Dilute only prior to immediate use.

Expiry Date: 12 months

Publications

Product cited in: Osanai, Takahashi, Nakamura, Takahashi, Ishigaki, Sakuma, Toga, Suzuki, Voelker: "Expression and characterization of Rab38, a new member of the Rab small G protein family." in: **Biological chemistry**, Vol. 386, Issue 2, pp. 143-53, (2005) ([PubMed](#)).

Images



Dot Blot

Image 1. Dot Blot of Anti-Goat IgG Antibody CY3.5 Conjugated. Dot Blot results of Donkey Anti-Goat IgG Antibody CY3.5 Conjugated. Dots are Goat IgG at (1) 100ng, (2) 33.3ng, (3) 11.1ng, (4) 3.70ng, (5) 1.23ng. Blocking: ABIN925618 for 30 min at RT. Primary Antibody: Donkey Anti-Goat IgG Antibody CY3.5 at 1µg/mL for 1hr at RT. Secondary Antibody: none. Imaged with BioRad ChemiDoc, DL549 filter.