

Datasheet for ABIN6698967

Rabbit anti-Monkey IgG Antibody (DyLight 488) - Preadsorbed[Go to Product page](#)**1** Image

Overview

| | |
|--------------|--|
| Quantity: | 100 µg |
| Target: | IgG |
| Reactivity: | Monkey |
| Host: | Rabbit |
| Clonality: | Polyclonal |
| Conjugate: | DyLight 488 |
| Application: | Western Blotting (WB), FLISA, Fluorescence Microscopy (FM) |

Product Details

| | |
|------------------|---|
| Immunogen: | Immunogen: Anti-Monkey IgG (H&L) was produced by repeated immunization with monkey IgG in rabbit. Immunogen Type: Native Protein |
| Isotype: | IgG |
| Characteristics: | Synonyms: rabbit anti-Monkey IgG DyLight™ 488 conjugated antibody, rabbit anti-Monkey IgG antibody DyLight™ 488 conjugation Background: Conjugated Anti-Monkey IgG (H&L) DyLight™ 488 antibody generated in rabbit detects specifically monkey IgG heavy and light chains. Secreted as part of the adaptive immune response by plasma B cells, immunoglobulin G constitutes 75 % of serum immunoglobulins. IgG binds to viruses, bacteria, as well as fungi and facilitates their destruction or neutralization via agglutination (and thereby immobilizing them), activation of the compliment cascade, and opsinization for phagocytosis. The whole IgG molecule possesses both the F(c) region, recognized by high-affinity Fc receptor proteins, as well as the F(ab) region |

Product Details

possessing the epitope-recognition site. Both heavy and light chains of the antibody molecule are present. This DyLight™ 488 conjugated anti-Monkey IgG (H&L) secondary antibody is ideal for investigators who routinely perform immunofluorescence, flow cytometry, and more general immunoassays. When choosing a secondary antibody product, consideration must be given to species and immunoglobulin specificity, conjugate type, fragment and chain specificity, level of cross-reactivity, and host-species source and fragment. The emission spectra for this DyLight™ conjugate match the principle output wavelengths of most common fluorescence instrumentation.

| | |
|-----------------|--|
| Purification: | Preadsorption: immunoaffinity chromatography using Monkey IgG coupled to agarose beads |
| Labeling Ratio: | 4.8 |

Target Details

| | |
|--------------|------------------------------|
| Target: | IgG |
| Abstract: | IgG Products |
| Target Type: | Antibody |

Application Details

| | |
|--------------------|--|
| Application Notes: | <p>Application Note: Anti-Monkey IgG (H&L) DyLight™ 488 conjugated Antibody is suitable for use in immunofluorescence microscopy, fluorescence based plate assays (FLISA) and fluorescent western blotting. This product is also suitable for multiplex analysis, including multicolor imaging, utilizing various commercial platforms. Specific conditions for reactivity and signal detection should be optimized by the end user.</p> <p>FLISA Dilution: >1:10,000</p> <p>Western Blot Dilution: >1:10,000</p> <p>IF Microscopy Dilution: >1:5,000</p> |
|--------------------|--|

| | |
|---------------|-----------------------|
| Restrictions: | For Research Use only |
|---------------|-----------------------|

Handling

| | |
|-----------------|--|
| Format: | Lyophilized |
| Reconstitution: | Reconstitution Volume: 100 µL Reconstitution Buffer: Restore with deionized water (or equivalent) |
| Buffer: | Buffer: 0.02 M Potassium Phosphate, 0.15 M Sodium Chloride, pH 7.2 |

Handling

Stabilizer: 10 mg/mL Bovine Serum Albumin (BSA) - Immunoglobulin and Protease free
0.01 % (w/v) Sodium Azide

Preservative: Sodium azide

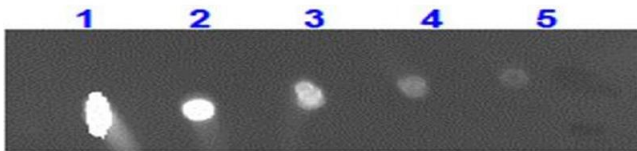
Precaution of Use: This product contains Sodium azide: a POISONOUS AND HAZARDOUS SUBSTANCE which should be handled by trained staff only.

Storage: RT, 4 °C, -20 °C

Storage Comment: Store secondary antibody at 4° C prior to restoration. For extended storage aliquot antibody and freeze at -20° C or below. Avoid cycles of freezing and thawing. Centrifuge product if not completely clear after standing at room temperature. This product is stable for several weeks at 4° C as an undiluted liquid. Dilute only prior to immediate use.

Expiry Date: 12 months

Images



Dot Blot

Image 1. Dot Blot for Rabbit Anti-MONKEY IgG 488 Conjugation Dot Blot for Rabbit Anti-MONKEY IgG 488 Conjugation. Lane 1: 100 ng Monkey IgG. Lanes 2-5: serial dilution 3 fold of Antigen. Primary Antibody: none. Secondary Antibody: Rabbit Anti-Monkey IgG 488 Conjugation at 1 µg/ml at RT for 1 hour. Block: ABIN925618 at RT for 30 minutes.