

Datasheet for ABIN6698968

**Rabbit anti-Monkey IgG Antibody (DyLight 680) - Preadsorbed**[Go to Product page](#)**1** Image

## Overview

Quantity:	100 µg
Target:	IgG
Reactivity:	Monkey
Host:	Rabbit
Clonality:	Polyclonal
Conjugate:	DyLight 680
Application:	Western Blotting (WB), FLISA, Fluorescence Microscopy (FM)

## Product Details

Immunogen:	Immunogen: Anti-Monkey IgG (H&L) was produced by repeated immunization with monkey IgG in rabbit. Immunogen Type: Native Protein
Isotype:	IgG
Characteristics:	Synonyms: rabbit anti-Monkey IgG DyLight™ 680 conjugated antibody, rabbit anti-Monkey IgG antibody DyLight™ 680 conjugation Background: Conjugated Anti-Monkey IgG (H&L) DyLight™ 680 Conjugated antibody generated in rabbit detects specifically monkey IgG heavy and light chains. Secreted as part of the adaptive immune response by plasma B cells, immunoglobulin G constitutes 75 % of serum immunoglobulins. IgG binds to viruses, bacteria, as well as fungi and facilitates their destruction or neutralization via agglutination (and thereby immobilizing them), activation of the compliment cascade, and opsinization for phagocytosis. The whole IgG molecule possesses both the F(c) region, recognized by high-affinity Fc receptor proteins, as well as the F(ab) region

## Product Details

---

possessing the epitope-recognition site. Both heavy and light chains of the antibody molecule are present. This DyLight™680 conjugated anti-Monkey IgG (H&L) secondary antibody is ideal for investigators who routinely perform immunofluorescence, flow cytometry, and more general immunoassays. When choosing a secondary antibody product, consideration must be given to species and immunoglobulin specificity, conjugate type, fragment and chain specificity, level of cross-reactivity, and host-species source and fragment. The emission spectra for this DyLight™ conjugate match the principle output wavelengths of most common fluorescence instrumentation.

Purification:	Preadsorption: immunoaffinity chromatography using Monkey IgG coupled to agarose beads
Labeling Ratio:	2.8

## Target Details

---

Target:	IgG
Abstract:	<a href="#">IgG Products</a>
Target Type:	Antibody

## Application Details

---

Application Notes:	<p>Application Note: Anti-Monkey IgG (H&amp;L) DyLight™ 680 conjugated Antibody is suitable for use in immunofluorescence microscopy, fluorescence based plate assays (FLISA) and fluorescent western blotting. This product is also suitable for multiplex analysis, including multicolor imaging, utilizing various commercial platforms. Specific conditions for reactivity and signal detection should be optimized by the end user.</p> <p>FLISA Dilution: &gt;1:20,000</p> <p>Western Blot Dilution: &gt;1:10,000</p> <p>IF Microscopy Dilution: &gt;1:5,000</p>
--------------------	--

Restrictions:	For Research Use only
---------------	-----------------------

## Handling

---

Format:	Lyophilized
Reconstitution:	Reconstitution Volume: 100 µL Reconstitution Buffer: Restore with deionized water (or equivalent)
Buffer:	Buffer: 0.02 M Potassium Phosphate, 0.15 M Sodium Chloride, pH 7.2

## Handling

Stabilizer: 10 mg/mL Bovine Serum Albumin (BSA) - Immunoglobulin and Protease free  
0.01 % (w/v) Sodium Azide

Preservative: Sodium azide

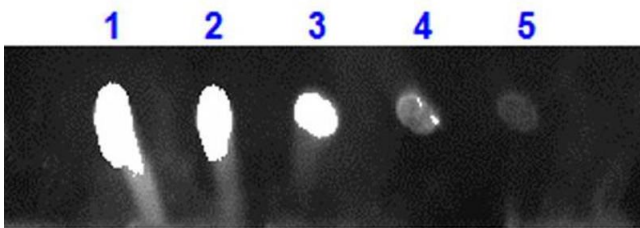
Precaution of Use: This product contains Sodium azide: a POISONOUS AND HAZARDOUS SUBSTANCE which should be handled by trained staff only.

Storage: RT, 4 °C, -20 °C

Storage Comment: Store secondary antibody at 4° C prior to restoration. For extended storage aliquot antibody and freeze at -20° C or below. Avoid cycles of freezing and thawing. Centrifuge product if not completely clear after standing at room temperature. This product is stable for several weeks at 4° C as an undiluted liquid. Dilute only prior to immediate use.

Expiry Date: 12 months

## Images



### Dot Blot

**Image 1.** Dot Blot for Rabbit Anti-MONKEY IgG 680 Conjugation Dot Blot for Rabbit Anti-MONKEY IgG 680 Conjugation. Lane 1: 100 ng Monkey IgG. Lanes 2-5: serial dilution 3 fold of Antigen. Primary Antibody: None. Secondary Antibody: Rabbit Anti-Monkey IgG 680 Conjugation at 1 µg/ml at RT for 1 hour. Block: ABIN925618 at RT for 30 minutes.