

Datasheet for ABIN6699044

Goat anti-Mouse IgG Antibody (Cy5)**1** Image**1** Publication[Go to Product page](#)

Overview

Quantity:	1 mg
Target:	IgG
Reactivity:	Mouse
Host:	Goat
Clonality:	Polyclonal
Conjugate:	Cy5
Application:	ELISA, Western Blotting (WB), Flow Cytometry (FACS), FLISA, Fluorescence Microscopy (FM), Dot Blot (DB)

Product Details

Purpose:	Mouse IgG [H&L] Antibody CY5 Conjugated Pre-adsorbed
Immunogen:	Mouse IgG whole molecule
Isotype:	IgG
Cross-Reactivity (Details):	Minimal crossreactivity against Bv Ch Gt GP Ham Hs Hu Rb Rt & Sh Serum Proteins
Characteristics:	Goat Anti-Mouse IgG (H&L) Antibody CY5 Conjugated Pre-Adsorbed, Goat Anti Mouse IgG Antibody CY5 Conjugated, Cy5 anti-Mouse IgG, Anti-Mouse IgG Cy5 Antibody generated in goat detects reactivity to Mouse IgG.
Labeling Ratio:	12.6

Target Details

Target:	IgG
---------	-----

Target Details

Abstract: [IgG Products](#)

Target Type: Antibody

Background: Secreted as part of the adaptive immune response by plasma B cells, immunoglobulin G constitutes 75 % of serum immunoglobulins. Immunoglobulin G binds to viruses, bacteria, as well as fungi and facilitates their destruction or neutralization via agglutination (and thereby immobilizing them), activation of the complement cascade, and opsonization for phagocytosis. The whole IgG molecule possesses both the F(c) region, recognized by high-affinity Fc receptor proteins, as well as the F(ab) region possessing the epitope-recognition site. Both the Heavy and Light chains of the antibody molecule are present. Secondary Antibodies are available in a variety of formats and conjugate types. When choosing a secondary antibody product, consideration must be given to species and immunoglobulin specificity, conjugate type, fragment and chain specificity, level of cross-reactivity, and host-species source and fragment composition.

Application Details

Application Notes: FLISA_Dilution: 1:10,000 - 1:50,000
Flow_Cytometry_Dilution: 1:500 - 1:2,500
IF_Microscopy_Dilution: 1:1,000 - 1:5,000
Western_Blots_Dilution: User Optimized

Comment: Anti-Mouse IgG Cy5 Antibody has been tested by ELISA, dot blot, and western blot and is designed for flow cytometry, immunofluorescence microscopy, fluorescence based plate assays (FLISA) and fluorescent western blotting. This product is also suitable for multiplex analysis, including multicolor imaging, utilizing various commercial platforms.
Suggested Applications: FC, IF

Restrictions: For Research Use only

Handling

Format: Lyophilized

Reconstitution: Reconstitution Volume: 1.0 mL
Reconstitution Buffer: Restore with deionized water (or equivalent)

Concentration: 1.0 mg/mL

Buffer: 0.02 M Potassium Phosphate, 0.15 M Sodium Chloride, pH 7.2, 10 mg/mL Bovine Serum

Handling

Albumin (BSA) - Immunoglobulin and Protease free, 0.01 % (w/v) Sodium Azide

Preservative: Sodium azide

Precaution of Use: This product contains Sodium azide: a POISONOUS AND HAZARDOUS SUBSTANCE which should be handled by trained staff only.

Storage: 4 °C, -20 °C

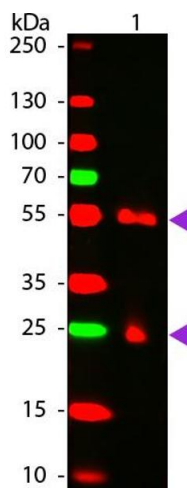
Storage Comment: Store conjugated secondary antibody at 4° C prior to restoration. For extended storage aliquot contents and freeze at -20° C or below. Avoid cycles of freezing and thawing. Centrifuge product if not completely clear after standing at room temperature. Conjugated Secondary Antibody is stable for several weeks at 4° C as an undiluted liquid. Dilute only prior to immediate use.

Expiry Date: 12 months

Publications

Product cited in: Achour, Scott, Shirvani, Thuret, Bismuth, Labbé-Jullié, Marullo: "CD4-CCR5 interaction in intracellular compartments contributes to receptor expression at the cell surface." in: **Blood**, Vol. 113, Issue 9, pp. 1938-47, (2009) ([PubMed](#)).

Images



Western Blotting

Image 1. WBM - MOUSE IgG [H&L] Antibody CY5 Conjugated Pre-adsorbed Western Blot of Cy5 conjugated Goat anti-Mouse IgG Pre-adsorbed secondary antibody. Lane 1: Mouse IgG. Lane 2: none. Load: 50 ng per lane. Primary antibody: none. Secondary antibody: Cy5 goat secondary antibody at 1:1,000 for 60 min at RT. Block: ABIN925618 for 30 min at RT. Predicted/Observed size: 25 & 55 kDa, 25 & 55 kDa for Mouse IgG. Other band(s): none.