

Datasheet for ABIN6699120

Goat anti-Rabbit IgG Antibody (DyLight 800) - Preadsorbed[2 Images](#)[4 Publications](#)[Go to Product page](#)

Overview

Quantity:	100 µg
Target:	IgG
Reactivity:	Rabbit
Host:	Goat
Clonality:	Polyclonal
Conjugate:	DyLight 800
Application:	Western Blotting (WB), FLISA, Fluorescence Microscopy (FM)

Product Details

Immunogen:	Immunogen: Rabbit IgG whole molecule
Isotype:	IgG
Characteristics:	<p>Synonyms: Goat anti-Rabbit IgG Antibody DyLight™800 Conjugation, Goat anti-Rabbit IgG DyLight™ 800 Conjugated Antibody</p> <p>Background: Conjugated DyLight™ 800 secondary antibody is designed for immunofluorescence microscopy, fluorescence based plate assays (FLISA) and fluorescent western blotting. This product is also suitable for multiplex analysis, including multicolor imaging, utilizing various commercial platforms.</p>
Purification:	PreadSORPTION: Solid phase absorption
Labeling Ratio:	2.5

Target Details

Target: IgG

Abstract: [IgG Products](#)

Target Type: Antibody

Application Details

Application Notes: Application Note: The emission spectra for this DyLight™ conjugate match the principle output wavelengths of most common fluorescence instrumentation.

FLISA Dilution: >1:20,000

Western Blot Dilution: >1:10,000

IF Microscopy Dilution: >1:5,000

Restrictions: For Research Use only

Handling

Format: Lyophilized

Reconstitution: Reconstitution Volume: 100 µL

Reconstitution Buffer: Restore with deionized water (or equivalent)

Buffer: Buffer: 0.02 M Potassium Phosphate, 0.15 M Sodium Chloride, pH 7.2

Stabilizer: 10 mg/mL Bovine Serum Albumin (BSA) - Immunoglobulin and Protease free
0.01 % (w/v) Sodium Azide

Preservative: Sodium azide

Precaution of Use: This product contains Sodium azide: a POISONOUS AND HAZARDOUS SUBSTANCE which should be handled by trained staff only.

Storage: RT, 4 °C, -20 °C

Storage Comment: Store vial at 4° C prior to restoration. For extended storage aliquot contents and freeze at -20° C or below. Avoid cycles of freezing and thawing. Centrifuge product if not completely clear after standing at room temperature. This product is stable for several weeks at 4° C as an undiluted liquid. Dilute only prior to immediate use.

Expiry Date: 12 months

Publications

Product cited in: Pereira, Bacman, Arguello, Zekonyte, Williams, Edgell, Moraes: "mitoTev-TALE: a monomeric

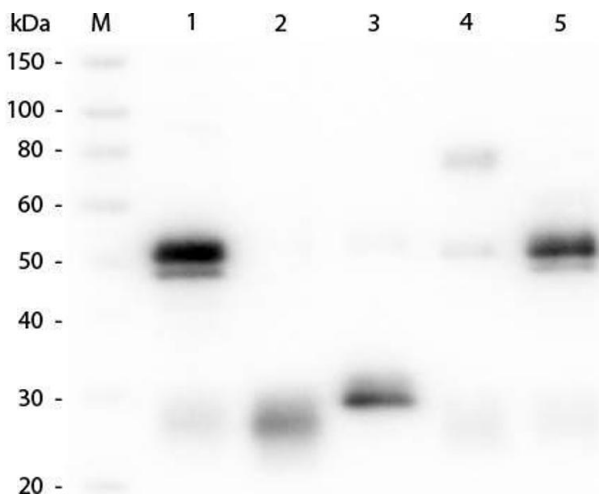
DNA editing enzyme to reduce mutant mitochondrial DNA levels." in: **EMBO molecular medicine**, Vol. 10, Issue 9, (2018) ([PubMed](#)).

Nguyen, Williams, Young, Ma, Li, Levis, Brown, Small: "FLT3 activating mutations display differential sensitivity to multiple tyrosine kinase inhibitors." in: **Oncotarget**, Vol. 8, Issue 7, pp. 10931-10944, (2017) ([PubMed](#)).

Meyer, Neeley, Baker, Washabaugh, Flesher, Nelson, Frankel, Lumeng, Lyssiotis, Wynn, Rhim, ORourke: "Adipocytes promote pancreatic cancer cell proliferation via glutamine transfer." in: **Biochemistry and biophysics reports**, Vol. 7, pp. 144-149, (2016) ([PubMed](#)).

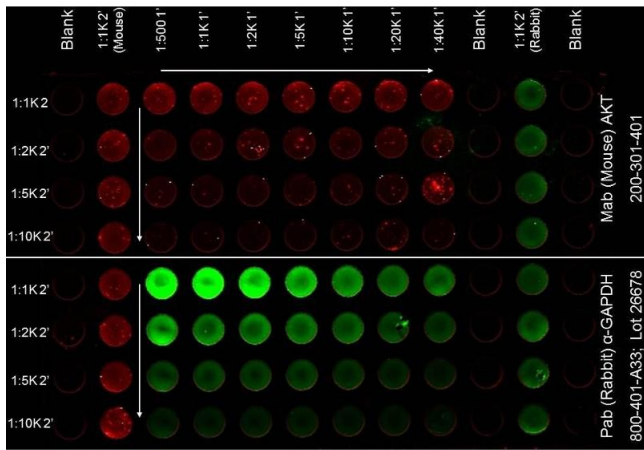
Klammer, Kaminski, Zedler, Oppermann, Blencke, Marx, Müller, Tebbe, Godl, Schaab: "Phosphosignature predicts dasatinib response in non-small cell lung cancer." in: **Molecular & cellular proteomics : MCP**, Vol. 11, Issue 9, pp. 651-68, (2013) ([PubMed](#)).

Images



Western Blotting

Image 1. Western Blot of Anti-Rabbit IgG (H&L) (GOAT) Antibody (Min X Bv, Ch, Gt, GP, Ham, Hs, Hu, Ms, Rt & Sh Serum Proteins). Lane M: 3 µl Molecular Ladder. Lane 1: Rabbit IgG whole molecule. Lane 2: Rabbit IgG F(ab) Fragment. Lane 3: Rabbit IgG F(c) Fragment. Lane 4: Rabbit IgM Whole Molecule. Lane 5: Normal Rabbit Serum. All samples were reduced. Load: 50 ng per lane. Block: ABIN925618 for 30 min at RT. Primary Antibody: Anti-Rabbit IgG (H&L) (GOAT) Antibody (Min X Bv, Ch, Gt, GP, Ham, Hs, Hu, Ms, Rt & Sh Serum Proteins) 1:1,000 for 60 min at RT. Secondary antibody: Anti-Goat IgG (DONKEY) Peroxidase Conjugated Antibody 1:40,000 in ABIN925618 for 30 min at RT. Predicted/Obsevered Size: 25 and 50 kDa for Rabbit IgG and Serum, 25 kDa for F(c) and F(ab), 70 and 23 kDa for IgM. Rabbit F(c) migrates slightly higher.



ELISA

Image 2. ELISA - Rabbit IgG (H&L) Antibody 800 Conjugated Pre-Adsorbed ELISA of 800 Conjugated Goat Anti-Rabbit Secondary Antibody. Antigen: HCT-116 cell line. Coating amount: Confluent in the 96 well plate. Primary antibody: AKT or GAPDH antibody at 2 µg/mL. Dilution series: Primary and Secondary Antibodies 2-fold. Mid-point concentration: N/A. Secondary antibody: 680 donkey secondary antibody and 800 goat secondary antibody starting at 1:1,000. Substrate: None.