

Datasheet for ABIN6699121

Sheep anti-Rabbit IgG Antibody (DyLight 800) - Preadsorbed[Go to Product page](#)**1** Image**2** Publications

Overview

| | |
|--------------|--|
| Quantity: | 100 µg |
| Target: | IgG |
| Reactivity: | Rabbit |
| Host: | Sheep |
| Clonality: | Polyclonal |
| Conjugate: | DyLight 800 |
| Application: | Western Blotting (WB), FLISA, Fluorescence Microscopy (FM) |

Product Details

| | |
|-----------------------------|--|
| Purpose: | Rabbit IgG (H&L) Antibody DyLight™ 800 Conjugated Pre-Adsorbed |
| Immunogen: | Rabbit IgG whole molecule |
| Isotype: | IgG |
| Cross-Reactivity (Details): | Minimal crossreactivity against Bv Ch Gt GP Hs Hu Ms Rt & Sh Serum Proteins |
| Characteristics: | Sheep Anti Rabbit IgG Antibody DyLight 800™ Conjugate, Sheep Anti-Rabbit IgG DyLight 800™ Conjugated Antibody, Anti-Rabbit IgG Antibody DyLight™800 generated in sheep detects rabbit IgG. |
| Purification: | Preadsorption: Pre-Adsorbed |
| Labeling Ratio: | 2.5 |

Target Details

| | |
|--------------|---|
| Target: | IgG |
| Abstract: | IgG Products |
| Target Type: | Antibody |
| Background: | <p>Secreted as part of the adaptive immune response by plasma B cells, immunoglobulin G constitutes 75 % of serum immunoglobulins. Immunoglobulin G binds to viruses, bacteria, as well as fungi and facilitates their destruction or neutralization via agglutination (and thereby immobilizing them), activation of the complement cascade, and opsonization for phagocytosis. The whole IgG molecule possesses both the F(c) region, recognized by high-affinity Fc receptor proteins, as well as the F(ab) region possessing the epitope-recognition site. Both heavy and light chains of the antibody molecule are present. Secondary Antibodies are available in a variety of formats and conjugate types. When choosing a secondary antibody product, consideration must be given to species and immunoglobulin specificity, conjugate type, fragment and chain specificity, level of cross-reactivity, and host-species source and fragment composition. This Anti-Rabbit IgG (H&L) is conjugated to DyLight™800.</p> |

Application Details

| | |
|--------------------|---|
| Application Notes: | <p>FLISA_Dilution: >1:20,000 IF_Microscopy_Dilution: >1:5,000 Western_Blot_Dilution: >1:10,000 Other: User Optimized</p> |
| Comment: | <p>This product is designed for immunofluorescence microscopy, fluorescence based plate assays (FLISA) and fluorescent western blotting. This product is also suitable for multiplex analysis, including multicolor imaging, utilizing various commercial platforms. The emission spectra for this DyLight™ conjugate match the principle output wavelengths of most common fluorescence instrumentation.</p> <p>Suggested Applications: WB</p> |
| Restrictions: | For Research Use only |

Handling

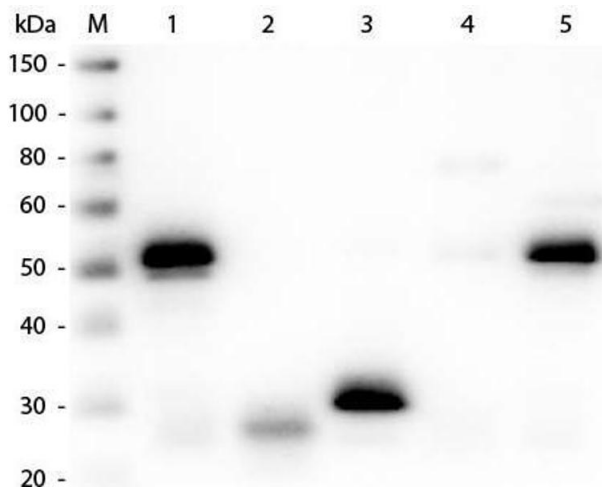
| | |
|-----------------|--|
| Format: | Lyophilized |
| Reconstitution: | <p>Reconstitution Volume: 100 µL Reconstitution Buffer: Restore with deionized water (or equivalent)</p> |

Handling

| | |
|--------------------|---|
| Concentration: | 1.0 mg/mL |
| Buffer: | 0.02 M Potassium Phosphate, 0.15 M Sodium Chloride, pH 7.2, 10 mg/mL Bovine Serum Albumin (BSA) - Immunoglobulin and Protease free, 0.01 % (w/v) Sodium Azide |
| Preservative: | Sodium azide |
| Precaution of Use: | This product contains Sodium azide: a POISONOUS AND HAZARDOUS SUBSTANCE which should be handled by trained staff only. |
| Storage: | 4 °C,-20 °C |
| Storage Comment: | Store conjugated secondary antibody at 4° C prior to restoration. For extended storage aliquot contents and freeze at -20° C or below. Avoid cycles of freezing and thawing. Centrifuge product if not completely clear after standing at room temperature. Conjugated Secondary Antibody is stable for several weeks at 4° C as an undiluted liquid. Dilute only prior to immediate use. |
| Expiry Date: | 12 months |

Publications

| | |
|-------------------|---|
| Product cited in: | <p>Arroum, Borowski, Marx, Schmelter, Scholz, Psathaki, Hippler, Enriquez, Busch: "Loss of respiratory complex I subunit NDUFb10 affects complex I assembly and supercomplex formation." in: Biological chemistry, Vol. 404, Issue 5, pp. 399-415, (2023) (PubMed).</p> <p>Joshi, Almgren-Bell, Anaya, Todd, Van Dyken, Seth, McIntire, Singamaneni, Sutterwala, Morley: "L-plastin enhances NLRP3 inflammasome assembly and bleomycin-induced lung fibrosis." in: Cell reports, Vol. 38, Issue 11, pp. 110507, (2022) (PubMed).</p> <p>Navarro, Tapia-Galisteo, Martín-García, Tarín, Corbacho, Gómez-López, Sánchez-Tirado, Campuzano, González-Cortés, Yáñez-Sedeño, Compte, Álvarez-Vallina, Sanz: "TGF-β-induced IGFBP-3 is a key paracrine factor from activated pericytes that promotes colorectal cancer cell migration and invasion." in: Molecular oncology, Vol. 14, Issue 10, pp. 2609-2628, (2021) (PubMed).</p> <p>Lan, Yuan, Lin: "Sulforaphane induces p53-deficient SW480 cell apoptosis via the ROS-MAPK signaling pathway." in: Molecular medicine reports, Vol. 16, Issue 5, pp. 7796-7804, (2018) (PubMed).</p> |
|-------------------|---|



Western Blotting

Image 1. Western Blot of Unconjugated Anti-Rabbit IgG (H&L) (SHEEP) Antibody (Min X Hu, Gt, Ms Serum Proteins). Lane M: 3 μ l Molecular Ladder. Lane 1: Rabbit IgG whole molecule. Lane 2: Rabbit IgG F(ab) Fragment. Lane 3: Rabbit IgG F(c) Fragment. Lane 4: Rabbit IgM Whole Molecule. Lane 5: Normal Rabbit Serum. All samples were reduced. Load: 50 ng per lane. Block: ABIN925618 for 30 min at RT. Primary Antibody: Anti-Rabbit IgG (H&L) (SHEEP) Antibody (Min X Hu, Gt, Ms Serum Proteins) 1:3,000 for 60 min at RT. Secondary antibody: Anti-Sheep IgG (DONKEY) Peroxidase Conjugated Antibody 1:40,000 in ABIN925618 for 30 min at RT. Predicted/Observed Size: 25 and 50 kDa for Rabbit IgG and Serum, 25 kDa for F(c) and F(ab), 70 and 23 kDa for IgM. Rabbit F(c) migrates slightly higher.