

Datasheet for ABIN6699132

Goat anti-Rat IgG Antibody (Cy3) - Preadsorbed

2 Images

1 Publication



[Go to Product page](#)

Overview

Quantity:	1 mg
Target:	IgG
Reactivity:	Rat
Host:	Goat
Clonality:	Polyclonal
Conjugate:	Cy3
Application:	Flow Cytometry (FACS), FLISA, Fluorescence Microscopy (FM)

Product Details

Immunogen:	Immunogen: Rat IgG whole molecule
Isotype:	IgG
Characteristics:	<p>Synonyms: Goat Anti Rat IgG CY3 Conjugated Antibody, Goat Anti-Rat IgG Antibody CY3</p> <p>Conjugation</p> <p>Background: Anti-Rat IgG (H&L) CY3 Antibody generated in goat detects reactivity to Rat IgG. Secreted as part of the adaptive immune response by plasma B cells, immunoglobulin G constitutes 75 % of serum immunoglobulins. Immunoglobulin G binds to viruses, bacteria, as well as fungi and facilitates their destruction or neutralization via agglutination (and thereby immobilizing them), activation of the complement cascade, and opsonization for phagocytosis. The whole IgG molecule possesses both the F(c) region, recognized by high-affinity Fc receptor proteins, as well as the F(ab) region possessing the epitope-recognition site. Both the Heavy and Light chains of the antibody molecule are present. Secondary Antibodies are available in a variety of formats and conjugate types. When choosing a secondary antibody product,</p>

Product Details

consideration must be given to species and immunoglobulin specificity, conjugate type, fragment and chain specificity, level of cross-reactivity, and host-species source and fragment composition. This Anti-Rat IgG is conjugated to CY3.

Purification: Preadsorption: Solid phase absorption

Labeling Ratio: 9.8

Target Details

Target: IgG

Abstract: [IgG Products](#)

Target Type: Antibody

Application Details

Application Notes: Application Note: This product is designed for immunofluorescence microscopy, fluorescence based plate assays (FLISA) and fluorescent western blotting. This product is also suitable for multiplex analysis, including multicolor imaging, utilizing various commercial platforms. Suitable for immunomicroscopy and flow cytometry or FACS analysis as well as other antibody based fluorescent assays requiring lot-to-lot consistency.

FLISA Dilution: 1:10,000 - 1:50,000

Flow Cytometry Dilution: 1:500 - 1:2,500

IF Microscopy Dilution: 1:1,000 - 1:5,000

Restrictions: For Research Use only

Handling

Format: Lyophilized

Reconstitution: Reconstitution Volume: 1.0 mL
Reconstitution Buffer: Restore with deionized water (or equivalent)

Buffer: Buffer: 0.02 M Potassium Phosphate, 0.15 M Sodium Chloride, pH 7.2
Stabilizer: 10 mg/mL Bovine Serum Albumin (BSA) - Immunoglobulin and Protease free
0.01 % (w/v) Sodium Azide

Preservative: Sodium azide

Precaution of Use: This product contains Sodium azide: a POISONOUS AND HAZARDOUS SUBSTANCE which

Handling

should be handled by trained staff only.

Storage: RT, 4 °C, -20 °C

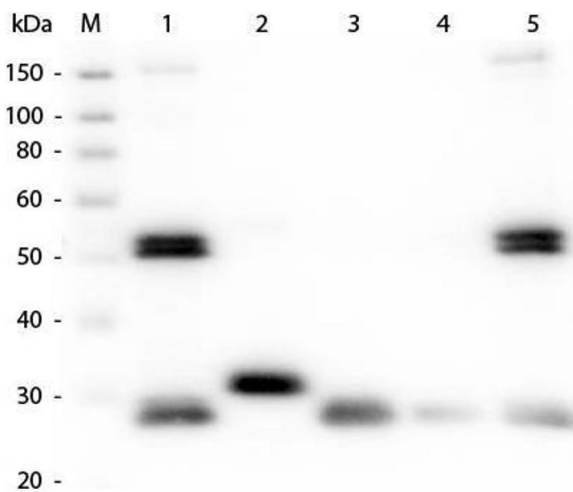
Storage Comment: Store vial at 4° C prior to restoration. For extended storage aliquot contents and freeze at -20° C or below. Avoid cycles of freezing and thawing. Centrifuge product if not completely clear after standing at room temperature. This product is stable for several weeks at 4° C as an undiluted liquid. Dilute only prior to immediate use.

Expiry Date: 12 months

Publications

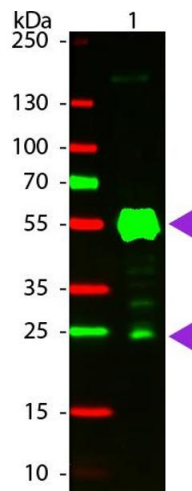
Product cited in: Torigoe, Yamauchi, Zhu, Kobayashi, Murakami: "Association of astrocytes with neurons and astrocytes derived from distinct progenitor domains in the subpallium." in: **Scientific reports**, Vol. 5, pp. 12258, (2016) ([PubMed](#)).

Images



Western Blotting

Image 1. Western Blot of Anti-Rat IgG (H&L) (GOAT) Antibody (Min X Bv Ch Gt GP Ham Hs Hu Ms Rb & Sh Serum Proteins). Lane M: 3 µl Molecular Ladder. Lane 1: Rat IgG whole molecule. Lane 2: Rat IgG F(c) Fragment. Lane 3: Rat IgG Fab Fragment. Lane 4: Rat IgM Whole Molecule. Lane 5: Rat Serum. All samples were reduced. Load: 50 ng per lane. Block: ABIN925618 for 30 min at RT. Primary Antibody: Anti-Rat IgG (H&L) (GOAT) Antibody (Min X Bv Ch Gt GP Ham Hs Hu Ms Rb & Sh Serum Proteins) 1:1,000 for 60 min at RT. Secondary Antibody: Anti-Goat IgG (DONKEY) Peroxidase Conjugated Antibody 1:40,000 in ABIN925618 for 30 min at RT. Predicted/Observed Size: 25 and 55 kDa for Rat IgG and Serum, 25 kDa for F(c) and Fab, 78 and 25 kDa for IgM. Rat F(c) migrates slightly higher.



Western Blotting

Image 2. WB - Rat IgG (H&L) Antibody CY3 Conjugated Pre-Adsorbed Western blot of CY3 Conjugated Goat Anti-Rat IgG Pre-Adsorbed secondary antibody. Lane 1: Rat IgG. Lane 2: None. Load: 50 ng per lane. Primary antibody: None. Secondary antibody: CY3 goat secondary antibody at 1:1,000 for 60 min at RT. Blocking: ABIN925618 for 30 min at RT. Predicted/Observed size: 25 & 55 kDa, 25 & 55 kDa for Rat IgG. Other band(s): Rat IgG splice variants and isoforms.