

Datasheet for ABIN6699134

**Goat anti-Rat IgG Antibody (Cy5) - Preadsorbed**[Go to Product page](#)**2** Images

## Overview

Quantity:	1 mg
Target:	IgG
Reactivity:	Rat
Host:	Goat
Clonality:	Polyclonal
Conjugate:	Cy5
Application:	ELISA, Western Blotting (WB), Flow Cytometry (FACS), FLISA, Fluorescence Microscopy (FM), Dot Blot (DB)

## Product Details

Purpose:	Rat IgG (H&L) Antibody CY5 Conjugated Pre-Adsorbed
Immunogen:	Rat IgG whole molecule
Isotype:	IgG
Cross-Reactivity (Details):	Minimal crossreactivity against Bv Ch Gt GP Ham Hs Hu Ms Rb & Sh Serum Proteins
Characteristics:	Goat Anti Rat IgG CY5 Conjugated Antibody, Goat Anti-Rat IgG Antibody CY5 Conjugation, Anti-Rat IgG (H&L) CY5 Antibody generated in goat detects reactivity to Rat IgG.
Purification:	Preadsorption: Pre-Adsorbed
Labeling Ratio:	7.4

## Target Details

---

Target:	IgG
Abstract:	<a href="#">IgG Products</a>
Target Type:	Antibody
Background:	<p>Secreted as part of the adaptive immune response by plasma B cells, immunoglobulin G constitutes 75 % of serum immunoglobulins. Immunoglobulin G binds to viruses, bacteria, as well as fungi and facilitates their destruction or neutralization via agglutination (and thereby immobilizing them), activation of the complement cascade, and opsonization for phagocytosis. The whole IgG molecule possesses both the F(c) region, recognized by high-affinity Fc receptor proteins, as well as the F(ab) region possessing the epitope-recognition site. Both the Heavy and Light chains of the antibody molecule are present. Secondary Antibodies are available in a variety of formats and conjugate types. When choosing a secondary antibody product, consideration must be given to species and immunoglobulin specificity, conjugate type, fragment and chain specificity, level of cross-reactivity, and host-species source and fragment composition. This Anti-Rat IgG is conjugated to CY5.</p>

## Application Details

---

Application Notes:	<p>FLISA_Dilution: 1:10,000 - 1:50,000</p> <p>Flow_Cytometry_Dilution: 1:500 - 1:2,500</p> <p>IF_Microscopy_Dilution: 1:1,000 - 1:5,000</p> <p>Western_Blot_Dilution: User Optimized</p>
Comment:	<p>Anti-Rat IgG (H&amp;L) CY5 Antibody has been tested by ELISA, dot blot, and western blot. This antibody is designed for flow cytometry, immunofluorescence microscopy, fluorescence based plate assays (FLISA) and fluorescent western blotting. This product is also suitable for multiplex analysis, including multicolor imaging, utilizing various commercial platforms.</p>
Restrictions:	For Research Use only

## Handling

---

Format:	Lyophilized
Reconstitution:	<p>Reconstitution Volume: 1.0 mL</p> <p>Reconstitution Buffer: Restore with deionized water (or equivalent)</p>
Concentration:	1.0 mg/mL
Buffer:	0.02 M Potassium Phosphate, 0.15 M Sodium Chloride, pH 7.2, 10 mg/mL Bovine Serum

## Handling

Albumin (BSA) - Immunoglobulin and Protease free, 0.01 % (w/v) Sodium Azide

Preservative: Sodium azide

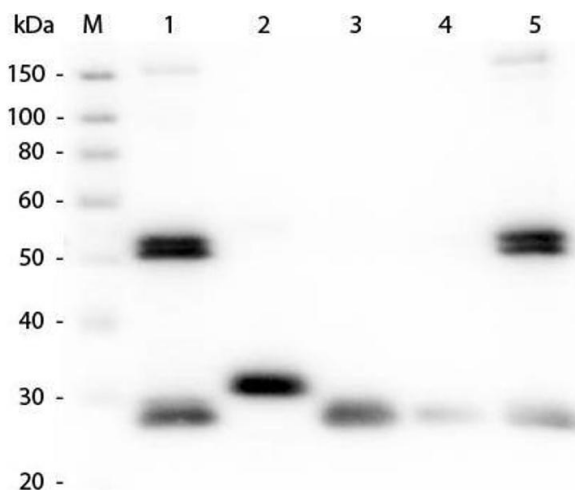
Precaution of Use: This product contains Sodium azide: a POISONOUS AND HAZARDOUS SUBSTANCE which should be handled by trained staff only.

Storage: 4 °C, -20 °C

Storage Comment: Store conjugated secondary antibody at 4° C prior to restoration. For extended storage aliquot contents and freeze at -20° C or below. Avoid cycles of freezing and thawing. Centrifuge product if not completely clear after standing at room temperature. Conjugated Secondary Antibody is stable for several weeks at 4° C as an undiluted liquid. Dilute only prior to immediate use.

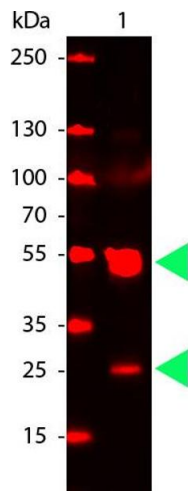
Expiry Date: 12 months

## Images



### Western Blotting

**Image 1.** Western Blot of Anti-Rat IgG (H&L) (GOAT) Antibody (Min X Bv Ch Gt GP Ham Hs Hu Ms Rb & Sh Serum Proteins). Lane M: 3 µl Molecular Ladder. Lane 1: Rat IgG whole molecule. Lane 2: Rat IgG F(c) Fragment. Lane 3: Rat IgG Fab Fragment. Lane 4: Rat IgM Whole Molecule. Lane 5: Rat Serum. All samples were reduced. Load: 50 ng per lane. Block: ABIN925618 for 30 min at RT. Primary Antibody: Anti-Rat IgG (H&L) (GOAT) Antibody (Min X Bv Ch Gt GP Ham Hs Hu Ms Rb & Sh Serum Proteins) 1:1,000 for 60 min at RT. Secondary Antibody: Anti-Goat IgG (DONKEY) Peroxidase Conjugated Antibody 1:40,000 in ABIN925618 for 30 min at RT. Predicted/Observed Size: 25 and 55 kDa for Rat IgG and Serum, 25 kDa for F(c) and Fab, 78 and 25 kDa for IgM. Rat F(c) migrates slightly higher.



### Western Blotting

**Image 2.** Rat IgG (H&L) Antibody CY5 Conjugated Pre-Adsorbed - Western Blot. Western Blot of CY5 conjugated Goat anti-Rat IgG antibody. Lane 1: Rat IgG. Lane 2: none. Load: 50 ng per lane. Primary antibody: none. Secondary antibody: CY5 rat secondary antibody at 1:1,000 for 60 min at RT. Block: ABIN925618 for 30 min at RT. Predicted/Observed size: 55 kDa, 28 kDa for Rabbit IgG. Other band(s): none.