

Datasheet for ABIN6699171

Rabbit anti-Rat IgG Antibody (DyLight 800) - Preadsorbed[Go to Product page](#)**2** Images

Overview

Quantity:	100 µg
Target:	IgG
Reactivity:	Rat
Host:	Rabbit
Clonality:	Polyclonal
Conjugate:	DyLight 800
Application:	Western Blotting (WB), FLISA, Fluorescence Microscopy (FM), Dot Blot (DB)

Product Details

Purpose:	Rat IgG (H&L) Antibody DyLight™ 800 Conjugated Pre-Adsorbed
Immunogen:	Rat IgG whole molecule
Isotype:	IgG
Cross-Reactivity (Details):	Minimal crossreactivity against Human Serum Proteins
Characteristics:	Rabbit anti-Rat IgG DyLight™ 800 Conjugated Antibody, Rabbit anti-Rat IgG Antibody DyLight™800 Conjugation, Anti-Rat IgG (H&L) DyLight™800 Antibody generated in rabbit detects reactivity to Rat IgG.
Purification:	Preadsorption: Pre-Adsorbed
Labeling Ratio:	2.0

Target Details

Target:	IgG
Abstract:	IgG Products
Target Type:	Antibody
Background:	<p>Secreted as part of the adaptive immune response by plasma B cells, immunoglobulin G constitutes 75 % of serum immunoglobulins. Immunoglobulin G binds to viruses, bacteria, as well as fungi and facilitates their destruction or neutralization via agglutination (and thereby immobilizing them), activation of the complement cascade, and opsonization for phagocytosis. The whole IgG molecule possesses both the F(c) region, recognized by high-affinity Fc receptor proteins, as well as the F(ab) region possessing the epitope-recognition site. Both the Heavy and Light chains of the antibody molecule are present. Secondary Antibodies are available in a variety of formats and conjugate types. When choosing a secondary antibody product, consideration must be given to species and immunoglobulin specificity, conjugate type, fragment and chain specificity, level of cross-reactivity, and host-species source and fragment composition. This Anti-Rat IgG is conjugated to DyLight™800.</p>

Application Details

Application Notes:	<p>FLISA_Dilution: >1:20,000 IF_Microscopy_Dilution: >1:5,000 Western_Blots_Dilution: 1:10,000-1:25,000 Other: User Optimized</p>
Comment:	<p>Anti-Rat IgG (H&L) DyLight™800 Antibody has been tested by dot blot and is designed for immunofluorescence microscopy, fluorescence based plate assays (FLISA) and fluorescent western blotting. This product is also suitable for multiplex analysis, including multicolor imaging, utilizing various commercial platforms. The emission spectra for this DyLight™ conjugate match the principle output wavelengths of most common fluorescence instrumentation.</p>
Restrictions:	For Research Use only

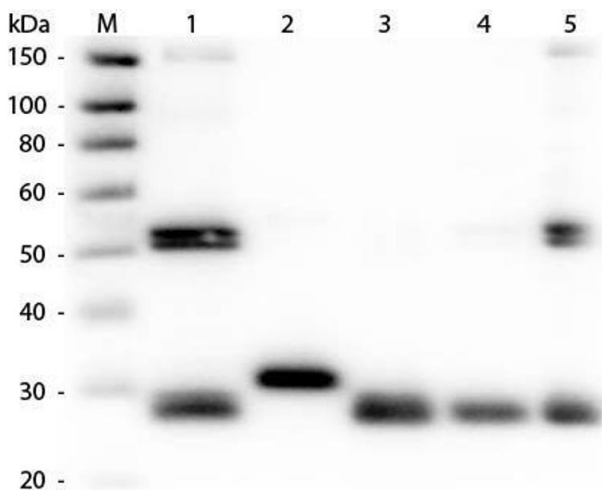
Handling

Format:	Lyophilized
Reconstitution:	<p>Reconstitution Volume: 100 µL Reconstitution Buffer: Restore with deionized water (or equivalent)</p>

Handling

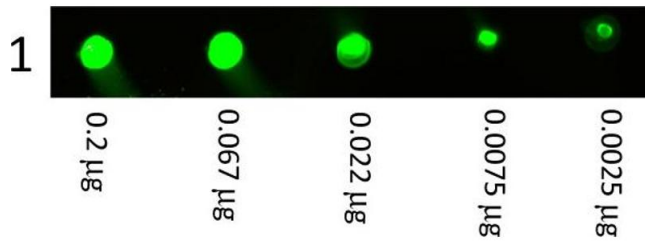
Concentration:	1.0 mg/mL
Buffer:	0.02 M Potassium Phosphate, 0.15 M Sodium Chloride, pH 7.2, 10 mg/mL Bovine Serum Albumin (BSA) - Immunoglobulin and Protease free, 0.01 % (w/v) Sodium Azide
Preservative:	Sodium azide
Precaution of Use:	This product contains Sodium azide: a POISONOUS AND HAZARDOUS SUBSTANCE which should be handled by trained staff only.
Storage:	4 °C,-20 °C
Storage Comment:	Store conjugated secondary antibody at 4° C prior to restoration. For extended storage aliquot contents and freeze at -20° C or below. Avoid cycles of freezing and thawing. Centrifuge product if not completely clear after standing at room temperature. Conjugated Secondary Antibody is stable for several weeks at 4° C as an undiluted liquid. Dilute only prior to immediate use.
Expiry Date:	12 months

Images



Western Blotting

Image 1. Western Blot of Anti-Rat IgG (H&L) (RABBIT) Antibody (Min X Human Serum Proteins). Lane M: 3 µl Molecular Ladder. Lane 1: Rat IgG whole molecule. Lane 2: Rat IgG F(c) Fragment. Lane 3: Rat IgG Fab Fragment. Lane 4: Rat IgM Whole Molecule. Lane 5: Rat Serum. All samples were reduced. Load: 50 ng per lane. Block: ABIN925618 for 30 min at RT. Primary Antibody: Anti-Rat IgG (H&L) (RABBIT) Antibody (Min X Human Serum Proteins) 1:1,000 for 60 min at RT. Secondary Antibody: Anti-Rabbit IgG (GOAT) Peroxidase Conjugated Antibody 1:40,000 in ABIN925618 for 30 min at RT. Predicted/Observed Size: 25 and 55 kDa for Rat IgG and Serum, 25 kDa for F(c) and Fab, 78 and 25 kDa for IgM. Rat F(c) migrates slightly higher.



Western Blotting

Image 2. DyLight™ 800 Rabbit Anti Rat IgG (H&L) Antibody – Dot Blot Dot Blot showing the detection of Rat IgG. A three-fold serial dilution of Rat IgG starting at 200ng was spotted onto 0.45 µm nitrocellulose. After blocking in Blocking Buffer for Fluorescent Western Blotting 1 Hour at 20°C, Anti-Rat IgG (H&L) (RABBIT) Antibody 800 Conjugated (Min X Human Serum Proteins) secondary antibody was used at 1:5000 in Blocking Buffer for Fluorescent Western Blotting and imaged on the LiCor Odyssey imaging system.