

Datasheet for ABIN6699192

Donkey anti-Sheep IgG Antibody (DyLight 680) - Preadsorbed



[Go to Product page](#)

1 Image

1 Publication

Overview

Quantity:	100 µg
Target:	IgG
Reactivity:	Sheep
Host:	Donkey
Clonality:	Polyclonal
Conjugate:	DyLight 680
Application:	Western Blotting (WB), FLISA, Fluorescence Microscopy (FM)

Product Details

Purpose:	Sheep IgG (H&L) Antibody DyLight™ 680 Conjugated Pre-Adsorbed
Immunogen:	Sheep IgG whole molecule
Isotype:	IgG
Cross-Reactivity (Details):	Minimal crossreactivity against Ch GP Ham Hs Hu Ms Rb & Rt Serum Proteins
Characteristics:	Donkey Anti Sheep IgG DyLight 680™ Conjugated Antibody, Donkey Anti-Sheep IgG Antibody DyLight 680™ Conjugation, Anti-Sheep IgG (H&L) DyLight™ 680 Antibody generated in donkey detects reactivity to sheep IgG.
Purification:	Preadsorption: Pre-Adsorbed
Labeling Ratio:	3.1

Target Details

Target:	IgG
Abstract:	IgG Products
Target Type:	Antibody
Background:	<p>Secreted as part of the adaptive immune response by plasma B cells, immunoglobulin G constitutes 75 % of serum immunoglobulins. Immunoglobulin G binds to viruses, bacteria, as well as fungi and facilitates their destruction or neutralization via agglutination (and thereby immobilizing them), activation of the compliment cascade, and opsonization for phagocytosis. The whole IgG molecule possesses both the F(c) region, recognized by high-affinity Fc receptor proteins, as well as the F(ab) region possessing the epitope-recognition site. Both the Heavy and Light chains of the antibody molecule are present. Secondary Antibodies are available in a variety of formats and conjugate types. When choosing a secondary antibody product, consideration must be given to species and immunoglobulin specificity, conjugate type, fragment and chain specificity, level of cross-reactivity, and host-species source and fragment composition. This Anti-Sheep IgG is conjugated to DyLight™680.</p>

Application Details

Application Notes:	<p>FLISA_Dilution: >1:20,000 IF_Microscopy_Dilution: >1:5,000 Western_Blots_Dilution: >1:10,000 Other: User Optimized</p>
Comment:	<p>Anti-Sheep IgG (H&L) DyLight™680 Antibody has been tested by western blot and is designed for immunofluorescence microscopy, fluorescence based plate assays (FLISA) and fluorescent western blotting. This product is also suitable for multiplex analysis, including multicolor imaging, utilizing various commercial platforms. The emission spectra for this DyLight™ conjugate match the principle output wavelengths of most common fluorescence instrumentation.</p>
Restrictions:	For Research Use only

Handling

Format:	Lyophilized
Reconstitution:	<p>Reconstitution Volume: 100 µL Reconstitution Buffer: Restore with deionized water (or equivalent)</p>

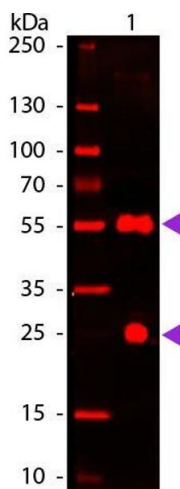
Handling

Concentration:	1.0 mg/mL
Buffer:	0.02 M Potassium Phosphate, 0.15 M Sodium Chloride, pH 7.2, 10 mg/mL Bovine Serum Albumin (BSA) - Immunoglobulin and Protease free, 0.01 % (w/v) Sodium Azide
Preservative:	Sodium azide
Precaution of Use:	This product contains Sodium azide: a POISONOUS AND HAZARDOUS SUBSTANCE which should be handled by trained staff only.
Storage:	4 °C,-20 °C
Storage Comment:	Store conjugated secondary antibody at 4° C prior to restoration. For extended storage aliquot contents and freeze at -20° C or below. Avoid cycles of freezing and thawing. Centrifuge product if not completely clear after standing at room temperature. Conjugated Secondary Antibody is stable for several weeks at 4° C as an undiluted liquid. Dilute only prior to immediate use.
Expiry Date:	12 months

Publications

Product cited in: Volpato, Ollech, Alvelid, Damenti, Müller, York, Ingaramo, Testa: "Extending fluorescence anisotropy to large complexes using reversibly switchable proteins." in: **Nature biotechnology**, Vol. 41, Issue 4, pp. 552-559, (2023) ([PubMed](#)).

Images



Western Blotting

Image 1. Western blot of 680 conjugated Donkey Anti-Sheep IgG Pre-Adsorbed secondary antibody. Lane 1: Sheep IgG. Lane 2: None. Load: 50 ng per lane. Primary antibody: None. Secondary antibody: 680 donkey secondary antibody at 1:5,000 for 60 min at RT. Blocking: ABIN925618 for 30 min at RT. Predicted/Observed size: 25 & 55 kDa, 25 & 55 kDa for Sheep IgG. Other band(s): None.