



Datasheet for ABIN669936
anti-KIT Ligand antibody (AA 151-250)



[Go to Product page](#)

5 Images

4 Publications

Overview

Quantity:	100 µL
Target:	KIT Ligand (KITLG)
Binding Specificity:	AA 151-250
Reactivity:	Human, Mouse, Rat
Host:	Rabbit
Clonality:	Polyclonal
Conjugate:	This KIT Ligand antibody is un-conjugated
Application:	Western Blotting (WB), ELISA, Flow Cytometry (FACS), Immunohistochemistry (Paraffin-embedded Sections) (IHC (p)), Immunofluorescence (Cultured Cells) (IF (cc)), Immunofluorescence (Paraffin-embedded Sections) (IF (p)), Immunohistochemistry (Frozen Sections) (IHC (fro))

Product Details

Immunogen:	KLH conjugated synthetic peptide derived from human SCF
Isotype:	IgG
Cross-Reactivity:	Human, Mouse, Rat
Purification:	Purified by Protein A.

Target Details

Target:	KIT Ligand (KITLG)
Alternative Name:	SCF (KITLG Products)

Target Details

Background: Synonyms: SF, MGF, SCF, FPH2, KL-1, Kitl, SHEP7, Kit ligand, Mast cell growth factor, Stem cell factor, c-Kit ligand, KITLG

Background: Ligand for the receptor-type protein-tyrosine kinase KIT. Plays an essential role in the regulation of cell survival and proliferation, hematopoiesis, stem cell maintenance, gametogenesis, mast cell development, migration and function, and in melanogenesis. KITLG/SCF binding can activate several signaling pathways. Promotes phosphorylation of PIK3R1, the regulatory subunit of phosphatidylinositol 3-kinase, and subsequent activation of the kinase AKT1. KITLG/SCF and KIT also transmit signals via GRB2 and activation of RAS, RAF1 and the MAP kinases MAPK1/ERK2 and/or MAPK3/ERK1. KITLG/SCF and KIT promote activation of STAT family members STAT1, STAT3 and STAT5. KITLG/SCF and KIT promote activation of PLCG1, leading to the production of the cellular signaling molecules diacylglycerol and inositol 1,4,5-trisphosphate. KITLG/SCF acts synergistically with other cytokines, probably interleukins.

Gene ID: 4254

UniProt: [P21583](#)

Pathways: [RTK Signaling](#), [Fc-epsilon Receptor Signaling Pathway](#), [EGFR Signaling Pathway](#), [Neurotrophin Signaling Pathway](#)

Application Details

Application Notes: WB 1:300-5000
ELISA 1:500-1000
FCM 1:20-100
IHC-P 1:200-400
IHC-F 1:100-500
IF(IHC-P) 1:50-200
IF(IHC-F) 1:50-200
IF(ICC) 1:50-200

Restrictions: For Research Use only

Handling

Format: Liquid

Concentration: 1 µg/µL

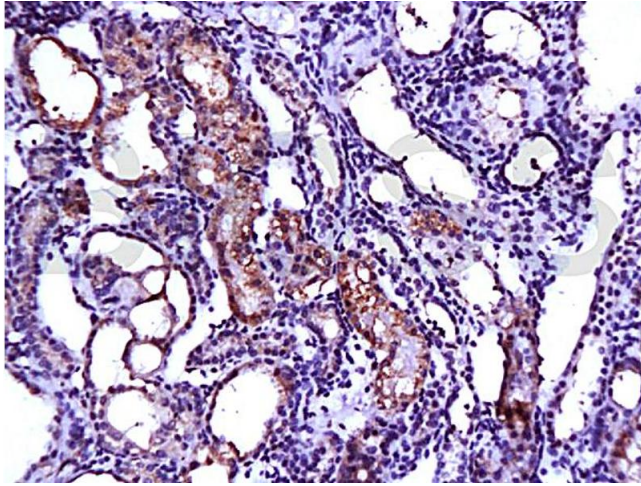
Buffer: 0.01M TBS(pH 7.4) with 1 % BSA, 0.02 % Proclin300 and 50 % Glycerol.

Handling

Preservative:	ProClin
Precaution of Use:	This product contains ProClin: a POISONOUS AND HAZARDOUS SUBSTANCE, which should be handled by trained staff only.
Storage:	4 °C,-20 °C
Storage Comment:	Shipped at 4°C. Store at -20°C for one year. Avoid repeated freeze/thaw cycles.
Expiry Date:	12 months

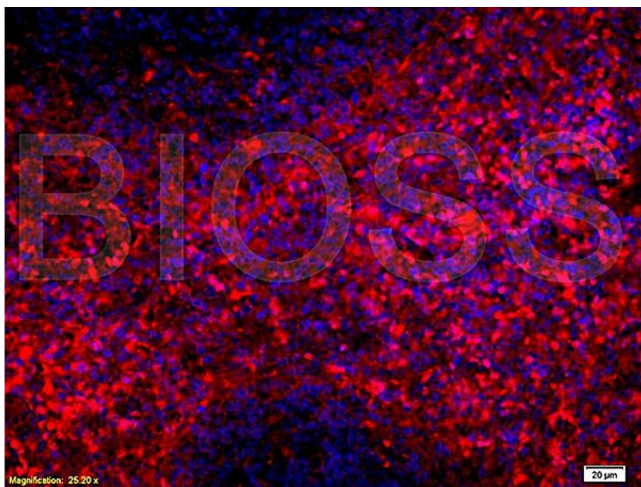
Publications

Product cited in:	<p>Yin, Liang, Wang, Yan, Yin, Wu, Su: "Naringenin induces laxative effects by upregulating the expression levels of c-Kit and SCF, as well as those of aquaporin 3 in mice with loperamide-induced constipation." in: International journal of molecular medicine, Vol. 41, Issue 2, pp. 649-658, (2018) (PubMed).</p> <p>Lin, Tang, Cai, Wang, Li, Sui, Guo: "NPs/NPRs Signaling Pathways May Be Involved in Depression-Induced Loss of Gastric ICC by Decreasing the Production of mSCF." in: PLoS ONE, Vol. 11, Issue 2, pp. e0149031, (2016) (PubMed).</p> <p>Wang, Wang, Li, Liu, Jiang, Li, Cao, Zhao, Wang, Luo: "Silencing stem cell factor attenuates stemness and inhibits migration of cancer stem cells derived from Lewis lung carcinoma cells." in: Tumour biology, Vol. 37, Issue 6, pp. 7213-27, (2016) (PubMed).</p> <p>Goldstein, Goss, Hatzistergos, Rangel, Seidler, Saur, Hare: "Adult c-Kit(+) progenitor cells are necessary for maintenance and regeneration of olfactory neurons." in: The Journal of comparative neurology, (2014) (PubMed).</p>
-------------------	---



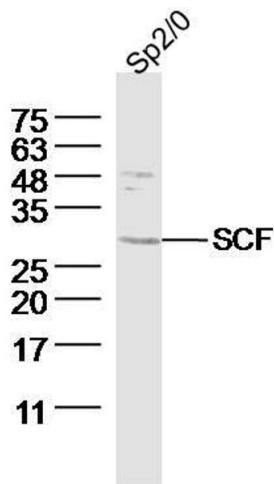
Immunohistochemistry

Image 1. Formalin-fixed and paraffin embedded rat kidney tissue labeled with Anti-SCF Polyclonal Antibody (ABIN669936), Unconjugated at 1:200, followed by conjugation to the secondary antibody and DAB staining



Immunofluorescence

Image 2. Formalin-fixed and paraffin embedded rat spleen tissue labeled with Anti-SCF Polyclonal Antibody (ABIN669936) , Unconjugated at 1:200, followed by conjugation to the secondary antibody Goat Anti-Rabbit IgG, PE conjugated used at 1:200 dilution for 40 minutes at 37 °C. DAPI (5 μg/mL,blue) was used to stain the cell nuclei



Western Blotting

Image 3. Sp2/0 (Mouse myeloma cell) lysates probed with SCF Polyclonal Antibody, Unconjugated at 1:300 dilution and 4°C overnight incubation. Followed by conjugated secondary antibody incubation at 1:10000 for 60 min at 37°C.

Please check the [product details page](#) for more images. Overall 5 images are available for ABIN669936.