

Datasheet for ABIN6699584  
**CD40 Ligand Protein (CD40LG)**



[Go to Product page](#)

2 Images

## Overview

Quantity:	5 µg
Target:	CD40 Ligand (CD40LG)
Origin:	Mouse
Source:	Escherichia coli (E. coli)
Protein Type:	Recombinant

## Product Details

Characteristics:	TNFSF5, TNF-related activation protein (TRAP), CD154, gp39, T-BAM
Purification:	CD40 Ligand purity was determined to be greater than 98% as determined by analysis by HpLC, UV-Spectroscopy at 280nm, and by reducing and non-reducing SDS-pAGE.
Endotoxin Level:	Low endotoxin

## Target Details

Target:	CD40 Ligand (CD40LG)
Alternative Name:	CD40 Ligand ( <a href="#">CD40LG Products</a> )
UniProt:	<a href="#">P27548</a>
Pathways:	<a href="#">NF-kappaB Signaling</a> , <a href="#">Production of Molecular Mediator of Immune Response</a> , <a href="#">Cancer Immune Checkpoints</a>

## Application Details

Application Notes:	Application Note: CD40 Ligand Recombinant Protein is suitable as a control for polyclonal or
--------------------	--

## Application Details

monoclonal anti-CD40 Ligand in immunological assays. Buffer Formulation: 10 mM sodium phosphate, 50 mM arginine, pH 7.5.

Other Performance Data: Endotoxin Level: Measured by kinetic LAL analysis and is typically  $\leq 1$  EU/ $\mu$ g protein. Biologic Activity: The activity is tested by HEK-blue™ CD40L Activity. Acceptable Level  $<50$  ng/mL,  $>2.0 \times 10^4$  units/mg. Additionally testing by ELISA: IL-8 production by human PBMCs.

Restrictions: For Research Use only

## Handling

Format: Lyophilized

Reconstitution: Reconstitution Volume: 5  $\mu$ L (5-50  $\mu$ L)  
Reconstitution Buffer: Restore with deionized water (or equivalent)

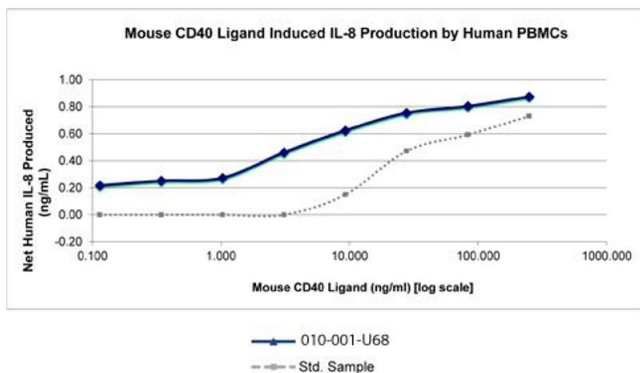
Buffer: Stabilizer: None

Preservative: Without preservative

Storage: RT, 4 °C, -20 °C

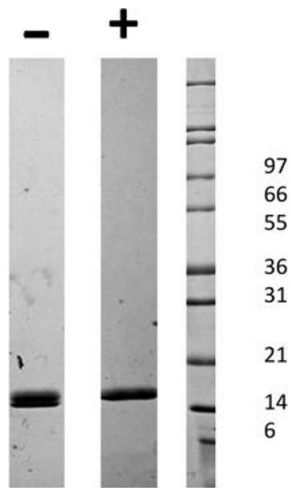
Expiry Date: 6 months

## Images



### SDS-PAGE

**Image 1.** SDS-PAGE of Mouse CD40 Ligand Recombinant Protein Bioactivity of Mouse CD40 Ligand Recombinant Protein. Serial dilutions of Mouse CD-40 Ligand, starting at 250 ng/mL, were added to human PBMCs. After 39 hours, cell supernatant was collected and human IL-8 was measured via ELISA and the linear portion of the curve was used to calculate the ED50. The ED50 of Mouse CD40 Ligand is 3.7-5.5 ng/mL. This value is comparable to the typical expected range of human CD40 Ligand is 5-10 ng/mL.



### SDS-PAGE

**Image 2.** SDS-PAGE of Mouse CD40 Ligand Recombinant Protein SDS-PAGE of Mouse CD40 Ligand Recombinant Protein. Lane 1: 1  $\mu$ g Mouse CD40 Ligand in non-reducing conditions . Lane 2: 1  $\mu$ g Mouse CD40 Ligand in reducing conditions (+). Lane 3: Molecular weight marker. Mouse CD40 Ligand has a predicted MW of 16.4 kDa.