

Datasheet for ABIN6699630

CCL3 Protein**2** Images[Go to Product page](#)

Overview

Quantity:	100 µg
Target:	CCL3
Origin:	Rat
Source:	Escherichia coli (E. coli)
Protein Type:	Recombinant
Application:	SDS-PAGE (SDS)

Product Details

Purpose:	Rat Macrophage Inflammatory Protein-1 alpha (CCL3) Recombinant Protein
Purification:	Macrophage Inflammatory protein-1 alpha (CCL3) purity was determined to be greater than 95% as determined by analysis by UV-Spectroscopy at 280nm and by reducing and non-reducing SDS-pAGE.
Purity:	95,00%
Endotoxin Level:	Measured by LAL is typically ≤ 1 EU/µg protein.
Biological Activity Comment:	The activity is determined by the ability to chemoattract human PBMCs at 1-10 ng/mL.

Target Details

Target:	CCL3
Alternative Name:	Ccl3 (CCL3 Products)
Background:	Synonyms: LD78α, Macrophage inflammatory protein 1-alpha (MIP-1-alpha) Background: Macrophage Inflammatory Protein-1 alpha (MIP-1α), also known as CCL3, is

Target Details

produced by macrophages and is thought to induce inflammatory responses, including superoxide production by neutrophils. MIP-1 α can exist as a naturally occurring heterodimer with MIP-1 β and has been shown to have antiviral activity against HSV-1. Recombinant rat MIP-1 α is a non-glycosylated protein, containing 69 amino acids, with a molecular weight of 7.8 kDa.

UniProt: [P50229](#)

Pathways: [Cellular Response to Molecule of Bacterial Origin, Autophagy](#)

Application Details

Application Notes: Other: User Optimized
Application_Note: Macrophage Inflammatory Protein-1 alpha Recombinant Protein has been tested by SDS-PAGE and biological activity and is suitable as a control for polyclonal or monoclonal anti-Macrophage Inflammatory Protein-1 alpha in immunological assays.

Comment: Suggested_Applications: Cellular Assay
Other_Performance_Data:

Restrictions: For Research Use only

Handling

Format: Lyophilized

Reconstitution: Reconstitution_Buffer: Restore with deionized water (or equivalent)
Reconstitution_Volume: 100 μ L

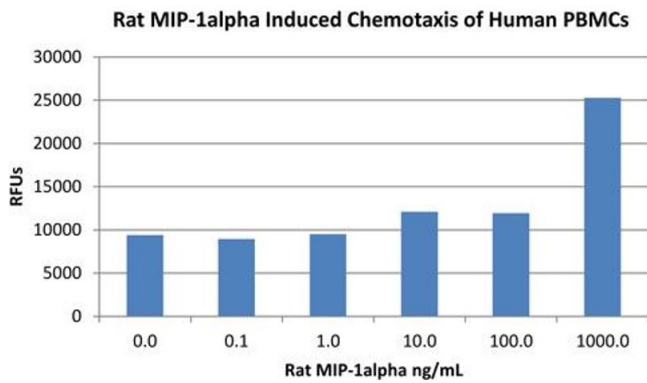
Buffer: Buffer: 0.1 % Trifluoroacetic acid
Stabilizer: None

Preservative: Without preservative

Storage: 4 $^{\circ}$ C, -20 $^{\circ}$ C

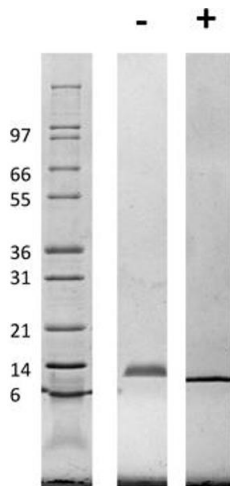
Storage Comment: Store vial at 4 $^{\circ}$ C prior to restoration. Dilute only prior to immediate use. Maintain sterility. This product DOES NOT contain preservative. DO NOT VORTEX. We recommend adding a carrier protein such as HSA or BSA to 0.1% (i.e. 1.0 mg/mL). For best results aliquot contents and freeze at -20 $^{\circ}$ C or colder. Avoid cycles of freezing and thawing. Centrifuge vial before each opening to dislodge contents from the cap and to clarify if contents are not clear after standing at room temperature.

Expiry Date: 6 months



SDS-PAGE

Image 1. SDS-PAGE of Rat Macrophage Inflammatory Protein-1 alpha (CCL3) Recombinant Protein Bioactivity of Rat Macrophage Inflammatory Protein-1 alpha (CCL3) Recombinant Protein. Human PBMCs were allowed to migrate to Rat MIP-1 alpha at (0, 0.19, 0.78, 3.1, 12.5 and 200 ng/mL). After 4 hours, cells that migrated were counted using a luminescent substrate and displayed on the bar graph above. Significant increases in migration over basal levels were seen in response to Rat MIP-1 alpha starting at 10 ng/mL. This value is comparable to expected ranges of a chemotactic response of primary human monocytes.



SDS-PAGE

Image 2. SDS-PAGE of Rat Macrophage Inflammatory Protein-1 alpha (CCL3) Recombinant Protein SDS-PAGE of Rat Macrophage Inflammatory Protein-1 alpha (CCL3) Recombinant Protein. Lane 1: Molecular weight marker. Lane 2: 1 µg Rat MIP-1 in non-reducing conditions. Lane 3: 1 µg Rat MIP-1 in reducing conditions (+). Rat MIP-1 alpha has a predicted MW of 7.8 kDa.