

Datasheet for ABIN6699643

CCL7 Protein**2** Images[Go to Product page](#)

Overview

Quantity:	10 µg
Target:	CCL7
Origin:	Human
Source:	Escherichia coli (E. coli)
Protein Type:	Recombinant

Product Details

Characteristics:	CCL7, MARC
Purification:	Monocyte Chemotactic protein-3 (CCL7) purity was determined to be greater than 98% as determined by HPLC, analysis by UV-Spectroscopy at 280nm, and by reducing and non-reducing SDS-pAGE.
Endotoxin Level:	Low endotoxin

Target Details

Target:	CCL7
Alternative Name:	CCL7 (CCL7 Products)
UniProt:	Q7Z7Q8

Application Details

Application Notes:	Application Note: Monocyte Chemotactic Protein-3 Recombinant Protein is suitable as a control for polyclonal or monoclonal anti-Monocyte Chemotactic Protein-3 in immunological assays.
--------------------	---

Application Details

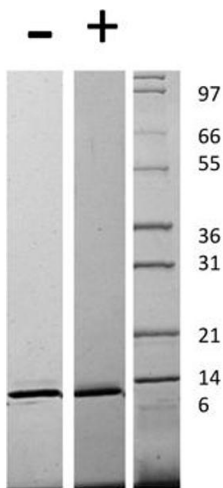
Other Performance Data: Endotoxin Level: Measured by kinetic LAL analysis and is typically ≤ 1 EU/ μ g protein. Biologic Activity: The activity is determined by the ability to chemoattract human PBMCs, human neutrophils or THP-1 cells and is typically 10-100 ng/mL.

Restrictions: For Research Use only

Handling

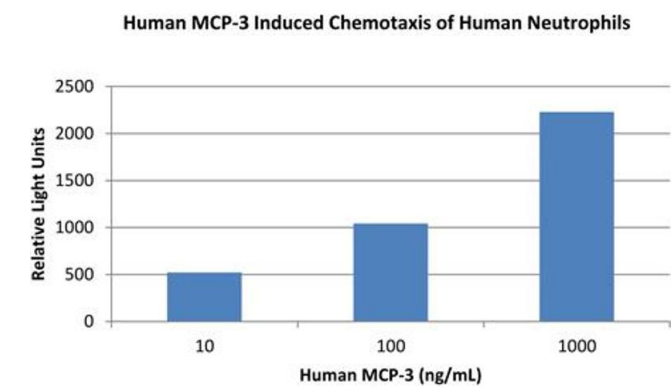
Format:	Lyophilized
Reconstitution:	Reconstitution Volume: 10 μ L (10-100 μ L) Reconstitution Buffer: Restore with deionized water (or equivalent)
Buffer:	Buffer: 0.1 % Trifluoroacetic acid
Preservative:	Without preservative
Storage:	RT, 4 °C, -20 °C
Expiry Date:	6 months

Images



SDS-PAGE

Image 1. SDS-PAGE of Human Monocyte Chemotactic Protein-3 (CCL7) Recombinant Protein. Lane 1: 1 μ g Human MCP-3 in non-reducing conditions . Lane 2: 1 μ g Human MCP-3 in reducing conditions (+). Lane 3: Molecular weight marker. Human MCP-3 has a predicted MW of 9 kDa.



SDS-PAGE

Image 2. SDS-PAGE of Human Monocyte Chemotactic Protein-3 (CCL7) Recombinant Protein Bioactivity of Human Monocyte Chemotactic Protein-3 (CCL7) Recombinant Protein. Triplicate samples of primary human neutrophils from three donors were allowed to migrate to Human MCP-3 (10, 100 and 1000 ng/mL). After 30 minutes, cells that migrated were counted using a luminescent substrate and displayed on the bar graph above. Significant levels of migration over basal were seen in response to Human MCP-3/CCL7 starting at 10 ng/mL.