

Datasheet for ABIN6699647

CCL7 Protein**2** Images[Go to Product page](#)

Overview

Quantity:	10 µg
Target:	CCL7
Origin:	Mouse
Source:	Escherichia coli (E. coli)
Protein Type:	Recombinant

Product Details

Characteristics:	Intercrine/chemokine MARC, Monocyte chemoattractant protein 3, Monocyte chemotactic protein 3 (MCP-3), Protein FIC, Small-inducible cytokine A7
Purification:	Monocyte Chemotactic protein-3 (CCL7) purity was determined to be greater than 98% as determined by HpLC, analysis by UV-Spectroscopy at 280nm, and by reducing and non-reducing SDS-pAGE.
Endotoxin Level:	Low endotoxin

Target Details

Target:	CCL7
Alternative Name:	CCL7 (CCL7 Products)
UniProt:	Q03366

Application Details

Application Notes:	Application Note: Monocyte Chemotactic Protein-3 Recombinant Protein is suitable as a control
--------------------	---

Application Details

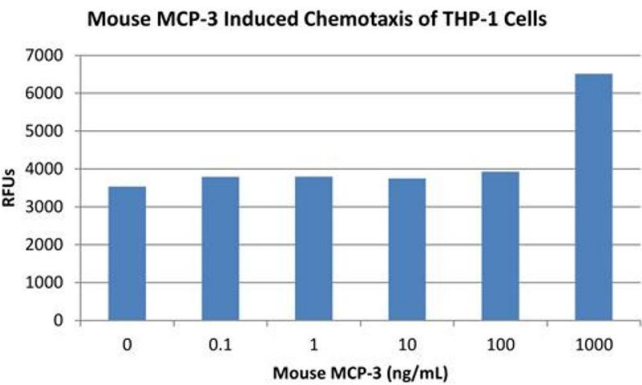
for polyclonal or monoclonal anti-Monocyte Chemotactic Protein-3 in immunological assays.
Other Performance Data: Endotoxin Level: Measured by kinetic LAL analysis and is typically ≤ 1 EU/ μ g protein. Biologic Activity: The activity is determined by its ability to chemoattract THP-1 cells at 10-100 ng/mL.

Restrictions: For Research Use only

Handling

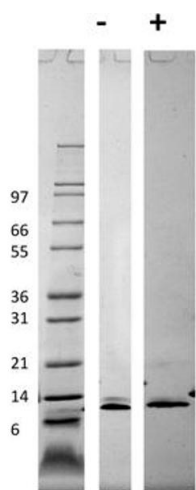
Format:	Lyophilized
Reconstitution:	Reconstitution Volume: 10 μ L (10-100 μ L) Reconstitution Buffer: Restore with deionized water (or equivalent)
Buffer:	Buffer: 0.1 % Trifluoroacetic acid
Preservative:	Without preservative
Storage:	RT,4 °C,-20 °C
Expiry Date:	6 months

Images



SDS-PAGE

Image 1. SDS-PAGE of Mouse Monocyte Chemotactic Protein-3 (CCL7) Recombinant Protein Bioactivity of Mouse Monocyte Chemotactic Protein-3 (CCL7) Recombinant Protein. Human THP-1 cells were allowed to migrate to Mouse MCP-3 at (0, 0.1, 1, 10, 100 and 1000 ng/mL). After 45 minutes, cells that migrated were counted using a luminescent substrate and displayed on the bar graph above. Significant increases in migration over basal levels were seen in response to Mouse MCP-3 starting at 1000 ng/mL. This value is comparable to expected ranges of a chemotactic response of primary human monocytes.



SDS-PAGE

Image 2. SDS-PAGE of Mouse Monocyte Chemotactic Protein-3 (CCL7) Recombinant Protein SDS-PAGE of Mouse Monocyte Chemotactic Protein-3 (CCL7) Recombinant Protein. Lane 1: Molecular weight marker. Lane 2: 1 µg Mouse MCP-3 in non-reducing conditions . Lane 3: 1 µg Mouse MCP-3 in reducing conditions (+). Mouse MCP-3 has a predicted MW of 8.5 kDa.