

Datasheet for ABIN6699656

CCL8 Protein**2** Images[Go to Product page](#)

Overview

Quantity:	100 µg
Target:	CCL8
Origin:	Human
Source:	Escherichia coli (E. coli)
Protein Type:	Recombinant
Application:	SDS-PAGE (SDS)

Product Details

Purpose:	Human Monocyte Chemotactic Protein-2 (CCL8) Recombinant Protein
Purification:	Monocyte Chemotactic protein-2 (CCL8) purity was determined to be greater than 98% as determined by HpLC, analysis by UV-Spectroscopy at 280nm, and by reducing and non-reducing SDS-pAGE.
Purity:	98,00%
Endotoxin Level:	Measured by LAL is typically ≤ 1 EU/µg protein.
Biological Activity Comment:	The activity is determined by the ability to chemoattract human PBMCs and is typically in the range of 10-100 ng/mL.

Target Details

Target:	CCL8
Alternative Name:	CCL8 (CCL8 Products)
Background:	Synonyms: HC14, Monocyte chemoattractant protein 2, Monocyte chemotactic protein 2 (MCP-

Target Details

2), Small-inducible cytokine A8

Background: Monocyte Chemotactic Protein 2 (MCP-2), also known as CCL8, is implicated in allergic responses through its ability to activate mast cells, eosinophils, and basophils. MCP-2 is known to signal through several G protein-coupled receptors including, CCR1, CCR2B, and CCR5. Recombinant human MCP-2 is a non-glycosylated protein, containing 76 amino acids, with a molecular weight of 8.9 kDa.

UniProt: [P80075](#)

Application Details

Application Notes: Other: User Optimized
Application_Note: Monocyte Chemotactic Protein-2 Recombinant Protein has been tested by SDS-PAGE and biological activity and is suitable as a control for polyclonal or monoclonal anti-Monocyte Chemotactic Protein-2 in immunological assays.

Comment: Suggested_Applications: Cellular Assay
Other_Performance_Data:

Restrictions: For Research Use only

Handling

Format: Lyophilized

Reconstitution: Reconstitution_Buffer: Restore with deionized water (or equivalent)
Reconstitution_Volume: 100 µL

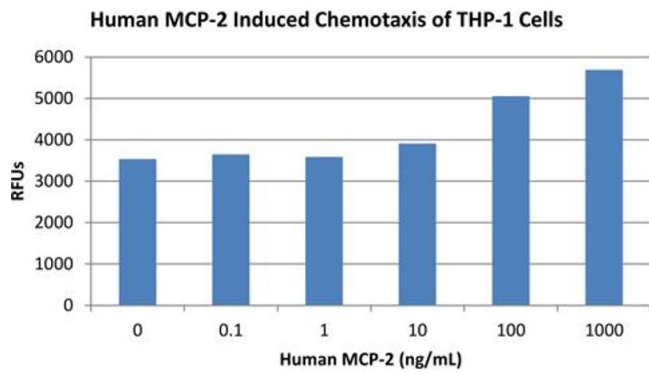
Buffer: Buffer: 0.1 % Trifluoroacetic acid
Stabilizer: None

Preservative: Without preservative

Storage: 4 °C,-20 °C

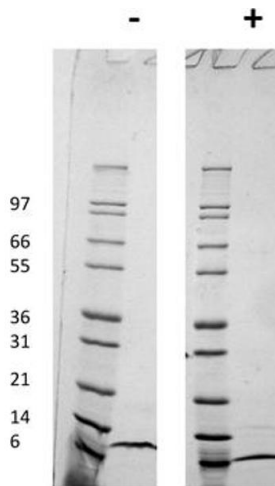
Storage Comment: Store vial at 4° C prior to restoration. Dilute only prior to immediate use. Maintain sterility. This product DOES NOT contain preservative. DO NOT VORTEX. We recommend adding a carrier protein such as HSA or BSA to 0.1% (i.e. 1.0 mg/mL). For best results aliquot contents and freeze at -20° C or colder. Avoid cycles of freezing and thawing. Centrifuge vial before each opening to dislodge contents from the cap and to clarify if contents are not clear after standing at room temperature.

Expiry Date: 6 months



SDS-PAGE

Image 1. SDS-PAGE of Human Monocyte Chemotactic Protein-2 (CCL8) Recombinant Protein Bioactivity of Human Monocyte Chemotactic Protein-2 (CCL8) Recombinant Protein. Human THP-1 cells were allowed to migrate to Human MCP-2 at (0, 0.1, 1, 10, 100 and 1000 ng/mL). After 45 minutes, cells that migrated were counted using a luminescent substrate and displayed on the bar graph above. Significant increases in migration over basal levels were seen in response to Human MCP-2 starting at 100 ng/mL. This value is comparable to expected ranges of a chemotactic response of primary human monocytes.



SDS-PAGE

Image 2. SDS-PAGE of Human Monocyte Chemotactic Protein-2 (CCL8) Recombinant Protein SDS-PAGE of Rat Monocyte Chemotactic Protein-1 (CCL2) Recombinant Protein. Lane 1: Molecular weight marker. Lane 2: 1 µg Rat MCP-1 in non-reducing conditions . Lane 3: 1 µg Rat MCP-1 in reducing conditions (+). Rat MCP-1 has a predicted MW of 14.1 kDa.