

Datasheet for ABIN669966  
**anti-MERTK antibody (AA 501-600)**[Go to Product page](#)

## 1 Image

## Overview

|                      |  |
|----------------------|--|
| Quantity:            | 100 µL   |
| Target:              | MERTK  |
| Binding Specificity: | AA 501-600   |
| Reactivity:          | Mouse  |
| Host:                | Rabbit   |
| Clonality:           | Polyclonal   |
| Conjugate:           | This MERTK antibody is un-conjugated                               |
| Application:         | ELISA, Immunohistochemistry (Paraffin-embedded Sections) (IHC (p)) |

## Product Details

|                       |  |
|-----------------------|--|
| Immunogen:            | KLH conjugated synthetic peptide derived from human of human MERTK |
| Isotype:              | IgG  |
| Cross-Reactivity:     | Mouse  |
| Predicted Reactivity: | Human,Rat  |
| Purification:         | Purified by Protein A.   |

## Target Details

|                   |   |
|-------------------|---|
| Target:           | MERTK   |
| Alternative Name: | MERTK ( <a href="#">MERTK Products</a> )  |
| Background:       | Synonyms: MER, RP38, c-Eyk, c-mer, Tyro12, Tyrosine-protein kinase Mer, Proto-oncogene c- |

## Target Details

Mer, Receptor tyrosine kinase MerTK, MERTK

Background: Receptor tyrosine kinase that transduces signals from the extracellular matrix into the cytoplasm by binding to several ligands including LGALS3, TUB, TULP1 or GAS6. Regulates many physiological processes including cell survival, migration, differentiation, and phagocytosis of apoptotic cells (efferocytosis). Ligand binding at the cell surface induces autophosphorylation of MERTK on its intracellular domain that provides docking sites for downstream signaling molecules. Following activation by ligand, interacts with GRB2 or PLCG2 and induces phosphorylation of MAPK1, MAPK2, FAK/PTK2 or RAC1. MERTK signaling plays a role in various processes such as macrophage clearance of apoptotic cells, platelet aggregation, cytoskeleton reorganization and engulfment. Functions in the retinal pigment epithelium (RPE) as a regulator of rod outer segments fragments phagocytosis. Plays also an important role in inhibition of Toll-like receptors (TLRs)-mediated innate immune response by activating STAT1, which selectively induces production of suppressors of cytokine signaling SOCS1 and SOCS3.

Gene ID: 10461

UniProt: [Q12866](#)

Pathways: [RTK Signaling](#)

## Application Details

Application Notes: ELISA 1:500-1000  
IHC-P 1:200-400

Restrictions: For Research Use only

## Handling

Format: Liquid

Concentration: 1 µg/µL

Buffer: 0.01M TBS( pH 7.4) with 1 % BSA, 0.02 % Proclin300 and 50 % Glycerol.

Preservative: ProClin

Precaution of Use: This product contains ProClin: a POISONOUS AND HAZARDOUS SUBSTANCE, which should be handled by trained staff only.

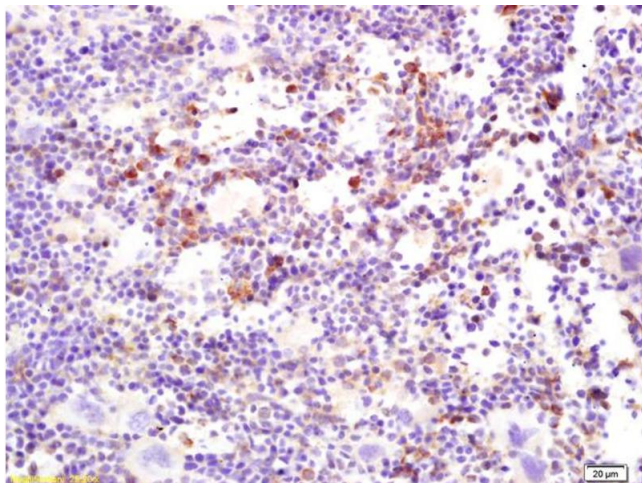
Storage: 4 °C,-20 °C

## Handling

Storage Comment: Shipped at 4°C. Store at -20°C for one year. Avoid repeated freeze/thaw cycles.

Expiry Date: 12 months

## Images



### Immunohistochemistry

**Image 1.** Formalin-fixed and paraffin embedded mouse spleen labeled with Rabbit Anti C-Mer/MERTK Polyclonal Antibody, Unconjugated (ABIN669966) at 1:200 followed by conjugation to the secondary antibody and DAB staining