



[Go to Product page](#)

Datasheet for ABIN6699720

G-CSF Protein

2 Images

Overview

Quantity:	2 µg
Target:	G-CSF (CSF3)
Origin:	Mouse
Source:	Escherichia coli (E. coli)
Protein Type:	Recombinant

Product Details

Characteristics:	CSF-3, MGI-1G, GM-CSFβ, pluripoietin
Purification:	Granulocyte Colony Stimulating Factor purity was determined to be greater than 98% as determined by analysis by UV-Spectroscopy at 280nm and by reducing and non-reducing SDS-pAGE.
Endotoxin Level:	Low endotoxin

Target Details

Target:	G-CSF (CSF3)
Alternative Name:	G-CSF (CSF3 Products)
UniProt:	P09920
Pathways:	Cellular Response to Molecule of Bacterial Origin, Regulation of Actin Filament Polymerization

Application Details

Application Notes:	Application Note: Granulocyte Colony Stimulating Factor Recombinant Protein is suitable as a
--------------------	--

Application Details

control for polyclonal or monoclonal anti-Granulocyte Colony Stimulating Factor in immunological assays.

Other Performance Data: Endotoxin Level: Measured by kinetic LAL analysis and is typically ≤ 1 EU/ μg protein. Biologic Activity: The activity is determined by the dose-dependent proliferation of mouse M-NFS-60 cells and is typically less than 10-60 ng/mL.

Restrictions: For Research Use only

Handling

Format: Lyophilized

Reconstitution: Reconstitution Volume: 2 μL (2-20 μL)
Reconstitution Buffer: Restore with deionized water (or equivalent)

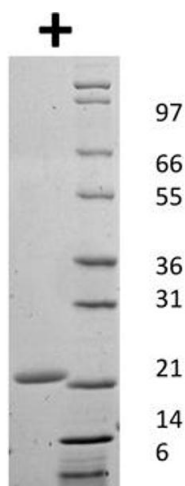
Buffer: Buffer: 0.01 M Sodium Citrate, pH 3.0
Stabilizer: None

Preservative: Without preservative

Storage: RT, 4 °C, -20 °C

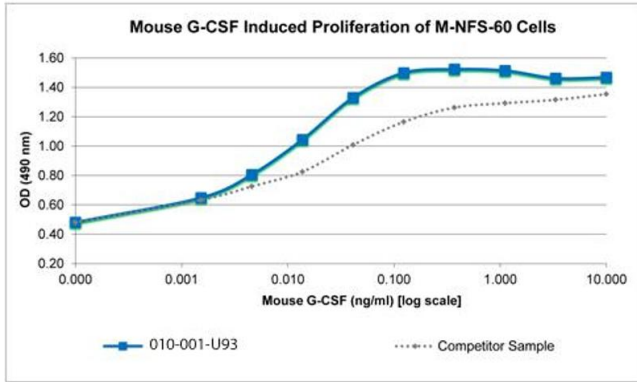
Expiry Date: 6 months

Images



SDS-PAGE

Image 1. SDS-PAGE of Mouse Granulocyte Colony Stimulating Factor Recombinant Protein. Lane 1: 1 μg Mouse G-CSF in reducing conditions (+). Lane 2: Molecular weight marker. Mouse G-CSF has a predicted MW of 19 kDa.



SDS-PAGE

Image 2. SDS-PAGE of Mouse Granulocyte Colony Stimulating Factor Recombinant Protein Bioactivity of Mouse Granulocyte Colony Stimulating Factor Recombinant Protein. Serial dilutions of Mouse G-CSF, starting at 10 ng/mL, were added to NFS-60 cells. After 69 hours, cell proliferation was measured and the linear portion of the curve was used to calculate the ED50. The ED50 of Murine G-CSF is 8-12 pg/mL. This value is comparable with the typical expected range of 10-60 pg/mL.