

Datasheet for ABIN6699726

CTGF Protein**2** Images[Go to Product page](#)

Overview

Quantity:	100 µg
Target:	CTGF
Origin:	Human
Source:	Escherichia coli (E. coli)
Protein Type:	Recombinant
Application:	SDS-PAGE (SDS)

Product Details

Purpose:	Human Connective Tissue Growth Factor Recombinant Protein
Purification:	Connective Tissue Growth Factor purity was determined to be greater than 98% as determined by analysis by UV-Spectroscopy at 280nm and by reducing and non-reducing SDS-pAGE.
Purity:	98,00%
Endotoxin Level:	Measured by LAL is typically ≤ 1 EU/µg protein.
Biological Activity Comment:	The activity is determined by the dose-dependent stimulation of HUVEC proliferation and is typically 1-2 µg/mL.

Target Details

Target:	CTGF
Alternative Name:	CTGF (CTGF Products)
Background:	Synonyms: CCN2, HCS24, IGFBP8 Background: Connective Tissue Growth Factor (CTGF) is a member of cysteine rich regulatory

Target Details

proteins that are both mitogenic and chemotactic. Each protein has an Insulin-like Growth Factor (IGF)-binding domain, a thrombospondin type 1 domain and cysteine knot region. CTGF has multiple effects on development and differentiation. Recombinant human CTGF is a non-glycosylated protein, containing 98 amino acids, with a molecular weight of 11.2 kDa.

UniProt: [P29279](#)

Pathways: [Regulation of Lipid Metabolism by PPARalpha](#), [Positive Regulation of Endopeptidase Activity](#), [Growth Factor Binding](#)

Application Details

Application Notes: Other: User Optimized
Application_Note: Connective Tissue Growth Factor Recombinant Protein has been tested by SDS-PAGE and biological assay and is suitable as a control for polyclonal or monoclonal anti-Connective Tissue Growth Factor in immunological assays.

Comment: Suggested_Applications: Cellular Assay
Other_Performance_Data:

Restrictions: For Research Use only

Handling

Format: Lyophilized

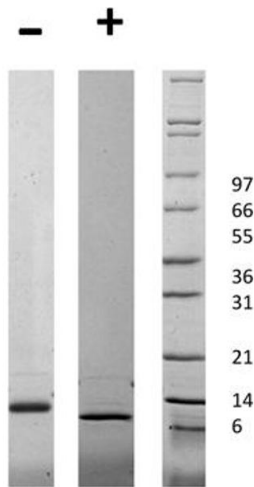
Reconstitution: Reconstitution_Buffer: Restore with deionized water (or equivalent)
Reconstitution_Volume: 100 µL

Buffer: Buffer: 0.1 % Trifluoroacetic acid
Stabilizer: None

Preservative: Without preservative

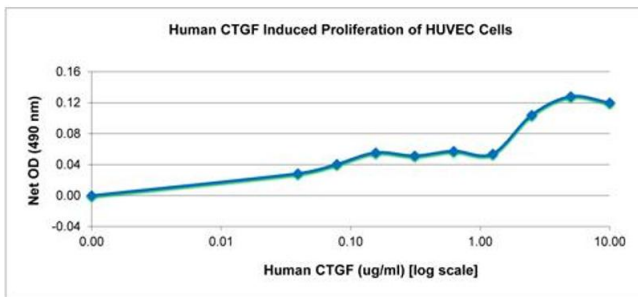
Storage: 4 °C,-20 °C

Storage Comment: Store vial at 4° C prior to restoration. Dilute only prior to immediate use. Maintain sterility. This product DOES NOT contain preservative. DO NOT VORTEX. We recommend adding a carrier protein such as HSA or BSA to 0.1% (i.e. 1.0 mg/mL). For best results aliquot contents and freeze at -20° C or colder. Avoid cycles of freezing and thawing. Centrifuge vial before each opening to dislodge contents from the cap and to clarify if contents are not clear after standing at room temperature.



SDS-PAGE

Image 1. SDS-PAGE of Human Connective Tissue Growth Factor Recombinant Protein. Lane 1: 1 µg Human CTGF in non-reducing conditions. Lane 2: 1 µg Human CTGF in reducing conditions (+). Lane 3: Molecular weight marker. Human CTGF has a predicted MW of 11.2 kDa.



SDS-PAGE

Image 2. SDS-PAGE of Human Connective Tissue Growth Factor Recombinant Protein. Bioactivity of Human Connective Tissue Growth Factor Recombinant Protein. Serial dilutions of Human CTGF, starting at 10 ug/mL, were added to HUVECs cultured without EGF. Cell proliferation was measured after 87 hours and the linear portion of the curve was used to calculate the ED50. The ED50 of Human CTGF is 1.1-1.7 ug/mL. This value is comparable with the typical expected range of 1-2 ug/mL.