



[Go to Product page](#)

Datasheet for ABIN6700007

## IL-11 Protein

### 2 Images

#### Overview

Quantity:	2 µg
Target:	IL-11 (IL11)
Origin:	Human
Source:	Escherichia coli (E. coli)
Protein Type:	Recombinant

#### Product Details

Characteristics:	AGIF (Adipogenesis Inhibitory Factor), Oprelvekin
Purification:	Interleukin-11 purity was determined to be greater than 95% as determined by analysis by UV-Spectroscopy at 280nm and by reducing and non-reducing SDS-PAGE.
Endotoxin Level:	Low endotoxin

#### Target Details

Target:	IL-11 (IL11)
Alternative Name:	IL-11 ( <a href="#">IL11 Products</a> )
UniProt:	<a href="#">P20809</a>
Pathways:	<a href="#">JAK-STAT Signaling</a> , <a href="#">Negative Regulation of Hormone Secretion</a>

#### Application Details

Application Notes:	Application Note: Interleukin-11 Recombinant Protein is suitable as a control for polyclonal or monoclonal anti-Interleukin-11 in immunological assays.
--------------------	---

## Application Details

Other Performance Data: Endotoxin Level: Measured by kinetic LAL analysis and is typically  $\leq 1$  EU/ $\mu$ g protein. Biologic Activity: The activity is determined by the dose-dependent proliferation of T11 or TF-1 cells is typically less than 2.5 ng/mL or 10 ng/mL or  $4 \times 10^5$  units/mg or  $1 \times 10^5$  units/mg.

Restrictions: For Research Use only

## Handling

Format: Lyophilized

Reconstitution: Reconstitution Volume: 2  $\mu$ L (2-20  $\mu$ L)

Reconstitution Buffer: Restore with deionized water (or equivalent)

Buffer: Buffer: 0.1 % Trifluoroacetic acid

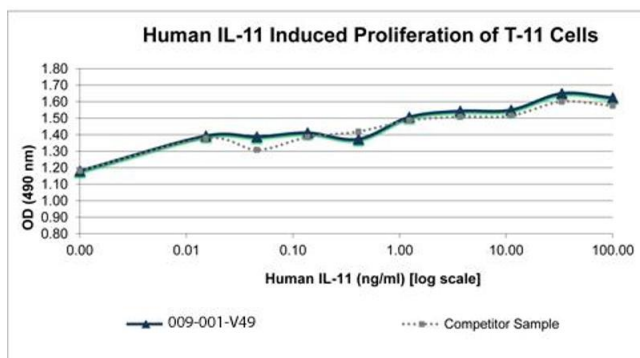
Stabilizer: None

Preservative: Without preservative

Storage: RT, 4 °C, -20 °C

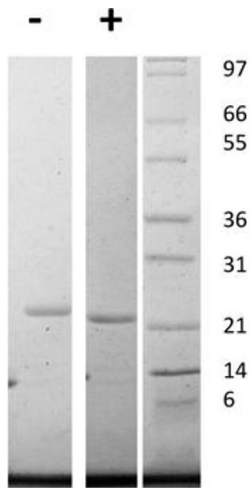
Expiry Date: 6 months

## Images



## SDS-PAGE

**Image 1.** SDS-PAGE of Human Interleukin-11 Recombinant Protein Bioactivity of Human Interleukin-11 Recombinant Protein. Serial dilutions of Human IL-11 (starting at 100 ng/mL) were added to T-11 cells growing the presence of 2 ng/mL IL-6. After 91 hours, cell proliferation was measured and the linear portion of the curve was used to calculate the ED50. The ED50 of Human IL-11 is between 0.35-0.52 ng/mL. This value is comparable to the typically expected to be less than 2 ng/mL.



### SDS-PAGE

**Image 2.** SDS-PAGE of Human Interleukin-11 Recombinant Protein SDS-PAGE of Human Interleukin-11 Recombinant Protein. Lane 1: 1  $\mu$ g Human IL-11 in non-reducing conditions . Lane 2: 1  $\mu$ g Human IL-11 in reducing conditions (+). Lane 3: Molecular weight marker. Human IL-11 has a predicted MW of 19 kDa.