

Datasheet for ABIN6700019

IL12 Protein**2** Images[Go to Product page](#)

Overview

Quantity:	2 µg
Target:	IL12
Origin:	Mouse
Source:	Escherichia coli (E. coli)
Protein Type:	Recombinant

Product Details

Characteristics:	NKSF, CLMF
Purification:	Interleukin-12 purity was determined to be greater than 95% as determined by reducing and non-reducing SDS-PAGE.
Endotoxin Level:	Low endotoxin

Target Details

Target:	IL12
Alternative Name:	IL-12 (IL12 Products)
UniProt:	P43432
Pathways:	JAK-STAT Signaling , TLR Signaling , Cellular Response to Molecule of Bacterial Origin , Regulation of Leukocyte Mediated Immunity , Positive Regulation of Immune Effector Process , Activated T Cell Proliferation , Cancer Immune Checkpoints , Inflammasome

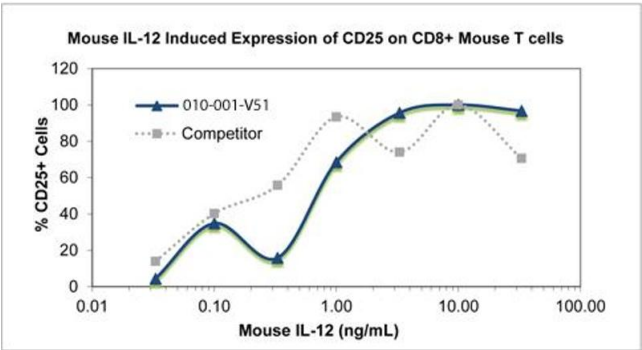
Application Details

Application Notes:	Application Note: Interleukin-12 Recombinant Protein is suitable as a control for polyclonal or monoclonal anti-Interleukin-12 in immunological assays. Other Performance Data: Endotoxin Level: Measured by kinetic LAL analysis and is typically ≤ 1 EU/ μ g protein. Biologic Activity: The activity is determined by the induced expression of CD25 on CD8+ mouse T cells and is typically detectable starting at 0.1 ng/mL.
Restrictions:	For Research Use only

Handling

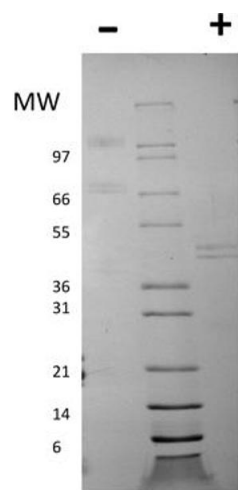
Format:	Lyophilized
Reconstitution:	Reconstitution Volume: 2 μ L (2-20 μ L) Reconstitution Buffer: Restore with deionized water (or equivalent)
Buffer:	Stabilizer: None
Preservative:	Without preservative
Storage:	RT, 4 °C, -20 °C
Expiry Date:	6 months

Images



SDS-PAGE

Image 1. SDS-PAGE of Mouse Interleukin-12 Recombinant Protein Bioactivity of Mouse Interleukin-12 Recombinant Protein. Serial dilutions of Mouse IL-12 (starting at 33 ng/mL) were added to mouse splenic T cells. After 72 hours, cells were stained to analyze surface CD8 and CD25. The linear portion of the curve was used to calculate the ED50. The ED50 of Mouse IL-12 is between 1-1.8 ng/mL. This value is comparable to the typically expected to be less than 2 ng/mL.



SDS-PAGE

Image 2. SDS-PAGE of Mouse Interleukin-12 Recombinant Protein SDS-PAGE of Mouse Interleukin-12 Recombinant Protein. Lane 1: 1 µg Mouse IL-12 in non-reducing conditions . Lane 2: Molecular weight marker. Lane 3: 1 µg Mouse IL-12 in reducing conditions (+). Mouse IL-12 is a heterodimer comprised of one 40 kDa subunit and one 35 kDa subunit. The total predicted MW is 70 kDa.