

Datasheet for ABIN6700091

**IL-25 Protein****2** Images[Go to Product page](#)

## Overview

Quantity:	5 µg
Target:	IL-25 (IL25)
Origin:	Human
Source:	Escherichia coli (E. coli)
Protein Type:	Recombinant
Application:	SDS-PAGE (SDS)

## Product Details

Purpose:	Human Interleukin-17E (IL-25) Recombinant Protein
Purification:	Interleukin-17E (IL-25) purity was determined to be greater than 95% as determined by HpLC, analysis by UV-Spectroscopy at 280nm, and by reducing and non-reducing SDS-pAGE.
Purity:	95,00%
Endotoxin Level:	Measured by LAL is typically $\leq 1$ EU/µg protein.
Biological Activity Comment:	The activity is determined by the dose-dependant production of IL-8 from cultured human PBMCs and is typically 10-100 ng/mL.

## Target Details

Target:	IL-25 (IL25)
Alternative Name:	IL25 ( <a href="#">IL25 Products</a> )
Background:	Synonyms: IL17E Background: Interleukin-17E (IL-17E), also commonly called IL-25, is a pro-inflammatory

## Target Details

---

cytokine member of a six-species family of proteins (IL-17A-17F). IL-17F stimulates secretion of IL-8 and induces activation of NF- $\kappa$ B by binding to the receptor IL-17RB. Recombinant human IL-17E is a non-glycosylated, disulfide-linked, homodimer, containing two 145 amino acid chains, with a total molecular weight of 35.5 kDa.

UniProt: [Q9H293](#)

## Application Details

---

Application Notes: Other: User Optimized  
Application\_Note: Interleukin-17E Recombinant Protein has been tested by SDS-PAGE and biological activity and is suitable as a control for polyclonal or monoclonal anti-Interleukin-17E in immunological assays.

Comment: Suggested\_Applications: Cellular Assay  
Other\_Performance\_Data:

Restrictions: For Research Use only

## Handling

---

Format: Lyophilized

Reconstitution: Reconstitution\_Buffer: 0.01M HCl  
Reconstitution\_Volume: 5  $\mu$ L (5-50  $\mu$ L)

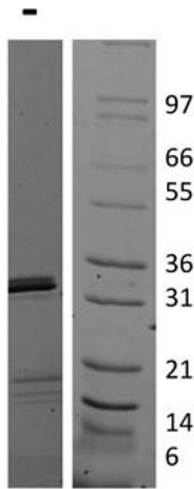
Buffer: Buffer: 0.1 % Trifluoroacetic acid  
Stabilizer: None

Preservative: Without preservative

Storage: 4 °C, -20 °C

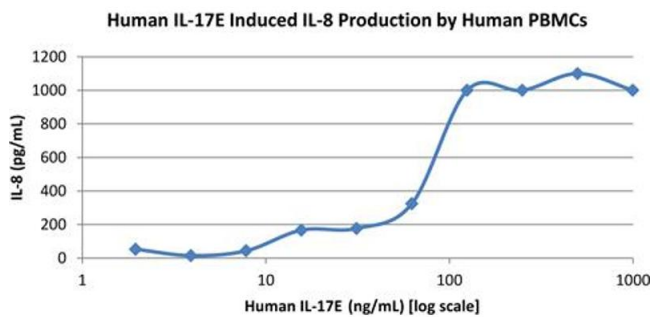
Storage Comment: Store vial at 4° C prior to restoration. Dilute only prior to immediate use. Maintain sterility. This product DOES NOT contain preservative. DO NOT VORTEX. We recommend adding a carrier protein such as HSA or BSA to 0.1% (i.e. 1.0 mg/mL). For best results aliquot contents and freeze at -20° C or colder. Avoid cycles of freezing and thawing. Centrifuge vial before each opening to dislodge contents from the cap and to clarify if contents are not clear after standing at room temperature.

Expiry Date: 6 months



### SDS-PAGE

**Image 1.** SDS-PAGE of Human Interleukin-17E (IL-25) Recombinant Protein. Lane 1: 1 µg Human IL-17E in non-reducing conditions. Lane 2: Molecular weight marker. Human IL-17E is a homodimer with a predicted total MW of 33.8 kDa.



### SDS-PAGE

**Image 2.** SDS-PAGE of Human Interleukin-17E (IL-25) Recombinant Protein Bioactivity of Human Interleukin-17E (IL-25) Recombinant Protein. Human PBMCs were cultured with 0 to 1000 ng/mL Human IL-17E. Human IL-8 production was measured after 48 hours and the linear portion of the curve was used to calculate the ED50. The ED50 of Human IL-17E is 62-94 ng/mL. This value is comparable to the expected range of 10-100 ng/mL.