

Datasheet for ABIN6700122

## IL-31 Protein

### 2 Images

[Go to Product page](#)

### Overview

Quantity:	10 µg
Target:	IL-31 (IL31)
Origin:	Mouse
Source:	Escherichia coli (E. coli)
Protein Type:	Recombinant

### Product Details

Characteristics:	Interleukin-31, IL-31, Interleukin 32
Purification:	Interleukin IL-31 purity was determined to be greater than 97% as determined by analysis by UV-Spectroscopy at 280nm and by reducing and non-reducing SDS-pAGE.
Endotoxin Level:	Low endotoxin

### Target Details

Target:	IL-31 (IL31)
Alternative Name:	IL-31 ( <a href="#">IL31 Products</a> )
UniProt:	<a href="#">Q6EAL8</a>

### Application Details

Application Notes:	Application Note: Interleukin IL-31 Recombinant Protein is suitable as a control for polyclonal or monoclonal anti-Interleukin IL-31 in immunological assays. Other Performance Data: Endotoxin Level: Measured by kinetic LAL analysis and is typically $\leq 1$
--------------------	--

## Application Details

EU/ $\mu$ g protein. Biologic Activity: The activity is determined by the dose dependent production of IL-8 from human PBMCs and is typically less than 25 ng/mL.

Restrictions: For Research Use only

## Handling

Format: Lyophilized

Reconstitution: Reconstitution Volume: 10  $\mu$ L (10-100  $\mu$ L)  
Reconstitution Buffer: Restore with deionized water (or equivalent)

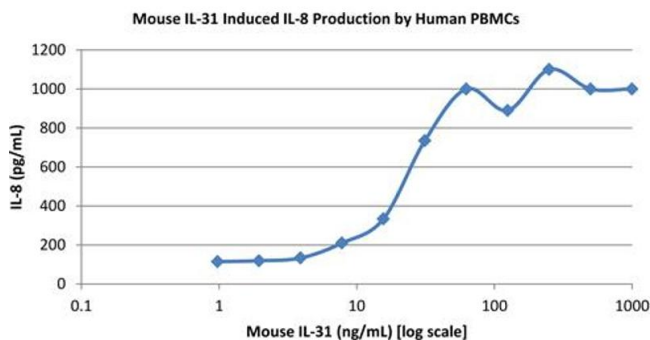
Buffer: Buffer: 0.01 M Sodium Phosphate, pH 7.5

Preservative: Without preservative

Storage: RT, 4  $^{\circ}$ C, -20  $^{\circ}$ C

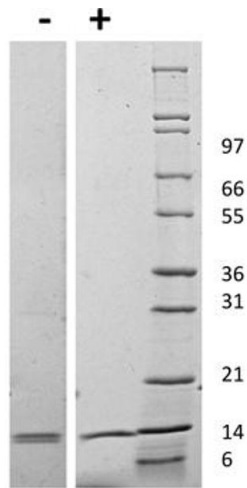
Expiry Date: 6 months

## Images



### SDS-PAGE

**Image 1.** SDS-PAGE of Mouse Interleukin IL-31 Recombinant Protein Bioactivity of Mouse Interleukin IL-31 Recombinant Protein. Human PBMCs were cultured with 0 to 1000 ng/mL Mouse IL-31. Human IL-8 production was measured after 48 hours and the linear portion of the curve was used to calculate the ED50. The ED50 of Mouse IL-31 is 16-24 ng/mL.



### SDS-PAGE

**Image 2.** SDS-PAGE of Mouse Interleukin IL-31 Recombinant Protein. Lane 1: 1  $\mu$ g Mouse IL-31 in non-reducing conditions. Lane 2: 1  $\mu$ g Mouse IL-31 in reducing conditions (+). Lane 3: Molecular weight marker. Mouse IL-31 has a predicted MW of 15.7 kDa.