



[Go to Product page](#)

Datasheet for ABIN6700200
KIT Ligand Protein (KITLG)

2 Images

Overview

Quantity:	10 µg
Target:	KIT Ligand (KITLG)
Origin:	Rat
Source:	Escherichia coli (E. coli)
Protein Type:	Recombinant

Product Details

Characteristics:	c-Kit Ligand, Hematopoietic growth factor KL, KL, Steel Factor, Stem cell factor (SCF), Mast cell growth factor(MGF)
Purification:	Stem Cell Factor purity was determined to be greater than 98% as determined by analysis by UV-Spectroscopy at 280nm and by reducing and non-reducing SDS-pAGE.
Endotoxin Level:	Low endotoxin

Target Details

Target:	KIT Ligand (KITLG)
Alternative Name:	SCF (KITLG Products)
UniProt:	P21581
Pathways:	RTK Signaling , Fc-epsilon Receptor Signaling Pathway , EGFR Signaling Pathway , Neurotrophin Signaling Pathway

Application Details

Application Notes: Application Note: Stem Cell Factor Recombinant Protein is suitable as a control for polyclonal or monoclonal anti-Stem Cell Factor in immunological assays.

Other Performance Data: Endotoxin Level: Measured by kinetic LAL analysis and is typically ≤ 1 EU/ μ g protein. Biologic Activity: The activity is determined by its ability to induce proliferation of TF-1 cells and is typically less than 10 ng/mL.

Restrictions: For Research Use only

Handling

Format: Lyophilized

Reconstitution: Reconstitution Volume: 10 μ L (10-100 μ L)
Reconstitution Buffer: 0.01M acetic acid

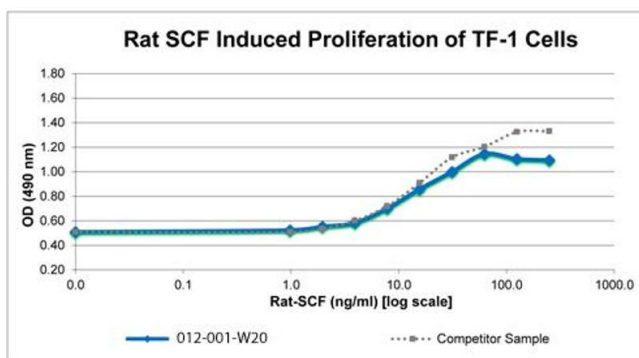
Buffer: Buffer: 0.1 % Trifluoroacetic acid

Preservative: Without preservative

Storage: RT, 4 °C, -20 °C

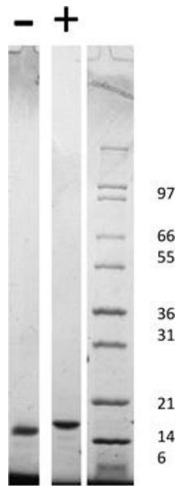
Expiry Date: 6 months

Images



SDS-PAGE

Image 1. SDS-PAGE of Rat Stem Cell Factor Recombinant Protein Bioactivity of Rat Stem Cell Factor Recombinant Protein. Serial dilutions of Rat SCF, starting at 250 ng/mL, were added to TF-1 cells growing in GM-SCF free media. Cell proliferation was measure after 63 hours and the linear portion of the curve was us used to calculate the ED50. The ED50 of Rat SCF is between 10-15 ng/mL. This value is comparable to the typical expected range of 20-40 ng/mL.



SDS-PAGE

Image 2. SDS-PAGE of Rat Stem Cell Factor Recombinant Protein SDS-PAGE of Rat Stem Cell Factor Recombinant Protein. Lane 1: 1 μ g Rat SCF in non-reducing conditions . Lane 2: 1 μ g Rat SCF in reducing conditions (+). Lane 3: Molecular weight marker. Rat SCF has a predicted MW of 18.4 kDa.