

Datasheet for ABIN6700211

Leptin Protein (LEP)[Go to Product page](#)**1** Image

Overview

Quantity:	1000 µg
Target:	Leptin (LEP)
Origin:	Human
Source:	Escherichia coli (E. coli)

Product Details

Cross-Reactivity:	Human
Characteristics:	Leptin, LEP cytokine, Obesity factor, Obese protein
Purification:	Purity was determined to be greater than 95% by analysis by RP-HPLC and by reducing and non-reducing SDS-PAGE.
Endotoxin Level:	Low endotoxin

Target Details

Target:	Leptin (LEP)
Alternative Name:	Leptin (LEP Products)
UniProt:	P41159
Pathways:	JAK-STAT Signaling , AMPK Signaling , Hormone Transport , Peptide Hormone Metabolism , Hormone Activity , Negative Regulation of Hormone Secretion , Regulation of Carbohydrate Metabolic Process , Feeding Behaviour , Monocarboxylic Acid Catabolic Process

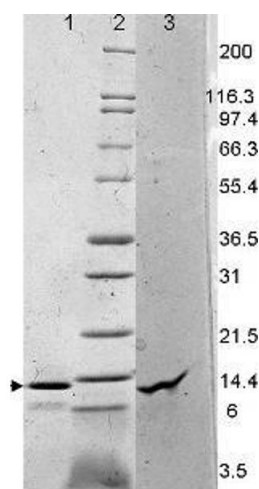
Application Details

Application Notes:	Application Note: Leptin is suitable as a control for polyclonal or monoclonal anti-Leptin in immunological assays. Other Performance Data: Biological Activity: Human Recombinant Leptin is fully biologically active when compared to standard. The ED50, calculated by the leptin-dependent stimulation of Human OB-R transfected mouse BaF/3 proliferation, is 1.36 ng/mL. Endotoxin Level: Measured by LAL is <0.01 ng/μg or <0.1EU/μg.
Restrictions:	For Research Use only

Handling

Format:	Lyophilized
Reconstitution:	Reconstitution Volume: 1.0 mL Reconstitution Buffer: Restore with deionized water (or equivalent)
Concentration:	1.0 mg/mL
Buffer:	Buffer: 0.1 % Trifluoroacetic acid
Preservative:	Without preservative
Storage:	RT, 4 °C, -20 °C
Expiry Date:	6 months

Images



SDS-PAGE

Image 1. Leptin Human Recombinant Protein - SDS-PAGE. SDS-PAGE of Leptin Human Recombinant Protein. Lane 1: Leptin, unreduced. Lane 2: prestained MW markers. Lane 3: Leptin, reduced. Load: 1 μg per lane. Predicted/Observed size: 16 kDa, ~15 kDa for Leptin. Other band(s): none.