

Datasheet for ABIN6700212

Leptin Protein (LEP)[Go to Product page](#)**1** Image

Overview

Quantity:	1000 µg
Target:	Leptin (LEP)
Origin:	Mouse
Source:	Escherichia coli (E. coli)

Product Details

Cross-Reactivity:	Mouse (Murine)
Characteristics:	Leptin, LEP cytokine, Obesity factor, Obese protein
Purification:	Purity was determined to be greater than 95% by analysis by RP-HPLC and by reducing and non-reducing SDS-PAGE.
Endotoxin Level:	Low endotoxin

Target Details

Target:	Leptin (LEP)
Alternative Name:	Leptin (LEP Products)
UniProt:	P41160
Pathways:	JAK-STAT Signaling , AMPK Signaling , Hormone Transport , Peptide Hormone Metabolism , Hormone Activity , Negative Regulation of Hormone Secretion , Regulation of Carbohydrate Metabolic Process , Feeding Behaviour , Monocarboxylic Acid Catabolic Process

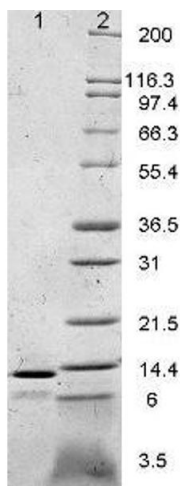
Application Details

Application Notes:	Application Note: Leptin is suitable as a control for polyclonal or monoclonal anti-Leptin in immunological assays. Other Performance Data: Biological Activity: Mouse Recombinant Leptin is fully biologically active when compared to standard. The ED50, calculated by the dose-dependent stimulation of Human OB-R transfected mouse BaF/3 proliferation, is 0.52 ng/mL. Endotoxin Level: Measured by LAL is <0.01 ng/μg or <0.1EU/μg.
Restrictions:	For Research Use only

Handling

Format:	Lyophilized
Reconstitution:	Reconstitution Buffer: Restore with deionized water (or equivalent)
Concentration:	0.1 mg/mL
Buffer:	Buffer: 0.01 M Sodium Phosphate, pH 7.5
Preservative:	Without preservative
Storage:	RT,4 °C,-20 °C
Expiry Date:	6 months

Images



SDS-PAGE

Image 1. Leptin Mouse Cytokine - SDS-PAGE. SDS-PAGE of Leptin Mouse Cytokine. Lane 1: Leptin, reduced. Lane 2: prestained MW markers. Load: 1 μg per lane. Predicted/Observed size: 16 kDa, ~14 kDa for Leptin. Other band(s): none.