

Datasheet for ABIN6700214

Leptin Protein (LEP)**2** Images[Go to Product page](#)

Overview

Quantity:	1000 µg
Target:	Leptin (LEP)
Origin:	Rat
Source:	Escherichia coli (E. coli)
Protein Type:	Recombinant

Product Details

Characteristics:	Obesity protein
Purification:	Leptin purity was determined to be greater than 95% as determined by analysis by UV-Spectroscopy at 280nm and by reducing and non-reducing SDS-PAGE.
Endotoxin Level:	Low endotoxin

Target Details

Target:	Leptin (LEP)
Alternative Name:	Leptin (LEP Products)
UniProt:	P50596
Pathways:	JAK-STAT Signaling , AMPK Signaling , Hormone Transport , Peptide Hormone Metabolism , Hormone Activity , Negative Regulation of Hormone Secretion , Regulation of Carbohydrate Metabolic Process , Feeding Behaviour , Monocarboxylic Acid Catabolic Process

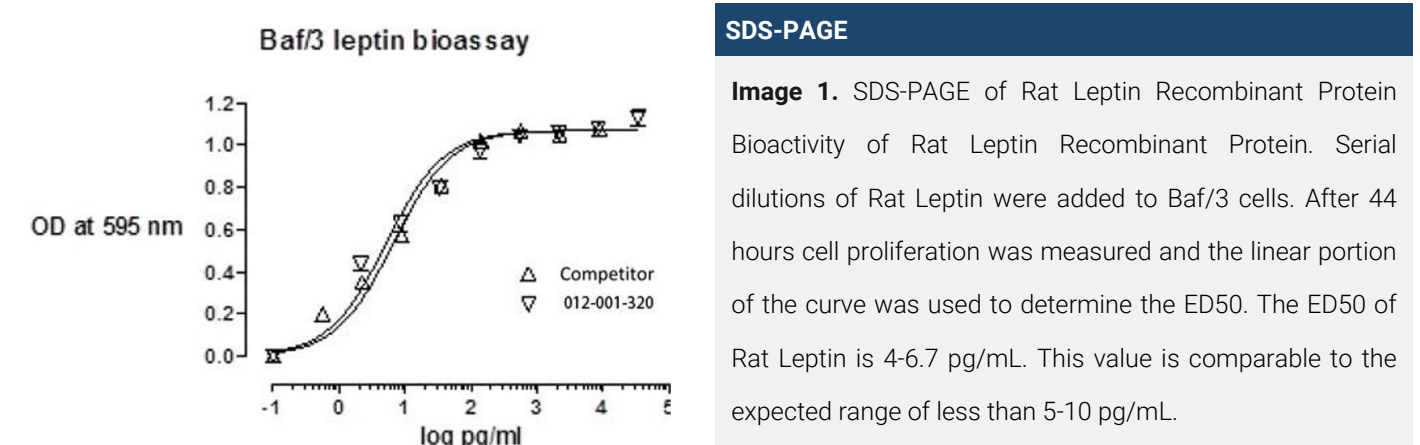
Application Details

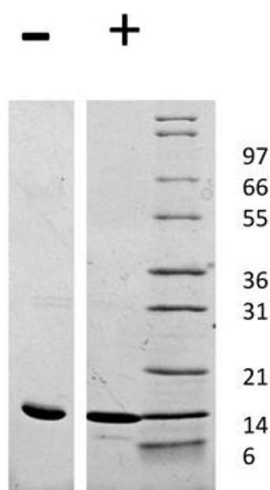
Application Notes:	Application Note: Leptin Recombinant Protein is suitable as a control for polyclonal or monoclonal anti-Leptin in immunological assays. Other Performance Data: Endotoxin Level: Measured by kinetic LAL analysis and is typically ≤ 1 EU/ μ g protein. Biologic Activity: The activity is currently undetermined.
Restrictions:	For Research Use only

Handling

Format:	Lyophilized
Reconstitution:	Reconstitution Volume: 1.0 mL Reconstitution Buffer: Restore with deionized water (or equivalent)
Buffer:	Buffer: 0.1 % Trifluoroacetic acid
Preservative:	Without preservative
Storage:	RT,4 °C,-20 °C
Expiry Date:	6 months

Images





SDS-PAGE

Image 2. SDS-PAGE of Rat Leptin Recombinant Protein
SDS-PAGE of Rat Leptin Recombinant Protein. Lane 1: 1 µg Rat Leptin in non-reducing conditions . Lane 2: 1 µg Rat Leptin in reducing conditions (+). Lane 3: Molecular weight marker. Rat Leptin has a predicted MW of 16.2 kDa.