

Datasheet for ABIN6700457

**RELM alpha Protein**[Go to Product page](#)**1** Image

## Overview

Quantity:	25 µg
Target:	RELM alpha
Origin:	Mouse
Source:	Escherichia coli (E. coli)
Protein Type:	Recombinant
Application:	SDS-PAGE (SDS)

## Product Details

Purpose:	Mouse RELM alpha Recombinant Protein
Purification:	RELM alpha purity was determined to be greater than 98% as determined by HpLC, analysis by UV-Spectroscopy at 280nm, and by reducing and non-reducing SDS-pAGE.
Purity:	98,00%
Endotoxin Level:	Measured by LAL is typically $\leq 1$ EU/µg protein.
Biological Activity Comment:	A standard activity has not been determined.

## Target Details

Target:	RELM alpha
Alternative Name:	Retnla ( <a href="#">RELM alpha Products</a> )
Background:	Synonyms: Cysteine-rich secreted protein A12-gamma, Cysteine-rich secreted protein FIZZ1, FIZZ1, Hypoxia-induced mitogenic factor, Parasite-induced macrophage novel gene 1 protein, RELMalpha

## Target Details

---

Background: Resistin-Like Molecule-alpha, or RELM- $\alpha$ , is a cytokine member to a unique family of proteins including Relm- $\beta$  and Resistin. Relm- $\alpha$  and Resistin are secreted by adipocytes, where as Relm- $\beta$  is secreted by intestinal epithelial cells. All members of the family share a high conserved C-terminal region with 10 Cysteine residues. Recombinant mouse RELM- $\alpha$  is a non-glycosylated protein, containing 88 amino acids, with a molecular weight of 10 kDa.

UniProt: [Q9EP95](#)

## Application Details

---

Application Notes: Other: User Optimized  
Application\_Note: RELM alpha Recombinant Protein has been tested by SDS-PAGE and is suitable as a control for polyclonal or monoclonal anti-RELM alpha in immunological assays.

Restrictions: For Research Use only

## Handling

---

Format: Lyophilized

Reconstitution: Reconstitution\_Buffer: Restore with deionized water (or equivalent)  
Reconstitution\_Volume: 25  $\mu$ L (25-250  $\mu$ L)

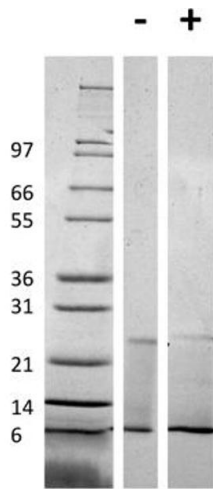
Buffer: Buffer: 0.01 M Sodium Phosphate, pH 7.5  
Stabilizer: None

Preservative: Without preservative

Storage: 4 °C, -20 °C

Storage Comment: Store vial at 4° C prior to restoration. Dilute only prior to immediate use. Maintain sterility. This product DOES NOT contain preservative. DO NOT VORTEX. We recommend adding a carrier protein such as HSA or BSA to 0.1% (i.e. 1.0 mg/mL). For best results aliquot contents and freeze at -20° C or colder. Avoid cycles of freezing and thawing. Centrifuge vial before each opening to dislodge contents from the cap and to clarify if contents are not clear after standing at room temperature.

Expiry Date: 6 months



### SDS-PAGE

**Image 1.** SDS-PAGE of Mouse RELM alpha Recombinant Protein SDS-PAGE of Mouse RELM alpha Recombinant Protein. Lane 1: Molecular weight marker. Lane 2: 1 µg Mouse Relm alpha in non-reducing conditions . Lane 3: 1 µg Mouse Relm alpha in reducing conditions (+). Mouse Relm alpha has a predicted MW of 10 kDa.