

Datasheet for ABIN6700472

RETNLB Protein**1** Image[Go to Product page](#)

Overview

Quantity:	5 µg
Target:	RETNLB
Origin:	Mouse
Source:	Escherichia coli (E. coli)
Protein Type:	Recombinant

Product Details

Characteristics:	Cysteine-rich secreted protein A12-beta, Cysteine-rich secreted protein FIZZ2, FIZZ2, RELMbeta
Purification:	RELM beta purity was determined to be greater than 97% as determined by analysis by UV-Spectroscopy at 280nm and by reducing and non-reducing SDS-PAGE.
Endotoxin Level:	Low endotoxin

Target Details

Target:	RETNLB
Alternative Name:	RELM beta (RETNLB Products)
UniProt:	Q99P86
Pathways:	Hormone Activity

Application Details

Application Notes:	Application Note: RELM beta Recombinant Protein is suitable as a control for polyclonal or monoclonal anti-RELM beta in immunological assays.
--------------------	---

Application Details

Other Performance Data: Endotoxin Level: Measured by kinetic LAL analysis and is typically ≤ 1 EU/ μ g protein. Biologic Activity: A standard activity has not been determined.

Restrictions: For Research Use only

Handling

Format: Lyophilized

Reconstitution: Reconstitution Volume: 5 μ L (5-50 μ L)
Reconstitution Buffer: Restore with deionized water (or equivalent)

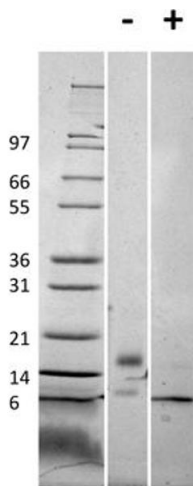
Buffer: Buffer: 0.1 % Trifluoroacetic acid
Stabilizer: mannitol

Preservative: Without preservative

Storage: RT, 4 °C, -20 °C

Expiry Date: 6 months

Images



SDS-PAGE

Image 1. SDS-PAGE of Mouse RELM beta Recombinant Protein. Lane 1: Molecular weight marker. Lane 2: 1 μ g Mouse Relm beta in non-reducing conditions. Lane 3: 1 μ g Mouse Relm beta in reducing conditions (+). Mouse Relm beta is a predicted homodimer with a predicted MW of 18 kDa.