

Datasheet for ABIN6700579

**SDF1 beta Protein****2** Images[Go to Product page](#)

## Overview

Quantity:	10 µg
Target:	SDF1 beta (SDF1b)
Origin:	Mouse
Source:	Escherichia coli (E. coli)
Protein Type:	Recombinant

## Product Details

Characteristics:	12-O-tetradecanoylphorbol 13-acetate repressed protein 1 (TPAR1), C-X-C motif chemokine 12, Pre-B cell growth-stimulating factor (PBSF), Thymic lymphoma cell-stimulating factor (TLSF)
Purification:	Stromal Cell-Derived Factor-1 beta (CXCL12) purity was determined to be greater than 97% as determined by HPLC, analysis by UV-Spectroscopy at 280nm, and by reducing and non-reducing SDS-PAGE.
Endotoxin Level:	Low endotoxin

## Target Details

Target:	SDF1 beta (SDF1b)
Alternative Name:	SDF-1 Beta/CXCL12 ( <a href="#">SDF1b Products</a> )
UniProt:	<a href="#">Q4FJL5</a>

## Application Details

Application Notes:	Application Note: Stromal Cell-Derived Factor-1 beta Recombinant Protein is suitable as a
--------------------	---

Application Details

control for polyclonal or monoclonal anti-Stromal Cell-Derived Factor-1 beta in immunological assays.

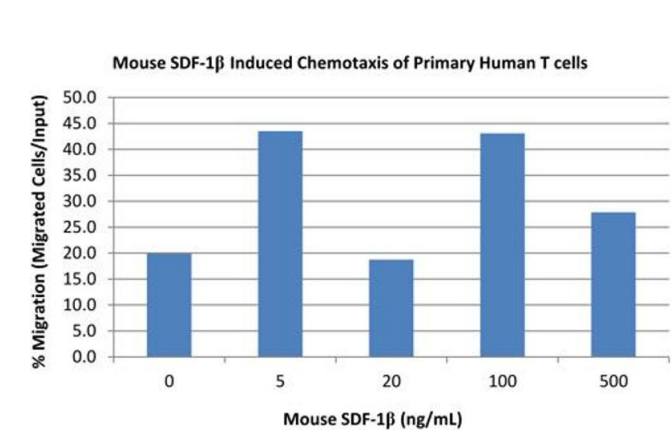
Other Performance Data: Endotoxin Level: Measured by kinetic LAL analysis and is typically  $\leq 1$  EU/ $\mu$ g protein. Biologic Activity: The activity is determined by the ability to chemoattract human T cells at 10-75 ng/mL.

Restrictions: For Research Use only

Handling

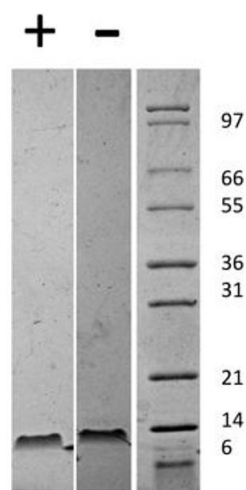
Format:	Lyophilized
Reconstitution:	Reconstitution Volume: 10 $\mu$ L (10-100 $\mu$ L) Reconstitution Buffer: Restore with deionized water (or equivalent)
Buffer:	Buffer: 0.1 % Trifluoroacetic acid
Preservative:	Without preservative
Storage:	RT,4 °C,-20 °C
Expiry Date:	6 months

Images



**SDS-PAGE**

**Image 1.** SDS-PAGE of Mouse Stromal Cell-Derived Factor-1 beta (CXCL12) Recombinant Protein Bioactivity of Mouse Stromal Cell-Derived Factor-1 beta (CXCL12) Recombinant Protein. Human T cells were allowed to migrate to Mouse SDF-1 $\beta$  at (0, 5, 20, 100, 500 ng/mL). After 4 hours, cells that migrated were counted using a luminescent substrate and displayed on the bar graph above. Significant increases in migration over basal levels were seen in response to Mouse SDF-1 $\beta$  detectable starting at between 5-100 ng/mL.



SDS-PAGE

**Image 2.** SDS-PAGE of Mouse Stromal Cell-Derived Factor-1 beta (CXCL12) Recombinant Protein SDS-PAGE of Mouse Stromal Cell-Derived Factor-1 beta (CXCL12) Recombinant Protein. Lane 1: 1 µg Mouse SDF-1 beta in reducing conditions (+). Lane 2: 1 µg Mouse SDF-1 beta in non-reducing conditions . Lane 3: Molecular weight marker. Mouse SDF-1 beta is predicted to be a 8.5 kDa.