



[Go to Product page](#)

Datasheet for ABIN670296

anti-Cyclin B1 antibody (AA 271-433)

4 Images

8 Publications

Overview

Quantity:	100 µL
Target:	Cyclin B1 (CCNB1)
Binding Specificity:	AA 271-433
Reactivity:	Human, Mouse, Rat, Cow, Chicken
Host:	Rabbit
Clonality:	Polyclonal
Conjugate:	This Cyclin B1 antibody is un-conjugated
Application:	Western Blotting (WB), ELISA, Flow Cytometry (FACS), Immunohistochemistry (Paraffin-embedded Sections) (IHC (p)), Immunofluorescence (Cultured Cells) (IF (cc)), Immunofluorescence (Paraffin-embedded Sections) (IF (p)), Immunohistochemistry (Frozen Sections) (IHC (fro))

Product Details

Immunogen:	KLH conjugated synthetic peptide derived from human CCNB1
Isotype:	IgG
Cross-Reactivity:	Chicken, Cow, Human, Mouse, Rat
Predicted Reactivity:	Cow
Purification:	Purified by Protein A.

Target Details

Target:	Cyclin B1 (CCNB1)
---------	-------------------

Target Details

Alternative Name:	Cyclin B1 (CCNB1 Products)
Background:	<p>Synonyms: CycB1, Cycb-4, Cycb-5, Ccnb1-rs1, Cycb1-rs1, Ccnb1-rs13, G2/mitotic-specific cyclin-B1, Ccnb1, Ccn-2, Cycb</p> <p>Background: The protein encoded by this gene is a regulatory protein involved in mitosis. The gene product complexes with p34(cdc2) to form the maturation-promoting factor (MPF). Two alternative transcripts have been found, a constitutively expressed transcript and a cell cycle-regulated transcript, that is expressed predominantly during G2/M phase. The different transcripts result from the use of alternate transcription initiation sites. [provided by RefSeq, Jul 2008].</p>
Gene ID:	268697
UniProt:	P14635
Pathways:	Cell Division Cycle , AMPK Signaling , Mitotic G1-G1/S Phases , M Phase

Application Details

Application Notes:	WB 1:300-5000 ELISA 1:500-1000 FCM 1:20-100 IHC-P 1:200-400 IHC-F 1:100-500 IF(IHC-P) 1:50-200 IF(IHC-F) 1:50-200 IF(ICC) 1:50-200
Restrictions:	For Research Use only

Handling

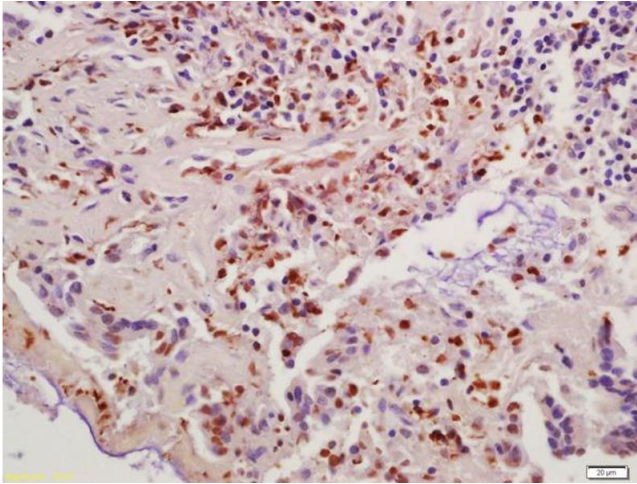
Format:	Liquid
Concentration:	1 µg/µL
Buffer:	0.01M TBS(pH 7.4) with 1 % BSA, 0.02 % Proclin300 and 50 % Glycerol.
Preservative:	ProClin
Precaution of Use:	This product contains ProClin: a POISONOUS AND HAZARDOUS SUBSTANCE, which should be handled by trained staff only.

Handling

Storage:	4 °C,-20 °C
Storage Comment:	Shipped at 4°C. Store at -20°C for one year. Avoid repeated freeze/thaw cycles.
Expiry Date:	12 months

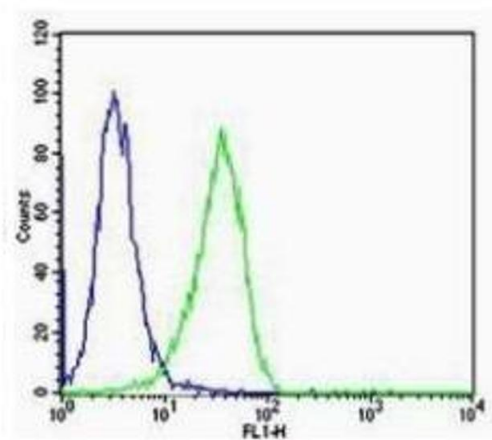
Publications

- Product cited in:
- Wang, Wei, Xiao, Xue, Du, Liu, Xie: "Methamphetamine induces hepatotoxicity via inhibiting cell division, arresting cell cycle and activating apoptosis: In vivo and in vitro studies." in: **Food and chemical toxicology : an international journal published for the British Industrial Biological Research Association**, Vol. 105, pp. 61-72, (2017) ([PubMed](#)).
- Ghate, Das, Chaudhuri, Panja, Mandal: "Sundew plant, a potential source of anti-inflammatory agents, selectively induces G2/M arrest and apoptosis in MCF-7 cells through upregulation of p53 and Bax/Bcl-2 ratio." in: **Cell death discovery**, Vol. 2, pp. 15062, (2016) ([PubMed](#)).
- Qu, Zou, Zhang, Sheng, Wang, Wang, Wang, Ji: "Chelidonine induces mitotic slippage and apoptotic-like death in SGC-7901 human gastric carcinoma cells." in: **Molecular medicine reports**, Vol. 13, Issue 2, pp. 1336-44, (2016) ([PubMed](#)).
- Zhang, Pan, Xu, Niu, Ma, Xu: "Interleukin 18 augments growth ability via NF- κ B and p38/ATF2 pathways by targeting cyclin B1, cyclin B2, cyclin A2, and Bcl-2 in BRL-3A rat liver cells." in: **Gene**, Vol. 563, Issue 1, pp. 45-51, (2015) ([PubMed](#)).
- Wang, Wang: "Studying the relationship between cell cycle and Alzheimer's disease by gold nanoparticle probes." in: **Analytical biochemistry**, Vol. 489, pp. 32-7, (2015) ([PubMed](#)).
- There are more publications referencing this product on: [Product page](#)



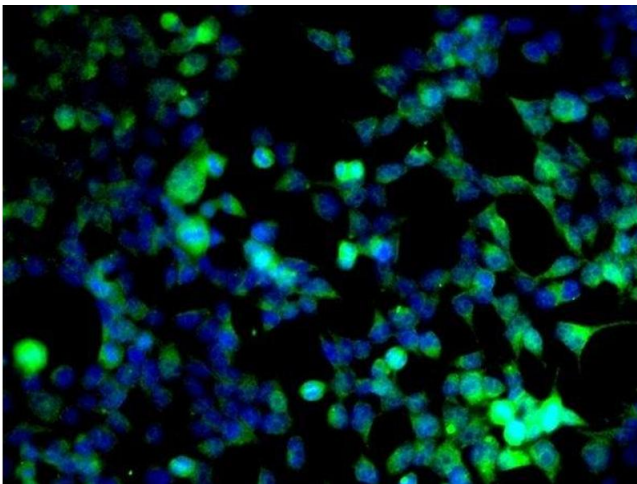
Immunohistochemistry

Image 1. Formalin-fixed and paraffin embedded human colon carcinoma labeled with Anti-Cyclin B1 Polyclonal Antibody, Unconjugated (ABIN670296) at 1:200 followed by conjugation to the secondary antibody and DAB staining



Flow Cytometry

Image 2. HeLa cells probed with Rabbit Anti-Cyclin B1 Polyclonal Antibody Alexa Fluor 488 Conjugated Secondary.



Immunofluorescence (Cultured Cells)

Image 3. Image provided by One World Lab validation program. HEK293 cells probed with Rabbit Anti-Cyclin B1 Polyclonal Antibody at 1:50 for 60 minutes at room temperature followed by Goat Anti-Rabbit IgG (H+L) Alexa Fluor 488 Conjugated secondary antibody.

Please check the [product details page](#) for more images. Overall 4 images are available for ABIN670296.