

Datasheet for ABIN670386

**anti-Collagen Type I antibody (AA 1321-1400)**

7 Images

16 Publications

[Go to Product page](#)

## Overview

Quantity:	100 µL
Target:	Collagen Type I (COL1)
Binding Specificity:	AA 1321-1400
Reactivity:	Human, Rat, Mouse, Rabbit, Dog, Fish
Host:	Rabbit
Clonality:	Polyclonal
Conjugate:	This Collagen Type I antibody is un-conjugated
Application:	ELISA, Western Blotting (WB), Immunohistochemistry (Frozen Sections) (IHC (fro)), Immunohistochemistry (Paraffin-embedded Sections) (IHC (p)), Immunofluorescence (Paraffin-embedded Sections) (IF (p)), Immunofluorescence (Cultured Cells) (IF (cc)), Flow Cytometry (FACS)

## Product Details

Immunogen:	KLH conjugated synthetic peptide derived from human Collagen I C-terminal propeptide
Isotype:	IgG
Specificity:	This antibody is produced using a peptide that is found in the C-terminal propeptide region.
Cross-Reactivity:	Dog, Fish, Human, Mouse, Rabbit, Rat
Predicted Reactivity:	Cow, Sheep, Horse
Purification:	Purified by Protein A.

## Target Details

Target:	Collagen Type I (COL1)
Alternative Name:	Collagen 1 ( <a href="#">COL1 Products</a> )
Background:	<p>Synonyms: Collagen alpha-1(I) chain, Alpha-1 type I collagen, COL1A1, Pro-collagen 1.</p> <p>Background: This gene encodes the pro-alpha1 chains of type I collagen whose triple helix comprises two alpha1 chains and one alpha2 chain. Type I is a fibril-forming collagen found in most connective tissues and is abundant in bone, cornea, dermis and tendon. Mutations in this gene are associated with osteogenesis imperfecta types I-IV, Ehlers-Danlos syndrome type VIIA, Ehlers-Danlos syndrome Classical type, Caffey Disease and idiopathic osteoporosis. Reciprocal translocations between chromosomes 17 and 22, where this gene and the gene for platelet-derived growth factor beta are located, are associated with a particular type of skin tumor called dermatofibrosarcoma protuberans, resulting from unregulated expression of the growth factor. Two transcripts, resulting from the use of alternate polyadenylation signals, have been identified for this gene. Type I collagen levels have been linked to bone growth and formation. Levels of the C-terminal propeptide are indicative of collagen production in vivo. Elevated levels of C-terminal propeptide have been shown in diseases associated with high levels of bone turnover, including Pagets disease, hyperthyroidism, primary hyperparathyroidism and renal osteodystrophy. Slightly elevated levels of C-terminal propeptide have also been documented in some women in early menopause.</p>
Molecular Weight:	161kDa
Gene ID:	1277

## Application Details

Application Notes:	<p>WB 1:300-5000</p> <p>ELISA 1:500-1000</p> <p>FCM 1:20-100</p> <p>IHC-P 1:200-400</p> <p>IHC-F 1:100-500</p> <p>IF(IHC-P) 1:50-200</p> <p>IF(IHC-F) 1:50-200</p> <p>IF(ICC) 1:50-200</p>
Restrictions:	For Research Use only

## Handling

Format:	Liquid
Concentration:	1 µg/µL
Buffer:	0.01M TBS( pH 7.4) with 1 % BSA, 0.02 % Proclin300 and 50 % Glycerol.
Preservative:	ProClin
Precaution of Use:	This product contains ProClin: a POISONOUS AND HAZARDOUS SUBSTANCE, which should be handled by trained staff only.
Storage:	4 °C,-20 °C
Storage Comment:	Shipped at 4°C. Store at -20°C for one year. Avoid repeated freeze/thaw cycles.
Expiry Date:	12 months

## Publications

Product cited in: Yang, Shi, Wu, Li, Zhang, Li, Zhai, Jia, Dang: "Caffeic acid phenethyl ester up-regulates antioxidant levels in hepatic stellate cell line T6 via an Nrf2-mediated mitogen activated protein kinases pathway." in: **World journal of gastroenterology**, Vol. 23, Issue 7, pp. 1203-1214, (2017) ([PubMed](#)).

Tian, Li, Yang, Luo, Dai, Liu, Song, Zhang: "Orally administered simvastatin partially preserves lumbar vertebral bone mass but not integrity of intervertebral discs in ovariectomized rats." in: **Experimental and therapeutic medicine**, Vol. 13, Issue 3, pp. 877-884, (2017) ([PubMed](#)).

Yu, Liu, Sun, Wang, Wang, Zhao, Dai, Zhao, Zhang, Li, Han, Lu, Dong, Liu, Yu, Li: "Chronic obstructive sleep apnea promotes aortic remodeling in canines through miR-145/Smad3 signaling pathway." in: **Oncotarget**, Vol. 8, Issue 23, pp. 37705-37716, (2017) ([PubMed](#)).

Yang, Zhao, Wang, Liu, Ma, Huang, Liu: "Isolation and biological characterization of tendon-derived stem cells from fetal bovine." in: **In vitro cellular & developmental biology. Animal**, Vol. 52, Issue 8, pp. 846-56, (2017) ([PubMed](#)).

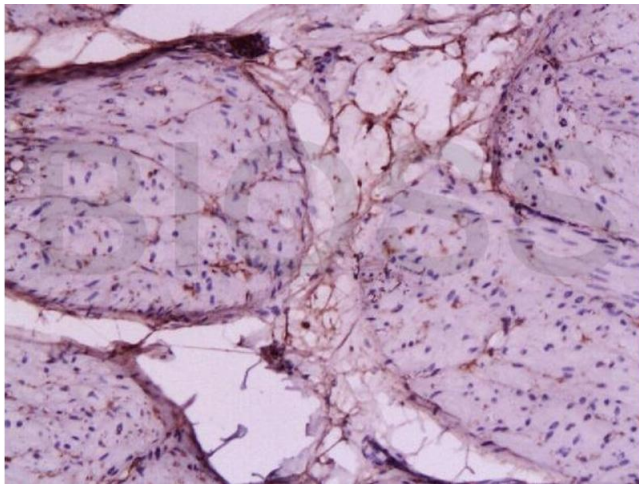
Long, Luo, Wang, Bates, Shetty: "Mash1-dependent Notch Signaling Pathway Regulates GABAergic Neuron-Like Differentiation from Bone Marrow-Derived Mesenchymal Stem Cells." in: **Aging and disease**, Vol. 8, Issue 3, pp. 301-313, (2017) ([PubMed](#)).

There are more publications referencing this product on: [Product page](#)



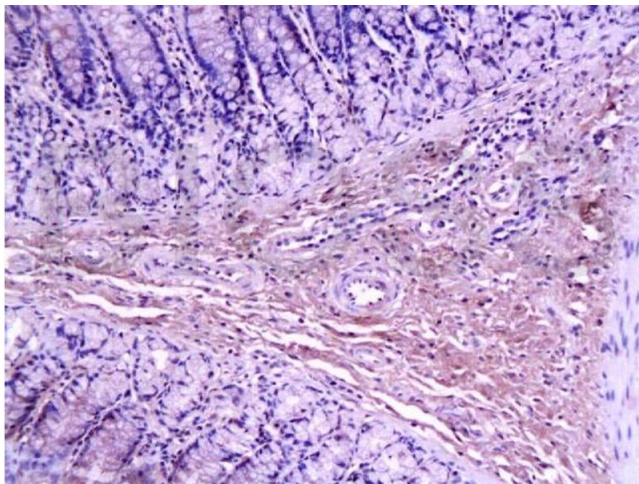
#### Immunofluorescence

**Image 1.** Formalin-fixed and paraffin-embedded rabbit meniscus tissue labeled with Anti-Collagen I Polyclonal Antibody, Unconjugated (ABIN670386) 1:300 followed by conjugation to the secondary PE antibody and DAB staining



#### Immunohistochemistry

**Image 2.** Formalin-fixed and paraffin-embedded dog bladder tissue labeled with Anti-Collagen I Polyclonal Antibody, Unconjugated (ABIN670386) 1:200 followed by conjugation to the secondary antibody and DAB staining



#### Immunohistochemistry

**Image 3.** Formalin-fixed and paraffin-embedded rat colon labeled with Anti-Collagen I Polyclonal Antibody, Unconjugated (ABIN670386) 1:200 followed by conjugation to the secondary antibody and DAB staining

Please check the [product details page](#) for more images. Overall 7 images are available for ABIN670386.