

Datasheet for ABIN670506
anti-VWF antibody (AA 701-800)[2 Images](#)[2 Publications](#)[Go to Product page](#)

Overview

Quantity:	100 µL
Target:	VWF
Binding Specificity:	AA 701-800
Reactivity:	Human, Rat, Mouse, Rabbit
Host:	Rabbit
Clonality:	Polyclonal
Conjugate:	This VWF antibody is un-conjugated
Application:	Immunohistochemistry (Paraffin-embedded Sections) (IHC (p)), Immunohistochemistry (Frozen Sections) (IHC (fro)), Immunofluorescence (Cultured Cells) (IF (cc)), Immunofluorescence (Paraffin-embedded Sections) (IF (p))

Product Details

Immunogen:	KLH conjugated synthetic peptide derived from human VWF
Isotype:	IgG
Cross-Reactivity:	Human, Mouse, Rabbit, Rat
Predicted Reactivity:	Dog,Cow,Pig
Purification:	Purified by Protein A.

Target Details

Target:	VWF
---------	-----

Target Details

Alternative Name:	VWF (VWF Products)
Background:	<p>Synonyms: VWD, F8VWF, von Willebrand factor, vWF</p> <p>Background: Important in the maintenance of hemostasis, it promotes adhesion of platelets to the sites of vascular injury by forming a molecular bridge between sub-endothelial collagen matrix and platelet-surface receptor complex GPIb-IX-V. Also acts as a chaperone for coagulation factor VIII, delivering it to the site of injury, stabilizing its heterodimeric structure and protecting it from premature clearance from plasma.</p>
Gene ID:	7450
UniProt:	P04275

Application Details

Application Notes:	<p>IHC-P 1:200-400</p> <p>IHC-F 1:100-500</p> <p>IF(IHC-P) 1:50-200</p> <p>IF(IHC-F) 1:50-200</p> <p>IF(ICC) 1:50-200</p>
Restrictions:	For Research Use only

Handling

Format:	Liquid
Concentration:	1 µg/µL
Buffer:	0.01M TBS(pH 7.4) with 1 % BSA, 0.02 % Proclin300 and 50 % Glycerol.
Preservative:	ProClin
Precaution of Use:	This product contains ProClin: a POISONOUS AND HAZARDOUS SUBSTANCE, which should be handled by trained staff only.
Storage:	4 °C,-20 °C
Storage Comment:	Shipped at 4°C. Store at -20°C for one year. Avoid repeated freeze/thaw cycles.
Expiry Date:	12 months

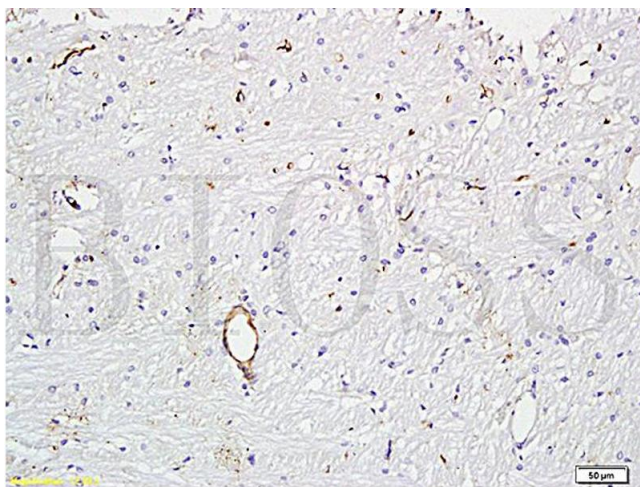
Publications

Product cited in:	Hsu, Roan, Wang, Huang, Shih, Chen, Wu, Lam: "Hemodynamic, biological, and right ventricular
-------------------	--

functional changes following intraatrial shunt repair in patients with flow-induced pulmonary hypertension." in: **Congenital heart disease**, Vol. 12, Issue 4, pp. 533-539, (2017) ([PubMed](#)).

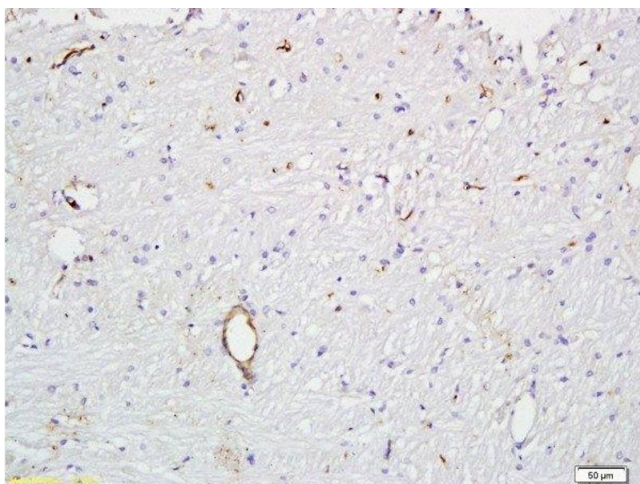
Du, Wang, Zhao, Li, Kong, Yang, Zhang: "Gradient nanofibrous chitosan/poly ϵ -caprolactone scaffolds as extracellular microenvironments for vascular tissue engineering." in: **Biomaterials**, Vol. 33, Issue 3, pp. 762-70, (2011) ([PubMed](#)).

Images



Immunohistochemistry

Image 1. Formalin-fixed and paraffin embedded rat brain tissue (ABIN670506) at 1:300 followed by conjugation to the secondary antibody and DAB staining.



Immunohistochemistry (Paraffin-embedded Sections)

Image 2. Formalin-fixed and paraffin embedded rat brain tissue at 1:300 followed by conjugation to the secondary antibody and DAB staining.