



[Go to Product page](#)

Datasheet for ABIN670611  
**anti-EpCAM antibody (AA 53-150)**

6 Images

### Overview

Quantity:	100 µL
Target:	EpCAM (EPCAM)
Binding Specificity:	AA 53-150
Reactivity:	Human, Mouse, Rat, Rabbit
Host:	Rabbit
Clonality:	Polyclonal
Conjugate:	This EpCAM antibody is un-conjugated
Application:	Western Blotting (WB), ELISA, Immunohistochemistry (Paraffin-embedded Sections) (IHC (p)), Immunohistochemistry (Frozen Sections) (IHC (fro)), Immunofluorescence (Paraffin-embedded Sections) (IF (p)), Immunofluorescence (Cultured Cells) (IF (cc))

### Product Details

Immunogen:	KLH conjugated synthetic peptide derived from mouse EpCAM
Isotype:	IgG
Cross-Reactivity:	Human, Mouse, Rabbit, Rat
Predicted Reactivity:	Dog,Cow,Pig
Purification:	Purified by Protein A.

### Target Details

Target:	EpCAM (EPCAM)
---------	---------------

## Target Details

---

Alternative Name:	EpCAM ( <a href="#">EPCAM Products</a> )
Background:	<p>Synonyms: EGP, Ly74, gp4, CD326, EGP-2, TROP1, Egp314, Ep-CAM, EpCAM1, Tacsd1, GA733-2, Tacstd1, Epithelial cell adhesion molecule, Epithelial glycoprotein 314, mEGP314, Protein 289A, Tumor-associated calcium signal transducer 1, Epcam</p> <p>Background: May act as a physical homophilic interaction molecule between intestinal epithelial cells (IECs) and intraepithelial lymphocytes (IELs) at the mucosal epithelium for providing immunological barrier as a first line of defense against mucosal infection. Plays a role in embryonic stem cells proliferation and differentiation. Up-regulates the expression of FABP5, MYC and cyclins A and E (By similarity).</p>
Gene ID:	17075
UniProt:	<a href="#">Q99JW5</a>

## Application Details

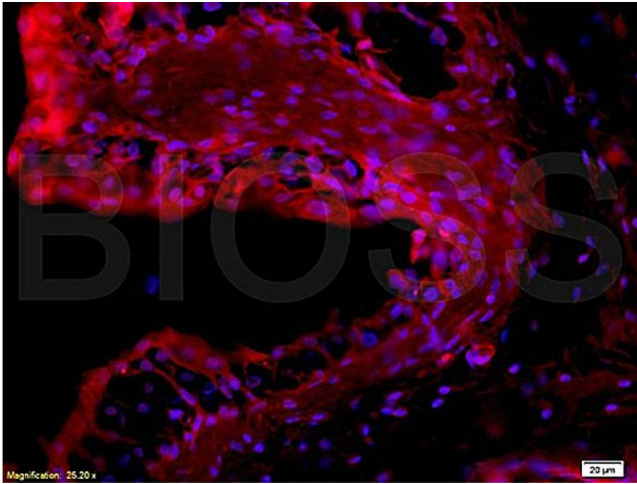
---

Application Notes:	WB 1:300-5000 ELISA 1:500-1000 IHC-P 1:200-400 IHC-F 1:100-500 IF(IHC-P) 1:50-200 IF(IHC-F) 1:50-200 IF(ICC) 1:50-200
Restrictions:	For Research Use only

## Handling

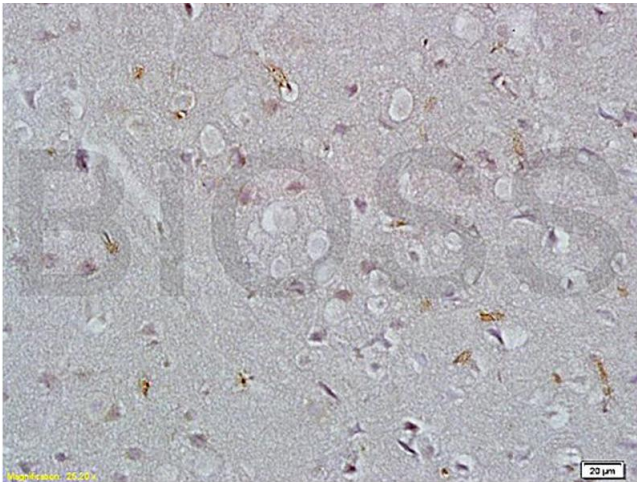
---

Format:	Liquid
Concentration:	1 µg/µL
Buffer:	0.01M TBS( pH 7.4) with 1 % BSA, 0.02 % Proclin300 and 50 % Glycerol.
Preservative:	ProClin
Precaution of Use:	This product contains ProClin: a POISONOUS AND HAZARDOUS SUBSTANCE, which should be handled by trained staff only.
Storage:	4 °C,-20 °C
Storage Comment:	Shipped at 4°C. Store at -20°C for one year. Avoid repeated freeze/thaw cycles.



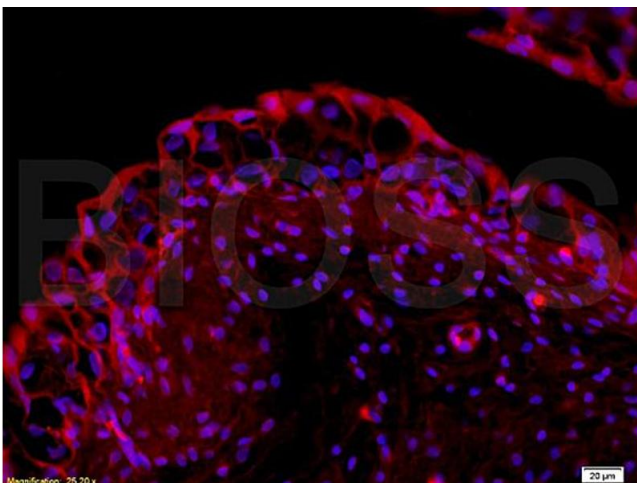
#### Immunofluorescence

**Image 1.** Formalin-fixed and paraffin embedded rabbit bladder tissue labeled with Rabbit Anti-EpCAM/CD326 Polyclonal Antibody (ABIN670611), Unconjugated at 1:200 followed by conjugation to the secondary antibody and DAB staining.



#### Immunohistochemistry

**Image 2.** Formalin-fixed and paraffin embedded rat brain tissue labeled with Rabbit Anti-EpCAM/CD326 Polyclonal Antibody (ABIN670611), Unconjugated at 1:200 followed by conjugation to the secondary antibody and DAB staining.



#### Immunofluorescence

**Image 3.** Formalin-fixed and paraffin embedded rabbit bladder tissue labeled with Rabbit Anti-EpCAM/CD326 Polyclonal Antibody (ABIN670611), Unconjugated at 1:200 followed by conjugation to the secondary antibody and DAB staining.

Please check the [product details page](#) for more images. Overall 6 images are available for ABIN670611.