



[Go to Product page](#)

Datasheet for ABIN670896
anti-CACUL1 antibody (AA 181-248)

1 Image

Overview

Quantity:	100 µL
Target:	CACUL1
Binding Specificity:	AA 181-248
Reactivity:	Human
Host:	Rabbit
Clonality:	Polyclonal
Conjugate:	This CACUL1 antibody is un-conjugated
Application:	ELISA, Immunofluorescence (Cultured Cells) (IF (cc)), Immunofluorescence (Paraffin-embedded Sections) (IF (p)), Immunohistochemistry (Frozen Sections) (IHC (fro)), Immunohistochemistry (Paraffin-embedded Sections) (IHC (p))

Product Details

Immunogen:	KLH conjugated synthetic peptide derived from human Cdk-associated cullin1
Isotype:	IgG
Cross-Reactivity:	Human
Predicted Reactivity:	Mouse,Rat,Dog,Cow,Pig,Chicken,Rabbit
Purification:	Purified by Protein A.

Target Details

Target:	CACUL1
---------	--------

Target Details

Alternative Name: Cdk-associated cullin1 ([CACUL1 Products](#))

Background: Synonyms: CAC1, C10orf46, CDK2-associated and cullin domain-containing protein 1, Cdk-associated cullin1, CACUL1
Background: Cell cycle associated protein capable of promoting cell proliferation through the activation of CDK2 at the G1/S phase transition.

Gene ID: 143384

UniProt: [Q86Y37](#)

Application Details

Application Notes: ELISA 1:500-1000
IHC-P 1:200-400
IHC-F 1:100-500
IF(IHC-P) 1:50-200
IF(IHC-F) 1:50-200
IF(ICC) 1:50-200

Restrictions: For Research Use only

Handling

Format: Liquid

Concentration: 1 µg/µL

Buffer: 0.01M TBS(pH 7.4) with 1 % BSA, 0.02 % Proclin300 and 50 % Glycerol.

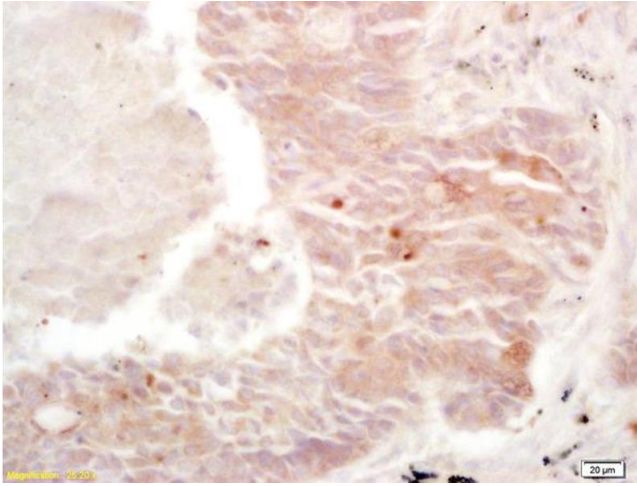
Preservative: ProClin

Precaution of Use: This product contains ProClin: a POISONOUS AND HAZARDOUS SUBSTANCE, which should be handled by trained staff only.

Storage: 4 °C, -20 °C

Storage Comment: Shipped at 4°C. Store at -20°C for one year. Avoid repeated freeze/thaw cycles.

Expiry Date: 12 months



Immunohistochemistry

Image 1. Formalin-fixed and paraffin embedded human lung carcinoma labeled with Rabbit Anti Cullin/C10orf46 Polyclonal Antibody, Unconjugated (ABIN670896) at 1:200 followed by conjugation to the secondary antibody and DAB staining