



[Go to Product page](#)

Datasheet for ABIN670956 anti-Citrulline antibody

1 Image

Overview

Quantity:	100 µL
Target:	Citrulline (CIT)
Host:	Rabbit
Clonality:	Polyclonal
Conjugate:	This Citrulline antibody is un-conjugated
Application:	ELISA, Immunohistochemistry (Paraffin-embedded Sections) (IHC (p))

Product Details

Immunogen:	KLH conjugated to Citrulline
Isotype:	IgG
Cross-Reactivity:	Rat
Cross-Reactivity (Details):	L-Citrulline
Purification:	Purified by Protein A.

Target Details

Target:	Citrulline (CIT)
Alternative Name:	L-Citrulline (CIT Products)
Target Type:	Amino Acid
Background:	Synonyms: L-2-Amino-5-ureidovaleric Acid, S-2-Amino-5-ureidopentanoic Acid. Background: The amino acid Citrulline is required to detoxify the liver from ammonia, which is a

Target Details

waste product of the body from oxidation. Citrulline promotes energy and assists with the immune system. This unusual amino acid is formed in the urea cycle by the addition of carbon dioxide and ammonia to ornithine. It is then combined with aspartic acid to form arginosuccinic acid, which later is metabolized into the amino acid arginine.

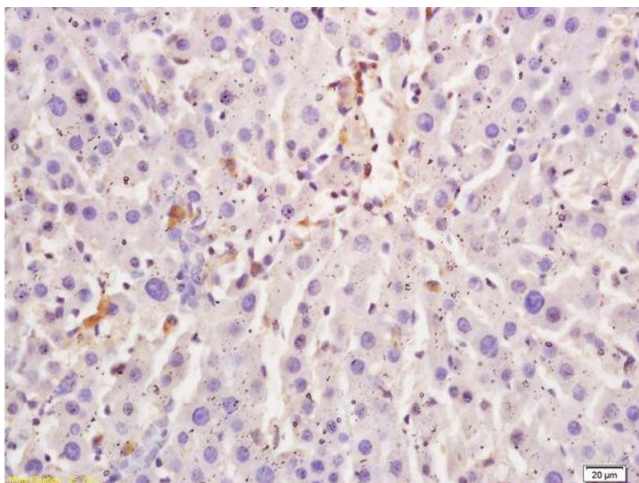
Application Details

Application Notes:	IHC-P 1:100-500 IF(IHC-P) 1:50-200
Restrictions:	For Research Use only

Handling

Format:	Liquid
Concentration:	1 µg/µL
Buffer:	0.01M TBS(pH 7.4) with 1 % BSA, 0.02 % Proclin300 and 50 % Glycerol.
Preservative:	Sodium azide
Precaution of Use:	This product contains Sodium azide: a POISONOUS AND HAZARDOUS SUBSTANCE, which should be handled by trained staff only.
Storage:	4 °C,-20 °C
Storage Comment:	Shipped at 4°C. Store at -20°C for one year. Avoid repeated freeze/thaw cycles.
Expiry Date:	12 months

Images



Immunohistochemistry

Image 1. Formalin-fixed and paraffin embedded rat liver tissue labeled with Anti L-Citrulline Polyclonal Antibody, Unconjugated (ABIN670956) at 1:200 followed by conjugation to the secondary antibody and DAB staining