

Datasheet for ABIN671016
anti-Cyclin D1 antibody (AA 61-110)

6 Images

15 Publications

[Go to Product page](#)

Overview

Quantity:	100 µL
Target:	Cyclin D1 (CCND1)
Binding Specificity:	AA 61-110
Reactivity:	Human, Rat, Mouse, Cow, Rabbit, Sheep
Host:	Rabbit
Clonality:	Polyclonal
Conjugate:	This Cyclin D1 antibody is un-conjugated
Application:	Western Blotting (WB), ELISA, Flow Cytometry (FACS), Immunohistochemistry (Paraffin-embedded Sections) (IHC (p)), Immunofluorescence (Cultured Cells) (IF (cc)), Immunohistochemistry (Frozen Sections) (IHC (fro)), Immunofluorescence (Paraffin-embedded Sections) (IF (p))

Product Details

Immunogen:	KLH conjugated synthetic peptide derived from mouse Cyclin D1
Isotype:	IgG
Cross-Reactivity:	Cow, Human, Mouse, Rabbit, Rat, Sheep
Predicted Reactivity:	Dog
Purification:	Purified by Protein A.

Target Details

Target:	Cyclin D1 (CCND1)
---------	-------------------

Target Details

Alternative Name:	Cyclin D1 (CCND1 Products)
Background:	<p>Synonyms: cD1, CycD1, Cyl-1, PRAD1, bcl-1, A132739, G1/S-specific cyclin-D1, Ccnd1</p> <p>Background: Regulatory component of the cyclin D1-CDK4 (DC) complex that phosphorylates and inhibits members of the retinoblastoma (RB) protein family including RB1 and regulates the cell-cycle during G(1)/S transition. Phosphorylation of RB1 allows dissociation of the transcription factor E2F from the RB/E2F complex and the subsequent transcription of E2F target genes which are responsible for the progression through the G(1) phase.</p> <p>Hypophosphorylates RB1 in early G(1) phase. Cyclin D-CDK4 complexes are major integrators of various mitogenenic and antimitogenic signals. Also substrate for SMAD3, phosphorylating SMAD3 in a cell-cycle-dependent manner and repressing its transcriptional activity. Component of the ternary complex, cyclin D1/CDK4/CDKN1B, required for nuclear translocation and activity of the cyclin D-CDK4 complex. Exhibits transcriptional corepressor activity with INSM1 on the NEUROD1 and INS promoters in a cell cycle-independent manner (By similarity).</p>
Gene ID:	12443
UniProt:	P25322
Pathways:	PI3K-Akt Signaling , Cell Division Cycle , Mitotic G1-G1/S Phases , ER-Nucleus Signaling

Application Details

Application Notes:	WB 1:300-5000 ELISA 1:500-1000 FCM 1:20-100 IHC-P 1:200-400 IHC-F 1:100-500 IF(IHC-P) 1:50-200 IF(IHC-F) 1:50-200 IF(ICC) 1:50-200
Restrictions:	For Research Use only

Handling

Format:	Liquid
Concentration:	1 µg/µL
Buffer:	0.01M TBS(pH 7.4) with 1 % BSA, 0.02 % Proclin300 and 50 % Glycerol.

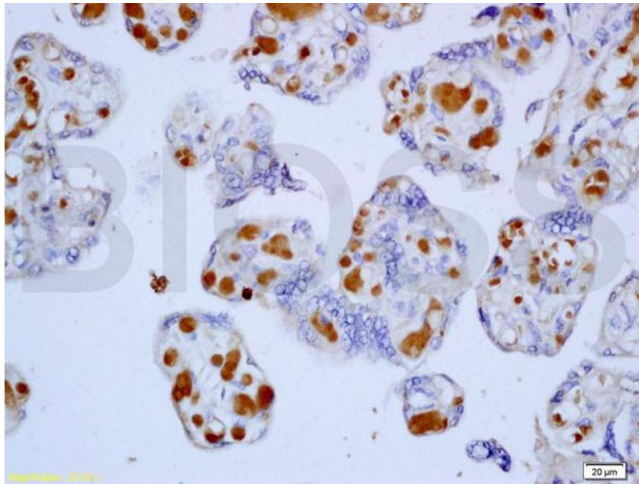
Handling

Preservative:	ProClin
Precaution of Use:	This product contains ProClin: a POISONOUS AND HAZARDOUS SUBSTANCE, which should be handled by trained staff only.
Storage:	4 °C,-20 °C
Storage Comment:	Shipped at 4°C. Store at -20°C for one year. Avoid repeated freeze/thaw cycles.
Expiry Date:	12 months

Publications

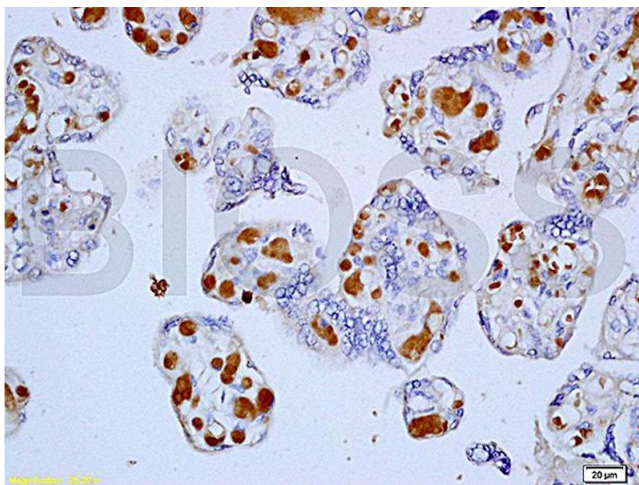
- Product cited in:
- Jiang, Xie, Cai, Ren, Ma: "Effects of hepatitis C virus core protein and nonstructural protein 4B on the Wnt/ β -catenin pathway." in: **BMC microbiology**, Vol. 17, Issue 1, pp. 124, (2017) ([PubMed](#)).
- Wang, Cao, Sun, Dai, Fang, Li, Yan, Mao, Zhang: "Total flavonoid aglycones extract in Radix scutellariae inhibits lung carcinoma and lung metastasis by affecting cell cycle and DNA synthesis." in: **Journal of ethnopharmacology**, Vol. 194, pp. 269-279, (2016) ([PubMed](#)).
- Zhang, Pan, Xu, Niu, Ma, Xu: "Interleukin 18 augments growth ability via NF- κ B and p38/ATF2 pathways by targeting cyclin B1, cyclin B2, cyclin A2, and Bcl-2 in BRL-3A rat liver cells." in: **Gene**, Vol. 563, Issue 1, pp. 45-51, (2015) ([PubMed](#)).
- Wang, Yang, Liu, Huang, Wang, Chen, Chen: "RBP-J-interacting and tubulin-associated protein induces apoptosis and cell cycle arrest in human hepatocellular carcinoma by activating the p53-Fbxw7 pathway." in: **Biochemical and biophysical research communications**, Vol. 454, Issue 1, pp. 71-7, (2015) ([PubMed](#)).
- Yang, Wang, Hui, Li, Jiang: "SOX 1, contrary to SOX 2, suppresses proliferation, migration, and invasion in human laryngeal squamous cell carcinoma by inhibiting the Wnt/ β -catenin pathway." in: **Tumour biology**, (2015) ([PubMed](#)).

There are more publications referencing this product on: [Product page](#)



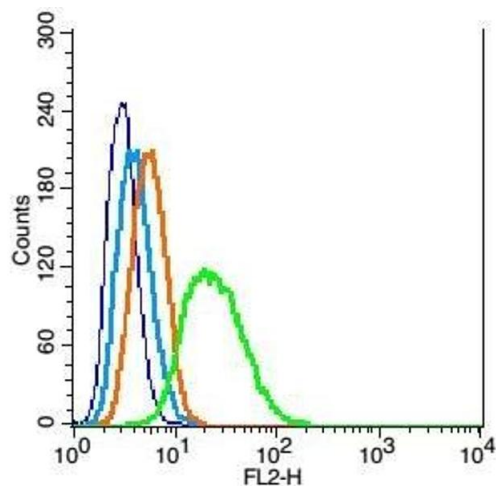
Immunohistochemistry

Image 1. Formalin-fixed and paraffin embedded human placenta tissue labeled with Anti-Cyclin D1 Polyclonal Antibody, Unconjugated (ABIN671016) at 1:200, followed by conjugation to the secondary antibody and DAB staining



Immunohistochemistry

Image 2. Formalin-fixed and paraffin embedded human placenta tissue labeled with Anti-Cyclin D1 Polyclonal Antibody, unconjugated (ABIN671016) at 1: 200, followed by incubation with conjugated secondary antibody and DAB staining



Flow Cytometry

Image 3. RSC96 cells probed with Cyclin D1 Polyclonal Antibody, Unconjugated at 1:100 for 30 minutes followed by incubation with a conjugated secondary (PE Conjugated) (green) for 30 minutes compared to control cells (blue), secondary only (light blue) and isotype control (orange).

Please check the [product details page](#) for more images. Overall 6 images are available for ABIN671016.