

Datasheet for ABIN671031
anti-BTLA antibody (AA 221-289)[Go to Product page](#)

3 Images

Overview

Quantity:	100 µL
Target:	BTLA
Binding Specificity:	AA 221-289
Reactivity:	Human, Mouse
Host:	Rabbit
Clonality:	Polyclonal
Conjugate:	This BTLA antibody is un-conjugated
Application:	Western Blotting (WB), ELISA, Flow Cytometry (FACS), Immunocytochemistry (ICC), Immunohistochemistry (Paraffin-embedded Sections) (IHC (p)), Immunofluorescence (Cultured Cells) (IF (cc)), Immunofluorescence (Paraffin-embedded Sections) (IF (p)), Immunohistochemistry (Frozen Sections) (IHC (fro))

Product Details

Immunogen:	KLH conjugated synthetic peptide derived from human B and T-lymphocyte attenuator
Isotype:	IgG
Cross-Reactivity:	Human, Mouse
Predicted Reactivity:	Rat
Purification:	Purified by Protein A.

Target Details

Target:	BTLA
---------	------

Target Details

Alternative Name:	CD272 (BTLA Products)
Background:	<p>Synonyms: BTLA1, CD272, B- and T-lymphocyte attenuator, B- and T-lymphocyte-associated protein, BTLA</p> <p>Background: B and T lymphocyte attenuator (BTLA), an immunoglobulin domain-containing glycoprotein with two immunoreceptor tyrosine-based inhibitory motifs. BTLA is not expressed by naive T cells, but it is induced during activation and remains expressed on T helper type 1 (T(H)1) but not T(H)2 cells. Crosslinking BTLA with antigen receptors induces its tyrosine phosphorylation and association with the Src homology domain 2 (SH2)-containing protein tyrosine phosphatases SHP-1 and SHP-2, and attenuates production of interleukin 2 (IL-2). BTLA-deficient T cells show increased proliferation, and BTLA-deficient mice have increased specific antibody responses and enhanced sensitivity to experimental autoimmune encephalomyelitis. B7x, a peripheral homolog of B7, is a ligand of BTLA. Thus, BTLA is a third inhibitory receptor on T lymphocytes with similarities to cytotoxic T lymphocyte-associated antigen 4 (CTLA-4) and programmed death 1 (PD-1).</p>
Gene ID:	151888
UniProt:	Q7Z6A9
Pathways:	Cancer Immune Checkpoints

Application Details

Application Notes:	WB 1:300-5000 ELISA 1:500-1000 FCM 1:20-100 IHC-P 1:200-400 IHC-F 1:100-500 IF(IHC-P) 1:50-200 IF(IHC-F) 1:50-200 IF(ICC) 1:50-200 ICC 1:100-500
Restrictions:	For Research Use only

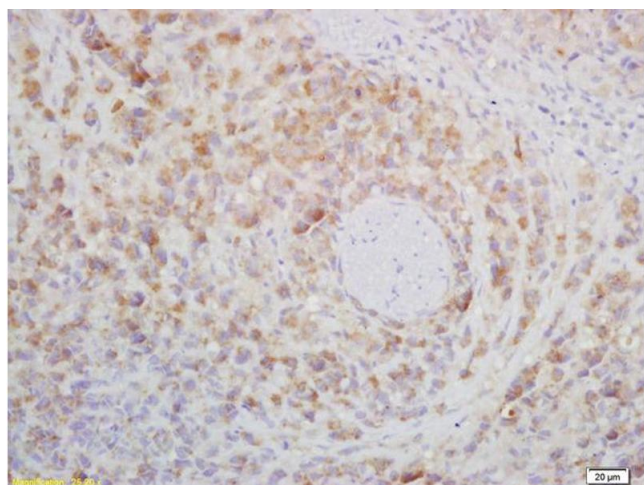
Handling

Format:	Liquid
Concentration:	1 µg/µL

Handling

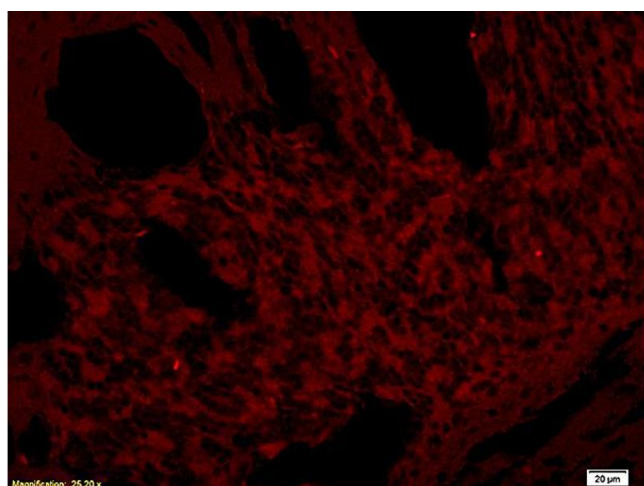
Buffer:	0.01M TBS(pH 7.4) with 1 % BSA, 0.02 % Proclin300 and 50 % Glycerol.
Preservative:	ProClin
Precaution of Use:	This product contains ProClin: a POISONOUS AND HAZARDOUS SUBSTANCE, which should be handled by trained staff only.
Storage:	4 °C,-20 °C
Storage Comment:	Shipped at 4°C. Store at -20°C for one year. Avoid repeated freeze/thaw cycles.
Expiry Date:	12 months

Images



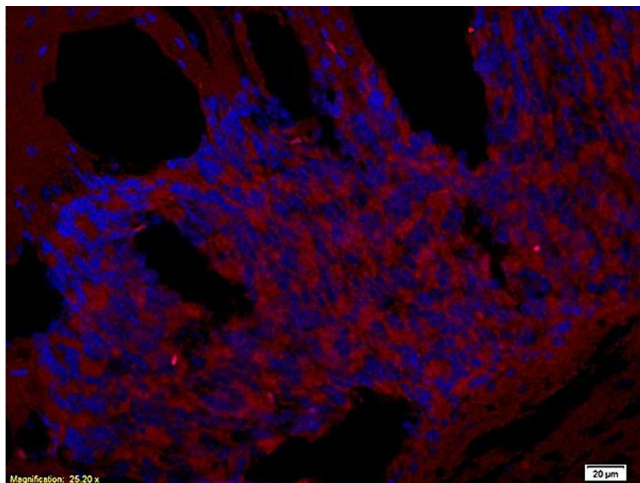
Immunohistochemistry

Image 1. Formalin-fixed and paraffin embedded mouse lymphoma labeled with Rabbit Anti-CD272/BTLA Polyclonal Antibody, Unconjugated (ABIN671031) at 1:200 followed by conjugation to the secondary antibody and DAB staining



Immunofluorescence

Image 2. Formalin-fixed and paraffin embedded rat skin tissue labeled with Rabbit Anti-CD272/BTLA Polyclonal Antibody (ABIN671031), Unconjugated at 1:200 followed by conjugation to the secondary antibody and DAB staining.



Immunofluorescence

Image 3. Formalin-fixed and paraffin embedded rat brain tissue labeled with Rabbit Anti-CD272/BTLA Polyclonal Antibody (ABIN671031), Unconjugated at 1:200 followed by conjugation to the secondary antibody and DAB staining.