



Datasheet for ABIN671451

anti-Connexin 43/GJA1 antibody (AA 211-260)



[Go to Product page](#)

3 Images

3 Publications

Overview

Quantity:	100 µL
Target:	Connexin 43/GJA1 (GJA1)
Binding Specificity:	AA 211-260
Reactivity:	Human, Rat, Mouse, Dog
Host:	Rabbit
Clonality:	Polyclonal
Conjugate:	This Connexin 43/GJA1 antibody is un-conjugated
Application:	Western Blotting (WB), ELISA, Immunohistochemistry (Paraffin-embedded Sections) (IHC (p)), Immunofluorescence (Paraffin-embedded Sections) (IF (p)), Flow Cytometry (FACS), Immunofluorescence (Cultured Cells) (IF (cc)), Immunohistochemistry (Frozen Sections) (IHC (fro))

Product Details

Immunogen:	KLH conjugated synthetic peptide derived from human Connexin-43
Isotype:	IgG
Cross-Reactivity:	Dog, Human, Mouse, Rat
Predicted Reactivity:	Cow,Chicken
Purification:	Purified by Protein A.

Target Details

Target:	Connexin 43/GJA1 (GJA1)
---------	-------------------------

Target Details

Alternative Name: [Connexin 43 \(GJA1 Products\)](#)

Background: Synonyms: HSS, CMDR, CX43, GJAL, ODDD, AVSD3, HLHS1, Gap junction alpha-1 protein, Connexin-43, Gap junction 43 kDa heart protein, GJA1
Background: Gap junction protein that acts as a regulator of bladder capacity. A gap junction consists of a cluster of closely packed pairs of transmembrane channels, the connexons, through which materials of low MW diffuse from one cell to a neighboring cell. May play a critical role in the physiology of hearing by participating in the recycling of potassium to the cochlear endolymph. Negative regulator of bladder functional capacity: acts by enhancing intercellular electrical and chemical transmission, thus sensitizing bladder muscles to cholinergic neural stimuli and causing them to contract (By similarity).

Gene ID: 2697

UniProt: [P17302](#)

Pathways: [MAPK Signaling](#), [Myometrial Relaxation and Contraction](#), [Cell-Cell Junction Organization](#)

Application Details

Application Notes: WB 1:300-5000
ELISA 1:500-1000
FCM 1:20-100
IHC-P 1:200-400
IHC-F 1:100-500
IF(IHC-P) 1:50-200
IF(IHC-F) 1:50-200
IF(ICC) 1:50-200

Restrictions: For Research Use only

Handling

Format: Liquid

Concentration: 1 µg/µL

Buffer: 0.01M TBS(pH 7.4) with 1 % BSA, 0.02 % Proclin300 and 50 % Glycerol.

Preservative: ProClin

Precaution of Use: This product contains ProClin: a POISONOUS AND HAZARDOUS SUBSTANCE, which should be handled by trained staff only.

Handling

Storage: 4 °C,-20 °C

Storage Comment: Shipped at 4°C. Store at -20°C for one year. Avoid repeated freeze/thaw cycles.

Expiry Date: 12 months

Publications

Product cited in: Zhao, Xu, Yun, Zhao, Li, Gong, Yuan, Yan, Zhang, Ding, Wang, Zhang, Dong, Xiu, Yang, Liu, Xue, Li : "Chronic obstructive sleep apnea causes atrial remodeling in canines: mechanisms and implications." in: **Basic research in cardiology**, Vol. 109, Issue 5, pp. 427, (2014) ([PubMed](#)).

Chen, Gao, Ni, Dai: "Carbenoxolone pretreatment and treatment of posttraumatic epilepsy." in: **Neural regeneration research**, Vol. 8, Issue 2, pp. 169-76, (2014) ([PubMed](#)).

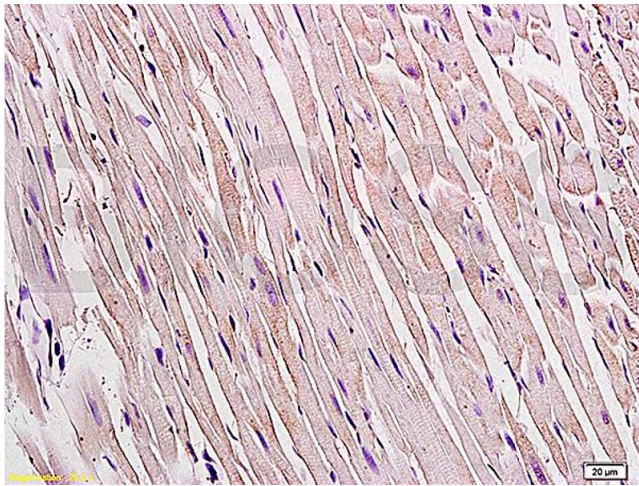
Gao, Zhang, Ding, Chen, Hu, Jiang, Li, Chen, Wang, Ye, Zhu: "Common expression of stemness molecular markers and early cardiac transcription factors in human Wharton's jelly-derived mesenchymal stem cells and embryonic stem cells." in: **Cell transplantation**, Vol. 22, Issue 10, pp. 1883-900, (2014) ([PubMed](#)).

Images



Immunofluorescence

Image 1. Formalin-fixed and paraffin embedded rat heart tissue labeled Anti-Connexin 43 Polyclonal Antibody, Unconjugated (ABIN671451) at 1:200, followed by conjugation to the secondary antibody Goat Anti-Rabbit IgG, PE conjugated used at 1:200 dilution for 40 minutes at 37°C.



Immunohistochemistry

Image 2. Formalin-fixed and paraffin embedded rat heart tissue labeled Anti-Connexin 43 Polyclonal Antibody, Unconjugated (ABIN671451) at 1:200, followed by conjugation to the secondary antibody and DAB staining

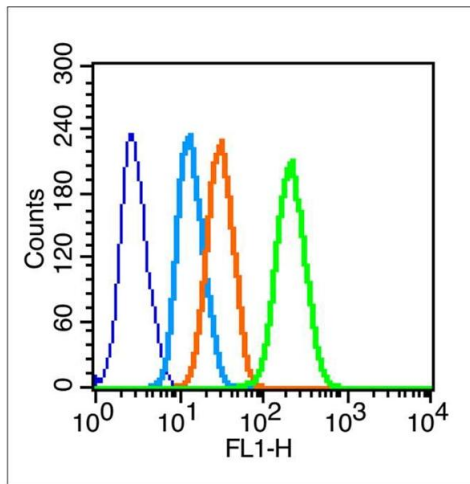


Image 3. HeLa cells probed with Connexin 43 Polyclonal Antibody, unconjugated at 1:100 dilution for 30 minutes compared to control cells (blue) and isotype control (orange)