

Datasheet for ABIN671631  
**anti-PIWIL1 antibody (AA 551-650)**

3 Images

1 Publication

[Go to Product page](#)

## Overview

Quantity:	100 µL
Target:	PIWIL1
Binding Specificity:	AA 551-650
Reactivity:	Human, Mouse
Host:	Rabbit
Clonality:	Polyclonal
Conjugate:	This PIWIL1 antibody is un-conjugated
Application:	Western Blotting (WB), ELISA, Immunofluorescence (Cultured Cells) (IF (cc)), Immunofluorescence (Paraffin-embedded Sections) (IF (p)), Immunohistochemistry (Paraffin- embedded Sections) (IHC (p)), Immunohistochemistry (Frozen Sections) (IHC (fro))

## Product Details

Immunogen:	KLH conjugated synthetic peptide derived from chicken PIWIL1
Isotype:	IgG
Cross-Reactivity:	Human, Mouse
Predicted Reactivity:	Rat,Chicken
Purification:	Purified by Protein A.

## Target Details

Target:	PIWIL1
---------	--------

## Target Details

Alternative Name:	PIWIL1 ( <a href="#">PIWIL1 Products</a> )
Background:	<p>Synonyms: PIWI, Piwi-like protein 1, PIWIL1</p> <p>Background: Plays a central role during gametogenesis by repressing transposable elements and preventing their mobilization, which is essential for the germline integrity. Acts via the piRNA metabolic process, which mediates the repression of transposable elements during meiosis by forming complexes composed of piRNAs and Piwi proteins and govern the methylation and subsequent repression of transposons. Directly binds methylated piRNAs, a class of 24 to 3 nucleotide RNAs that are generated by a Dicer-independent mechanism and are primarily derived from transposons and other repeated sequence elements. Besides their function in transposable elements repression, piRNAs are probably involved in other processes during meiosis such as translation regulation (By similarity).</p>
Gene ID:	416804
UniProt:	<a href="#">A6N7Y9</a>

## Application Details

Application Notes:	<p>WB 1:300-5000</p> <p>ELISA 1:500-1000</p> <p>IHC-P 1:200-400</p> <p>IHC-F 1:100-500</p> <p>IF(IHC-P) 1:50-200</p> <p>IF(IHC-F) 1:50-200</p> <p>IF(ICC) 1:50-200</p>
Restrictions:	For Research Use only

## Handling

Format:	Liquid
Concentration:	1 µg/µL
Buffer:	0.01M TBS( pH 7.4) with 1 % BSA, 0.02 % Proclin300 and 50 % Glycerol.
Preservative:	ProClin
Precaution of Use:	This product contains ProClin: a POISONOUS AND HAZARDOUS SUBSTANCE, which should be handled by trained staff only.
Storage:	4 °C, -20 °C

## Handling

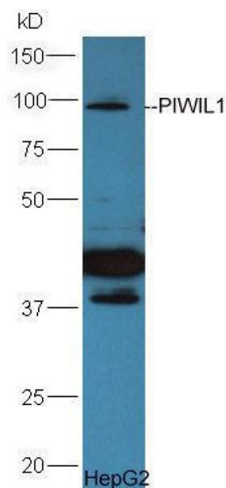
Storage Comment: Shipped at 4°C. Store at -20°C for one year. Avoid repeated freeze/thaw cycles.

Expiry Date: 12 months

## Publications

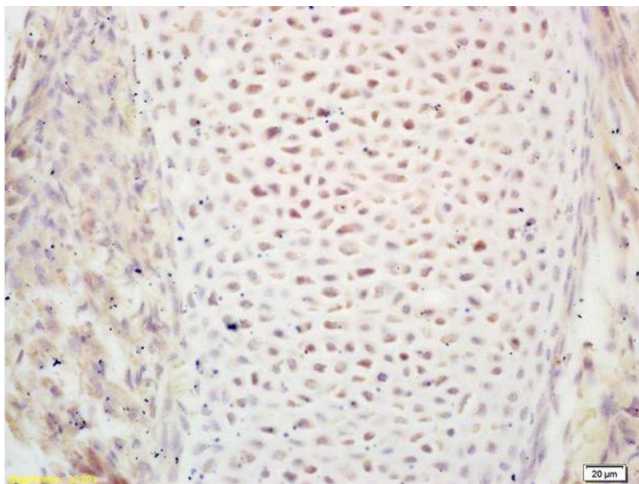
Product cited in: Liu, Jiang, Zhang: "Expression of PSCA, PIWIL1 and TBX2 and its correlation with HPV16 infection in formalin-fixed, paraffin-embedded cervical squamous cell carcinoma specimens." in: **Archives of virology**, Vol. 155, Issue 5, pp. 657-63, (2010) ([PubMed](#)).

## Images



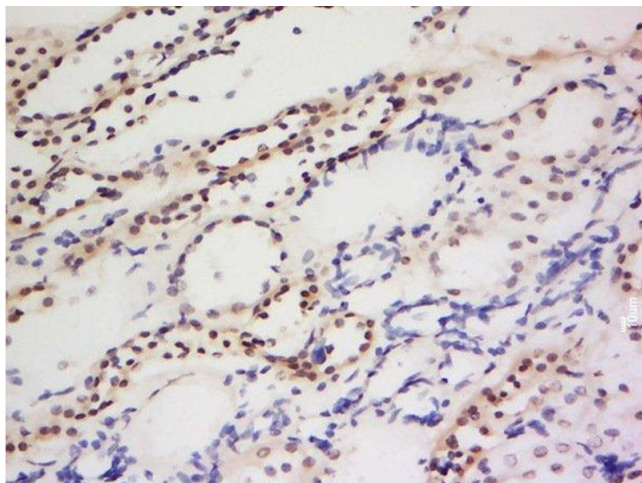
### Western Blotting

**Image 1.** HepG2 lysate probed at 1:5000 90min in 37°C.



### Immunohistochemistry

**Image 2.** Formalin-fixed and paraffin embedded mouse embryo labeled with Rabbit Anti PIWIL1/Miwi Polyclonal Antibody, Unconjugated (ABIN671631) at 1:200 followed by conjugation to the secondary antibody and DAB staining



#### Immunohistochemistry (Paraffin-embedded Sections)

**Image 3.** Formalin-fixed and paraffin embedded human kidney labeled with Anti-PIWIL1 Polyclonal Antibody, Unconjugated at 1:200 followed by conjugation to the secondary antibody and DAB staining.