



[Go to Product page](#)

Datasheet for ABIN671691

anti-C-JUN antibody (AA 31-331)

6 Images

5 Publications

Overview

Quantity:	100 µL
Target:	C-JUN (JUN)
Binding Specificity:	AA 31-331
Reactivity:	Human, Mouse, Rat, Chicken
Host:	Rabbit
Clonality:	Polyclonal
Conjugate:	This C-JUN antibody is un-conjugated
Application:	Western Blotting (WB), ELISA, Immunohistochemistry (Paraffin-embedded Sections) (IHC (p)), Flow Cytometry (FACS), Immunofluorescence (Cultured Cells) (IF (cc)), Immunofluorescence (Paraffin-embedded Sections) (IF (p)), Immunohistochemistry (Frozen Sections) (IHC (fro))

Product Details

Immunogen:	KLH conjugated synthetic peptide derived from human c-Jun
Isotype:	IgG
Cross-Reactivity:	Chicken, Human, Mouse, Rat
Predicted Reactivity:	Dog,Cow,Sheep,Pig
Purification:	Purified by Protein A.

Target Details

Target:	C-JUN (JUN)
---------	-------------

Target Details

Alternative Name:	c-Jun (JUN Products)
Background:	Synonyms: AP1, AP-1, c-Jun, Transcription factor AP-1, Activator protein 1, Proto-oncogene c-Jun, V-jun avian sarcoma virus 17 oncogene homolog, p39, JUN Background: Transcription factor that recognizes and binds to the enhancer heptamer motif 5'-TGA[CG]TCA-3'. Promotes activity of NR5A1 when phosphorylated by HIPK3 leading to increased steroidogenic gene expression upon cAMP signaling pathway stimulation.
Gene ID:	3725
UniProt:	P05412
Pathways:	MAPK Signaling , RTK Signaling , WNT Signaling , Fc-epsilon Receptor Signaling Pathway , Activation of Innate immune Response , Myometrial Relaxation and Contraction , Skeletal Muscle Fiber Development , Protein targeting to Nucleus , Toll-Like Receptors Cascades , Autophagy , Signaling of Hepatocyte Growth Factor Receptor , BCR Signaling , S100 Proteins

Application Details

Application Notes:	WB 1:300-5000 ELISA 1:500-1000 FCM 1:20-100 IHC-P 1:200-400 IHC-F 1:100-500 IF(IHC-P) 1:50-200 IF(IHC-F) 1:50-200 IF(ICC) 1:50-200
Restrictions:	For Research Use only

Handling

Format:	Liquid
Concentration:	1 µg/µL
Buffer:	0.01M TBS(pH 7.4) with 1 % BSA, 0.02 % Proclin300 and 50 % Glycerol.
Preservative:	ProClin
Precaution of Use:	This product contains ProClin: a POISONOUS AND HAZARDOUS SUBSTANCE, which should be handled by trained staff only.

Handling

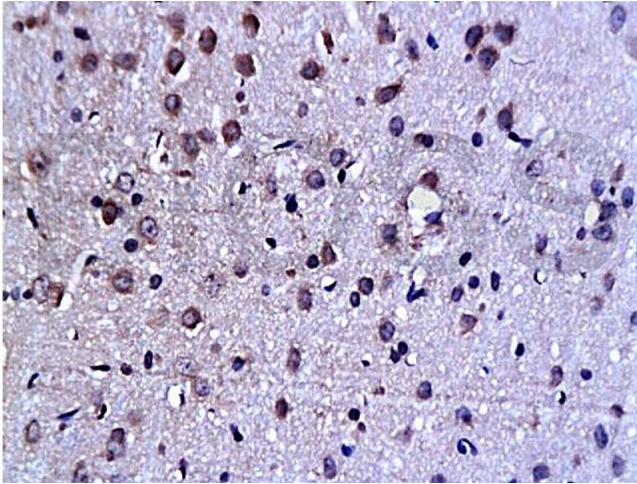
Storage: 4 °C,-20 °C

Storage Comment: Shipped at 4°C. Store at -20°C for one year. Avoid repeated freeze/thaw cycles.

Expiry Date: 12 months

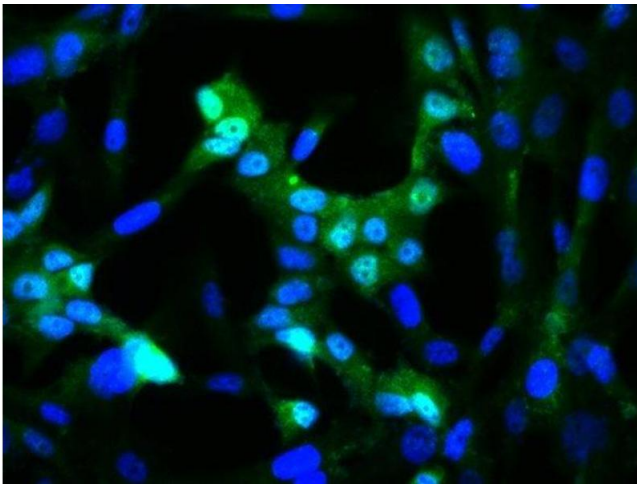
Publications

- Product cited in:
- Liu, Lv, Ning, Yang, Zhu: "Therapeutic effects of 1,25-dihydroxyvitamin D3 on diabetes-induced liver complications in a rat model." in: **Experimental and therapeutic medicine**, Vol. 11, Issue 6, pp. 2284-2292, (2016) ([PubMed](#)).
- Zhou, Lu, Wang, Xiao, Liu, Xing: "microRNA let-7c is essential for the anisomycin-elicited apoptosis in Jurkat T cells by linking JNK1/2 to AP-1/STAT1/STAT3 signaling." in: **Scientific reports**, Vol. 6, pp. 24434, (2016) ([PubMed](#)).
- Zhang, Lin, Jin, Lin, Cao, Zheng: "Overexpression of WNT5B promotes COLO 205 cell migration and invasion through the JNK signaling pathway." in: **Oncology reports**, Vol. 36, Issue 1, pp. 23-30, (2016) ([PubMed](#)).
- Du, Niu, Wang, Zhao, Kong, Zhang, Nan: "TLR4-dependent signaling pathway modulation: A novel mechanism by which pioglitazone protects against nutritional fibrotic steatohepatitis in mice." in: **Molecular medicine reports**, Vol. 13, Issue 3, pp. 2159-66, (2016) ([PubMed](#)).
- Zhang, Pan, Xu, Niu, Ma, Xu: "Interleukin 18 augments growth ability via NF- κ B and p38/ATF2 pathways by targeting cyclin B1, cyclin B2, cyclin A2, and Bcl-2 in BRL-3A rat liver cells." in: **Gene**, Vol. 563, Issue 1, pp. 45-51, (2015) ([PubMed](#)).



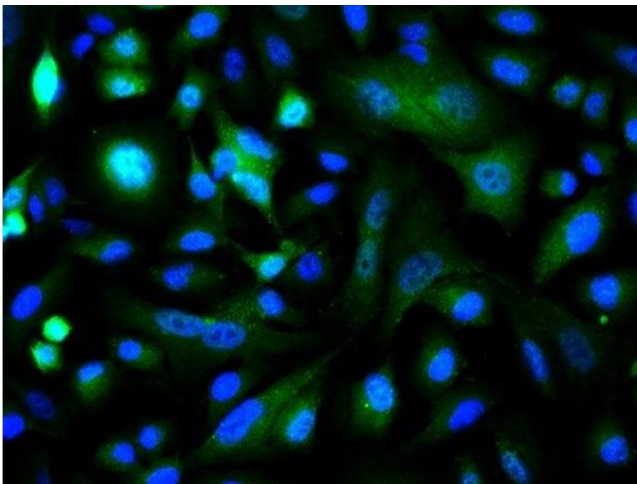
Immunohistochemistry

Image 1. Formalin-fixed and paraffin embedded rat brain tissue labeled Anti-C-Jun Polyclonal Antibody (ABIN671691), Unconjugated at 1:200, followed by conjugation to the secondary antibody and DAB staining



Immunofluorescence (Cultured Cells)

Image 2. Image provided by One World Lab validation program. U138 cells probed with Rabbit Anti-c-Jun Polyclonal Antibody at 1:50 for 60 minutes at room temperature followed by Goat Anti-Rabbit IgG (H+L) Alexa Fluor 488 Conjugated secondary antibody.



Immunofluorescence (Cultured Cells)

Image 3. Image provided by One World Lab validation program. A549 cells probed with Rabbit Anti-c-Jun Polyclonal Antibody at 1:50 for 60 minutes at room temperature followed by Goat Anti-Rabbit IgG (H+L) Alexa Fluor 488 Conjugated secondary antibody.

Please check the [product details page](#) for more images. Overall 6 images are available for ABIN671691.