

Datasheet for ABIN6719682 **MYD88 ELISA Kit**



[Go to Product page](#)

1 Image

Overview

Quantity:	1 kit
Target:	MYD88
Reactivity:	Human
Method Type:	Sandwich ELISA
Detection Range:	312 pg/mL - 20000 pg/mL
Minimum Detection Limit:	312 pg/mL
Application:	ELISA

Product Details

Purpose:	Sandwich ELISA for Quantitative Detection of Antigen
Sample Type:	Cell Culture Supernatant
Analytical Method:	Quantitative
Detection Method:	Colorimetric
Characteristics:	<p>Synonyms: Myd88, MYD88_HUMAN, MYD88D, myeloid differentiation primary response gene (88), Myeloid differentiation primary response protein MyD88</p> <p>Background: Myeloid differentiation primary response gene(88)(MYD88) is a protein that, in humans, is encoded by the MYD88 gene. By interspecific backcross mapping, the mouse MyD88 gene was localized to chromosome 9, the human homolog was mapped to 3p22-p21.3</p> <p>The human ortholog MYD88 seems to function similarly to mice, however, available evidence suggests that MYD88 is dispensable for human resistance to common viral infections and to all but a few pyogenic bacterial infections, demonstrating a major difference between mouse and</p>

Product Details

human immune responses.

Gene Name: MYD88

Production: Natural and recombinant human MyD88. There is no detectable cross-reactivity with other relevant proteins.

Standard: Expression system for standard: E.coli, Immunogen sequence: M1-P296

Target Details

Target:	MYD88
Alternative Name:	MyD88 (MYD88 Products)
Gene ID:	4615
NCBI Accession:	NP_001166037
UniProt:	Q99836
Pathways:	NF-kappaB Signaling , TLR Signaling , Neurotrophin Signaling Pathway , Activation of Innate immune Response , Cellular Response to Molecule of Bacterial Origin , Positive Regulation of Immune Effector Process , Production of Molecular Mediator of Immune Response , Toll-Like Receptors Cascades

Application Details

Application Notes:	<p>Application Note: Useful in Sandwich ELISA for Quantitative Detection of Antigen. Aliquot 0.1 mL per well of the 20000pg/mL, 10000pg/mL, 5000pg/mL, 2500pg/mL, 1250pg/mL, 625pg/mL, 312pg/mL human MyD88 standard solutions into the precoated 96-well plate. Add 0.1 mL of the sample diluent buffer into the control well (Zero well). Add 0.1 mL of each properly diluted sample of human cell culture supernates to each empty well. It is recommended that each human MyD88 standard solution and each sample be measured in duplicate.</p> <p>ELISA Dilution: 312pg/mL-20000pg/mL</p>
--------------------	--

Sample Volume:	100 µL
Plate:	Pre-coated
Restrictions:	For Research Use only

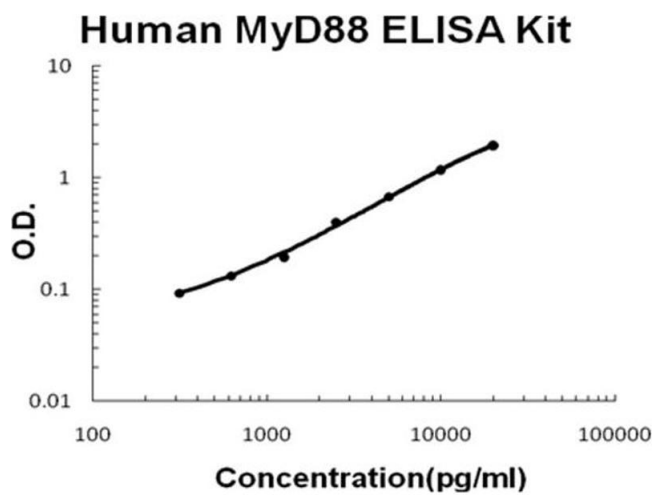
Handling

Storage:	RT,4 °C,-20 °C
----------	----------------

Handling

Storage Comment: Store vials at 4°C prior to opening. Centrifuge product if not completely clear after standing at room temperature. This product is stable for 6 months at 4°C as an undiluted liquid. Dilute only prior to immediate use. For extended storage freeze at -20°C or below for 12 months. Avoid cycles of freezing and thawing.

Images



ELISA

Image 1. Human MyD88 Accusignal ELISA Kit Human MyD88 AccuSignal ELISA Kit standard curve. Assay Range: 312pg/ml-20000pg/ml. Sensitivity: <10pg/ml.