

Datasheet for ABIN6719695 CD80 ELISA Kit



[Go to Product page](#)

1 Image

Overview

Quantity:	1 kit
Target:	CD80
Reactivity:	Rat
Method Type:	Sandwich ELISA
Detection Range:	62.5 pg/mL - 4000 pg/mL
Minimum Detection Limit:	62.5 pg/mL
Application:	ELISA

Product Details

Purpose:	Sandwich ELISA for Quantitative Detection of Antigen
Sample Type:	Cell Culture Supernatant, Serum
Analytical Method:	Quantitative
Detection Method:	Colorimetric
Characteristics:	<p>Synonyms: Activation B7-1 antigen, B7, BB1, CD80, CD80_HUMAN, CTLA-4 counter-receptor B7.1, T-lymphocyte activation antigen CD82</p> <p>Background: The protein CD80(Cluster of Differentiation 80) is a molecule found on activated B cells and monocytes which provides a costimulatory signal necessary for T cell activation and survival. It is also known as B7-1. The cDNA for B7-1 predicts a type I membrane protein, i.e., one synthesized with a signal peptide that is cleaved upon translocation across the endoplasmic membrane. The protein is predicted to contain 2 extracellular domains structurally similar to those of Ig, a hydrophobic transmembrane region, and a short cytoplasmic</p>

Product Details

domain. The CD80 and CD86 genes encode B7-1 and B7-2, respectively, which are structurally similar members of the immunoglobulin superfamily expressed on a variety of hematopoietic cell types. B7-1 and B7-2 provide a costimulatory signal to T cells by interacting with CD28 and CTLA4.

Gene Name: CD80

Production: Natural and recombinant rat CD80. There is no detectable cross-reactivity with other relevant proteins.

Standard: Expression system for standard: NSO, Immunogen sequence: I39-Q248

Target Details

Target:	CD80
Alternative Name:	CD80 - B7-1 (CD80 Products)
Gene ID:	25408
NCBI Accession:	NP_037058
UniProt:	O35187
Pathways:	TCR Signaling , Fc-epsilon Receptor Signaling Pathway , EGFR Signaling Pathway , Neurotrophin Signaling Pathway , Positive Regulation of Immune Effector Process , Cancer Immune Checkpoints

Application Details

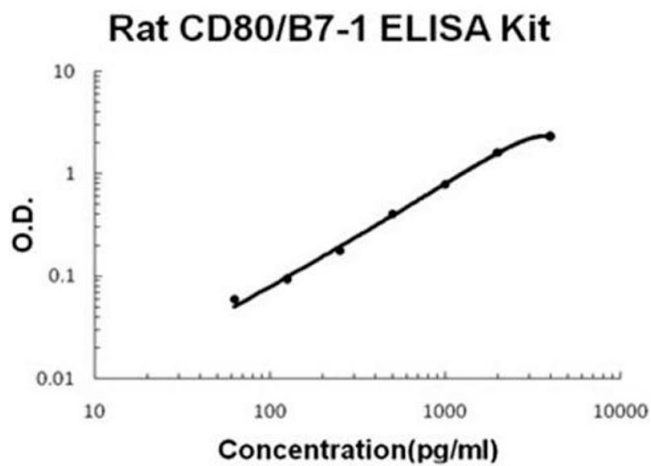
Application Notes:	Application Note: Useful in Sandwich ELISA for Quantitative Detection of Antigen. Aliquot 0.1 mL per well of the 4000pg/mL, 2000pg/mL, 1000pg/mL, 500pg/mL, 250pg/mL, 125pg/mL, 62.5pg/mL rat CD80 standard solutions into the precoated 96-well plate. Add 0.1 mL of the sample diluent buffer into the control well (Zero well). Add 0.1 mL of each properly diluted sample of rat cell culture supernates or serum to each empty well. It is recommended that each rat CD80 standard solution and each sample be measured in duplicate. ELISA Dilution: 62.5pg/mL-4000pg/mL
Sample Volume:	100 µL
Plate:	Pre-coated
Restrictions:	For Research Use only

Handling

Storage: RT,4 °C,-20 °C

Storage Comment: Store vials at 4°C prior to opening. Centrifuge product if not completely clear after standing at room temperature. This product is stable for 6 months at 4°C as an undiluted liquid. Dilute only prior to immediate use. For extended storage freeze at -20°C or below for 12 months. Avoid cycles of freezing and thawing.

Images



ELISA

Image 1. Rat CD80/B7-1 Accusignal ELISA Kit Rat CD80/B7-1 AccuSignal ELISA Kit standard curve. Assay Range: 62.5pg/ml-4000pg/ml. Sensitivity: <2pg/ml.