

Datasheet for ABIN6719741

**Prolactin ELISA Kit****1** Image[Go to Product page](#)

## Overview

Quantity:	1 kit
Target:	Prolactin (PRL)
Reactivity:	Mouse
Method Type:	Sandwich ELISA
Detection Range:	156 pg/mL - 10000 pg/mL
Minimum Detection Limit:	156 pg/mL
Application:	ELISA

## Product Details

Purpose:	Mouse Prolactin Sandwich ELISA Kit for Quantitative Detection
Brand:	AccuSignal™
Sample Type:	Cell Culture Supernatant, Plasma (EDTA - heparin - citrate), Serum
Analytical Method:	Quantitative
Detection Method:	Colorimetric
Specificity:	Production: Natural and recombinant mouse Prolactin. There is no detectable cross-reactivity with other relevant proteins.
Sensitivity:	< 10 pg/mL
Components:	<ul style="list-style-type: none"><li>• Antibody-coated 96-well plate</li><li>• Target Protein Standard</li><li>• Detection antibody</li></ul>

## Product Details

---

- Detection reagent
- Diluent buffers
- Wash buffers
- Substrate Solution
- Stop solutions
- Adhesive covers

## Target Details

---

Target: Prolactin (PRL)

Alternative Name: Prolactin ([PRL Products](#))

Background: Synonyms: AV290867, Lactogenic Hormone, Luteotropic Hormone, Mamotropin, OTTMUSP00000000651, PRL, Prl1a1, Prol, Prolactin precursor, RATPRLSD1, RNPROL, RP23-35116.2, RP3-404K8.2

Background: Prolactin, also called PRL, is a protein that in humans is encoded by the PRL gene. This gene is mapped to 6p22.3. This gene encodes the anterior pituitary hormone prolactin. It may play a role in cell survival by suppressing apoptosis, and it is essential for lactation. Prolactin also acts in a cytokine-like manner and as an important regulator of the immune system. Prolactin has important cell cycle related functions as a growth-, differentiating- and anti-apoptotic factor. As a growth factor binding to cytokine like receptors it has also profound influence on hematopoiesis, angiogenesis and is involved in the regulation of blood clotting through several pathways.

Gene ID: 19109

NCBI Accession: [NP\\_001157002](#)

UniProt: [P06879](#)

Pathways: [JAK-STAT Signaling](#), [Peptide Hormone Metabolism](#), [Response to Growth Hormone Stimulus](#), [Protein targeting to Nucleus](#)

## Application Details

---

Application Notes: ELISA\_Dilution: 156pg/mL-10000pg/mL

Application\_Note: Useful in Sandwich ELISA for Quantitative Detection of Antigen. Aliquot 0.1 mL per well of the 10000pg/mL, 5000pg/mL, 2500pg/mL, 1250pg/mL, 625pg/mL, 312pg/mL, 156pg/mL mouse Prolactin standard solutions into the precoated 96-well plate. Add 0.1 mL of the sample diluent buffer into the control well (Zero well). Add 0.1 mL of each

## Application Details

properly diluted sample of mouse cell culture supernates, serum or plasma(heparin, citrate) to each empty well. It is recommended that each mouse Prolactin standard solution and each sample be measured in duplicate.

Comment: Standard: Expression system for standard: E.coli, Immunogen sequence: L32-C228

Sample Volume: 100  $\mu$ L

Plate: Pre-coated

Restrictions: For Research Use only

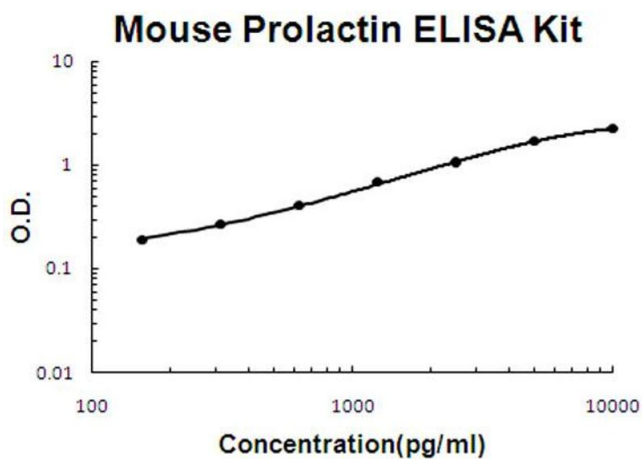
## Handling

Storage: 4 °C, -20 °C

Storage Comment: Store vials at 4°C prior to opening. Centrifuge product if not completely clear after standing at room temperature. This product is stable for 6 months at 4°C as an undiluted liquid. Dilute only prior to immediate use. For extended storage freeze at -20°C or below for 12 months. Avoid cycles of freezing and thawing.

Expiry Date: 12 months

## Images



### ELISA

**Image 1.** Mouse Prolactin Accusignal ELISA Kit Mouse Prolactin AccuSignal ELISA Kit standard curve. Assay Range: 156pg/ml-10000pg/ml. Sensitivity: <10pg/ml.