

Datasheet for ABIN6719743  
**Soluble E-Selectin ELISA Kit**



[Go to Product page](#)

1 Image

## Overview

Quantity:	1 kit
Target:	Soluble E-Selectin (sE-Selectin)
Reactivity:	Rat
Method Type:	Sandwich ELISA
Detection Range:	156 pg/mL - 10000 pg/mL
Minimum Detection Limit:	156 pg/mL
Application:	ELISA

## Product Details

Purpose:	Rat sE-Selectin Sandwich ELISA Kit for Quantitative Detection
Brand:	AccuSignal™
Sample Type:	Cell Culture Supernatant, Plasma (EDTA - heparin - citrate), Serum
Analytical Method:	Quantitative
Detection Method:	Colorimetric
Specificity:	Production: Natural and recombinant rat sE-Selectin. There is no detectable cross-reactivity with other relevant proteins.
Sensitivity:	< 10 pg/mL
Components:	<ul style="list-style-type: none"><li>• Antibody-coated 96-well plate</li><li>• Target Protein Standard</li><li>• Detection antibody</li></ul>

## Product Details

---

- Detection reagent
- Diluent buffers
- Wash buffers
- Substrate Solution
- Stop solutions
- Adhesive covers

## Target Details

---

Target:	Soluble E-Selectin (sE-Selectin)
Alternative Name:	sE-Selectin ( <a href="#">sE-Selectin Products</a> )
Background:	<p>Synonyms: CD62 antigen-like family member E, CD62E, CD62E antigen, E selectin, E-selectin, ELAM, ELAM-1, ELAM1, Endothelial leukocyte adhesion molecule 1, ESEL, LECAM2, Leukocyte endothelial cell adhesion molecule 2, Leukocyte-endothelial cell adhesion molecule 2, LYAM2_HUMAN, Sele</p> <p>Background: E-selectin, also called endothelial-leukocyte adhesion molecule-1(ELAM-1), is a cell surface glycoprotein expressed by cytokine-activated endothelium that mediates the adhesion of blood neutrophils.<sup>1</sup> An increased expression of E-selectin has been observed in the arterial endothelium interacting with lymphocytes and macrophages in human atherosclerotic lesions.<sup>2</sup> E-selectin plays a critical role in mediating tissue-specific homing of T cells into skin, and of primitive hematopoietic progenitor cells(HPCs) into bone marrow(BM).<sup>3</sup> A structurally and functionally related group of genes, lymph node homing receptor(LHR), granule membrane protein 140(GMP-140), and endothelial leukocyte adhesion molecule 1(ELAM-1) are shown to constitute a gene cluster on mouse and human chromosome 1.<sup>4</sup></p>
Gene ID:	25544
NCBI Accession:	<a href="#">NP_620234</a>
UniProt:	<a href="#">P98105</a>

## Application Details

---

Application Notes:	Useful in Sandwich ELISA for Quantitative Detection of Antigen. Aliquot 0.1 mL per well of the 10000pg/mL, 5000pg/mL, 2500pg/mL, 1250pg/mL, 625pg/mL, 312pg/mL, 156pg/mL rat E-Selectin standard solutions into the precoated 96-well plate. Add 0.1 mL of the sample diluent buffer into the control well (Zero well). Add 0.1 mL of each properly diluted sample of rat cell culture supernates, serum or plasma(heparin, citrate) to each empty well. It is recommended that each rat E-Selectin standard solution and each sample be measured in duplicate.
--------------------	-----------------------------------------------------------------------------------------------------------------------------------------------------------------------------------------------------------------------------------------------------------------------------------------------------------------------------------------------------------------------------------------------------------------------------------------------------------------------------------------------------------------------------------------------------------------

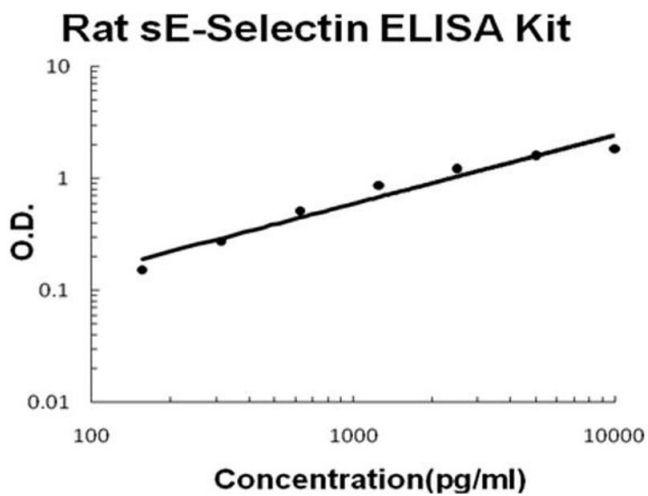
## Application Details

Comment:	Standard: Expression system for standard: NSO, Immunogen sequence: W22-P494
Sample Volume:	100 µL
Plate:	Pre-coated
Restrictions:	For Research Use only

## Handling

Storage:	4 °C, -20 °C
Storage Comment:	Store vials at 4°C prior to opening. Centrifuge product if not completely clear after standing at room temperature. This product is stable for 6 months at 4°C as an undiluted liquid. Dilute only prior to immediate use. For extended storage freeze at -20°C or below for 12 months. Avoid cycles of freezing and thawing.
Expiry Date:	12 months

## Images



### ELISA

**Image 1.** Rat sE-Selectin Accusignal ELISA Kit Rat sE-Selectin AccuSignal ELISA Kit standard curve. Assay Range: 156pg/ml-10000pg/ml. Sensitivity: <10pg/ml.