

Datasheet for ABIN6719761

alpha 2 Macroglobulin ELISA Kit**1** Image[Go to Product page](#)

Overview

| | |
|--------------------------|-----------------------------|
| Quantity: | 1 kit |
| Target: | alpha 2 Macroglobulin (A2M) |
| Reactivity: | Human |
| Method Type: | Sandwich ELISA |
| Detection Range: | 625 pg/mL - 40000 pg/mL |
| Minimum Detection Limit: | 625 pg/mL |
| Application: | ELISA |

Product Details

| | |
|--------------------|--|
| Purpose: | Sandwich ELISA for Quantitative Detection of Antigen |
| Sample Type: | Cell Culture Supernatant, Plasma (EDTA - heparin), Serum |
| Analytical Method: | Quantitative |
| Detection Method: | Colorimetric |
| Characteristics: | <p>Synonyms: C3 and PZP-like alpha-2-macroglobulin domain-containing protein 5, A2m, A2MD, A2MG_HUMAN, Alpha-2-M, Alpha-2-macroglobulin, C3 and PZP-like alpha-2-macroglobulin domain-containing protein 5, CPAMD5, FWP007, Pregnancy zone protein, S863-7</p> <p>Background: Alpha-2-macroglobulin, also known as A2M or CPAMD5 is a large plasma protein found in the blood. This gene is mapped to 12p13.31. Alpha-2-macroglobulin is a protease inhibitor and cytokine transporter. It inhibits many proteases, including trypsin, thrombin and collagenase. A2M is implicated in Alzheimer disease(AD) due to its ability to mediate the clearance and degradation of A-beta, the major component of beta-amyloid deposits. This gene</p> |

Product Details

is able to inhibit all four classes of proteinases by a unique 'trapping' mechanism. This protein has a peptide stretch, called the 'bait region' which contains specific cleavage sites for different proteinases. When a proteinase cleaves the bait region, a conformational change is induced in the protein which traps the proteinase. The entrapped enzyme remains active against low molecular weight substrates (activity against high molecular weight substrates is greatly reduced). Following cleavage in the bait region a thioester bond is hydrolyzed and mediates the covalent binding of the protein to the proteinase.

Gene Name: A2M

Production: Natural human A2M. There is no detectable cross-reactivity with other relevant proteins.

Standard: from human plasma

Target Details

| | |
|-------------------|---|
| Target: | alpha 2 Macroglobulin (A2M) |
| Alternative Name: | A2M-alpha2-Macroglobulin (A2M Products) |
| Gene ID: | 2 |
| NCBI Accession: | NP_000005 |
| UniProt: | P01023 |
| Pathways: | Lipid Metabolism |

Application Details

| | |
|--------------------|---|
| Application Notes: | <p>Application Note: Useful in Sandwich ELISA for Quantitative Detection of Antigen. Aliquot 0.1 mL per well of the 40,000pg/mL, 20,000pg/mL, 10,000pg/mL, 5,000pg/mL, 2,500pg/mL, 1,250pg/mL, 625pg/mL human A2M standard solutions into the precoated 96-well plate. Add 0.1 mL of the sample diluent buffer into the control well (Zero well). Add 0.1 mL of each properly diluted sample of human cell culture supernates, serum or plasma (heparin, EDTA) to each empty well. It is recommended that each human A2M standard solution and each sample be measured in duplicate.</p> <p>Blood Product Anticoagulant: Heparin Sodium</p> <p>ELISA Dilution: 625pg/mL-40,000pg/mL</p> |
| Sample Volume: | 100 µL |
| Plate: | Pre-coated |

Application Details

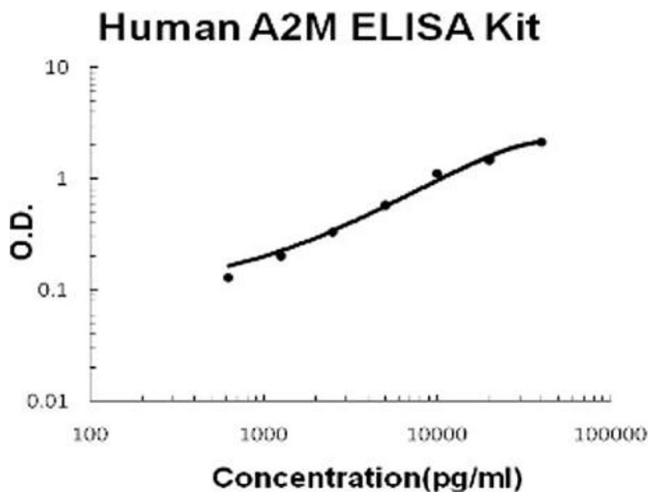
Restrictions: For Research Use only

Handling

Storage: RT,4 °C,-20 °C

Storage Comment: Store vials at 4°C prior to opening. Centrifuge product if not completely clear after standing at room temperature. This product is stable for 6 months at 4°C as an undiluted liquid. Dilute only prior to immediate use. For extended storage freeze at -20°C or below for 12 months. Avoid cycles of freezing and thawing.

Images



ELISA

Image 1. Human A2M/alpha2-Macroglobulin Accusignal ELISA Kit Human A2M/alpha2-Macroglobulin AccuSignal ELISA Kit standard curve. Assay Range: 625pg/ml-40,000pg/ml. Sensitivity: <20pg/ml.