

Datasheet for ABIN6719855

**IL-21 ELISA Kit****1** Image[Go to Product page](#)

## Overview

Quantity:	1 kit
Target:	IL-21 (IL21)
Reactivity:	Mouse
Method Type:	Sandwich ELISA
Detection Range:	62.5 pg/mL - 4000 pg/mL
Minimum Detection Limit:	62.5 pg/mL
Application:	ELISA

## Product Details

Purpose:	Mouse IL-21 Sandwich ELISA Kit for Quantitative Detection
Brand:	AccuSignal™
Sample Type:	Cell Culture Supernatant, Serum
Analytical Method:	Quantitative
Detection Method:	Colorimetric
Specificity:	Production: Natural and recombinant mouse IL-21. There is no detectable cross-reactivity with other relevant proteins.
Sensitivity:	< 10 pg/mL
Components:	<ul style="list-style-type: none"><li>• Antibody-coated 96-well plate</li><li>• Target Protein Standard</li><li>• Detection antibody</li></ul>

## Product Details

---

- Detection reagent
- Diluent buffers
- Wash buffers
- Substrate Solution
- Stop solutions
- Adhesive covers

## Target Details

---

Target:	IL-21 (IL21)
Alternative Name:	IL-21 ( <a href="#">IL21 Products</a> )
Background:	<p>Synonyms: Cytokine CX2, DN 452A22.7, IL 21, Interleukin 21, Interleukin 21 isoform, Interleukin21, OTTMUSP00000007838, Za11</p> <p>Background: Interleukin-21 is a protein that in humans is encoded by the IL21 gene. Interleukin 21 is a cytokine that has potent regulatory effects on cells of the immune system, including natural killer(NK) cells and cytotoxic T cells that can destroy virally infected or cancerous cells. By radiation hybrid analysis, the IL21 gene is mapped to chromosome 4q26-q27, near the IL2 gene. IL21 stimulates B-cell proliferation in an anti-CD40-dependent manner but inhibits proliferation stimulated by IL4 plus anti-IgM. The biologic effects of IL21 on NK cells differ between species, with human IL21 enhancing NK cell proliferation and murine IL21 inhibiting NK cell proliferation. IL21 is a cytokine highly expressed by mouse T(H)17 cells.</p>
Gene ID:	60505
NCBI Accession:	<a href="#">NP_068554</a>
UniProt:	<a href="#">Q5SUE2</a>
Pathways:	<a href="#">JAK-STAT Signaling</a> , <a href="#">Regulation of Leukocyte Mediated Immunity</a> , <a href="#">Positive Regulation of Immune Effector Process</a> , <a href="#">Production of Molecular Mediator of Immune Response</a>

## Application Details

---

Application Notes:	Useful in Sandwich ELISA for Quantitative Detection of Antigen. Aliquot 0.1 mL per well of the 4000pg/mL, 2000pg/mL, 1000pg/mL, 500pg/mL, 250pg/mL, 125pg/mL, 62.5pg/mL mouse IL-21 standard solutions into the precoated 96-well plate. Add 0.1 mL of the sample diluent buffer into the control well (Zero well). Add 0.1 mL of each properly diluted sample of mouse cell culture supernates or serum to each empty well. It is recommended that each mouse IL-21 standard solution and each sample be measured in duplicate.
--------------------	--

## Application Details

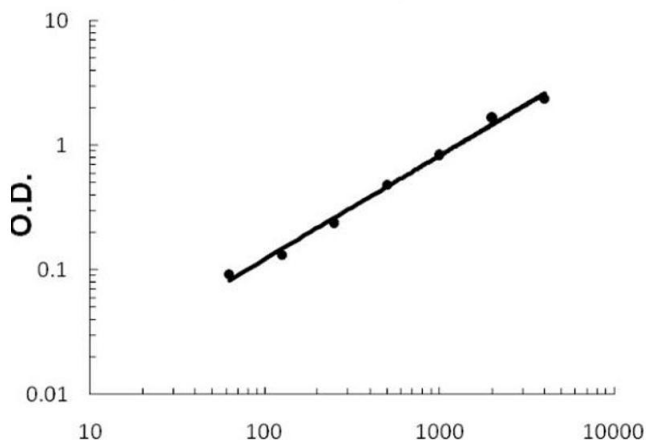
Comment:	Standard: Expression system for standard: E.coli, Immunogen sequence: P25-S146
Sample Volume:	100 µL
Plate:	Pre-coated
Restrictions:	For Research Use only

## Handling

Storage:	4 °C,-20 °C
Storage Comment:	Store vials at 4°C prior to opening. Centrifuge product if not completely clear after standing at room temperature. This product is stable for 6 months at 4°C as an undiluted liquid. Dilute only prior to immediate use. For extended storage freeze at -20°C or below for 12 months. Avoid cycles of freezing and thawing.
Expiry Date:	12 months

## Images

### Mouse IL-21 ELISA Kit



#### ELISA

**Image 1.** Mouse IL-21 Accusignal ELISA Kit Mouse IL-21 AccuSignal ELISA Kit standard curve. Assay Range: 62.5pg/ml-4000pg/ml. Sensitivity: <10pg/ml.