

Datasheet for ABIN6719944

**CTLA4 ELISA Kit**[Go to Product page](#)**1** Image

## Overview

Quantity:	1 kit
Target:	CTLA4
Reactivity:	Mouse
Method Type:	Sandwich ELISA
Detection Range:	156 pg/mL - 10000 pg/mL
Minimum Detection Limit:	156 pg/mL
Application:	ELISA

## Product Details

Purpose:	Mouse CTLA4 Sandwich ELISA Kit for Quantitative Detection
Brand:	AccuSignal™
Sample Type:	Cell Culture Supernatant, Plasma (heparin), Serum
Analytical Method:	Quantitative
Detection Method:	Colorimetric
Specificity:	Production: Natural and recombinant mouse CTLA4. There is no detectable cross-reactivity with other relevant proteins.
Sensitivity:	< 10 pg/mL
Components:	<ul style="list-style-type: none"><li>• Antibody-coated 96-well plate</li><li>• Target Protein Standard</li><li>• Detection antibody</li></ul>

## Product Details

---

- Detection reagent
- Diluent buffers
- Wash buffers
- Substrate Solution
- Stop solutions
- Adhesive covers

## Target Details

---

Target: CTLA4

Alternative Name: CTLA4 ([CTLA4 Products](#))

Background: Synonyms: Activation B7-1 antigen, B7, BB1, CD80, CD80\_HUMAN, CTLA-4 counter-receptor B7.1, T-lymphocyte activation antigen CD80

Background: CTLA-4(Cytotoxic T-Lymphocyte Antigen 4), also known as CD152(Cluster of differentiation 152), is a protein receptor that down regulates the immune system. CTLA4 is a member of the immunoglobulin superfamily, which is expressed on the surface of Helper T cells and transmits an inhibitory signal to T cells. CTLA4 is similar to the T-cell co-stimulatory protein, CD28, and both molecules bind to CD80 and CD86, also called B7-1 and B7-2 respectively, on antigen-presenting cells. CTLA4 transmits an inhibitory signal to T cells, whereas CD28 transmits a stimulatory signal. Blockade of CTLA4 expression in vitro augmented HIV-specific CD4-positive T-cell function.

Gene ID: 12477

NCBI Accession: [NP\\_033973](#)

UniProt: [P09793](#)

Pathways: [Cancer Immune Checkpoints](#)

## Application Details

---

Application Notes: Useful in Sandwich ELISA for Quantitative Detection of Antigen. Aliquot 0.1 mL per well of the 10000pg/mL, 5000pg/mL, 2500pg/mL, 1250pg/mL, 625pg/mL, 312pg/mL, 156pg/mL mouse CTLA4 standard solutions into the precoated 96-well plate. Add 0.1 mL of the sample diluent buffer into the control well (Zero well). Add 0.1 mL of each properly diluted sample of mouse cell culture supernates, serum or plasma(heparin) to each empty well. It is recommended that each mouse CTLA4 standard solution and each sample be measured in duplicate.

Comment: Standard: Expression system for standard: NSO, Immunogen sequence: A37-F162

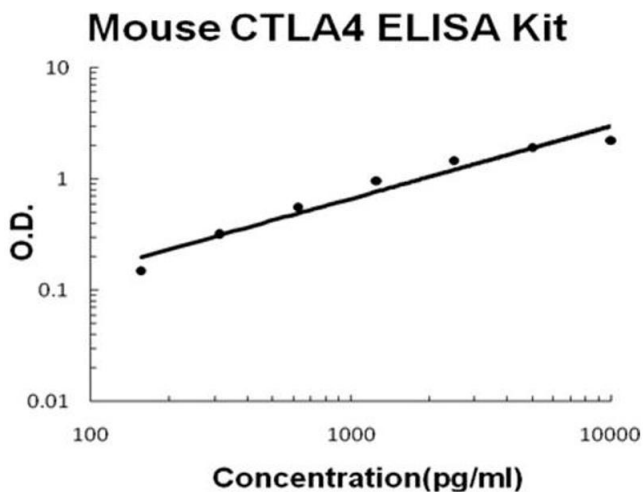
## Application Details

Sample Volume:	100 µL
Plate:	Pre-coated
Restrictions:	For Research Use only

## Handling

Storage:	4 °C,-20 °C
Storage Comment:	Store vials at 4°C prior to opening. Centrifuge product if not completely clear after standing at room temperature. This product is stable for 6 months at 4°C as an undiluted liquid. Dilute only prior to immediate use. For extended storage freeze at -20°C or below for 12 months. Avoid cycles of freezing and thawing.
Expiry Date:	12 months

## Images



### ELISA

**Image 1.** Mouse CTLA4 Accusignal ELISA Kit Mouse CTLA4 AccuSignal ELISA Kit standard curve. Assay Range: 156pg/ml-10000pg/ml. Sensitivity: <10pg/ml.